



UK Office

Everest Biotech Ltd

Cherwell Innovation Centre
77 Heyford Park
Upper Heyford
Oxfordshire
OX25 5HD
UK

Enquiries:

info@everestbiotech.com

Sales:

sales@everestbiotech.com

Tech support:

support@everestbiotech.com

Tel: +44 (0)1869 238326

Fax: +44 (0)1869 238327

US Office

Everest Biotech c/o Abcore

405 Maple Street, Suite A106
Ramona,
CA 92065
USA

Inquiries:

info@everestbiotech.com

Sales:

usasales@everestbiotech.com

Tech support:

support@everestbiotech.com

Tel: 888-320-4628 (toll-free)

Fax: 888-841-9041

www.everestbiotech.com

**Research Use Only. Not for
diagnostic or therapeutic use.**

EB06196 - Goat Anti-GIPC1 / NIP Antibody

Size: 100µg specific antibody in 200µl



Target Protein

Principal Names: GIPC1, NIP, GIPC PDZ domain containing family, member 1, C19orf3, GIPC, GLUT1CBP, Hs.6454, IIP-1, MGC15889, MGC3774, RGS19IP1, SEMCAP, SYNECTIN, TIP-2, GLUT1 C-terminal binding protein, IGF-1 receptor interacting protein 1, regulator of G-protein signalling 19 interacting protein 1, synectin, SYNECTIN

Official Symbol: GIPC1

Accession Number(s): NP_005707.1; NP_974197.1; NP_974199.1; NP_974196.1; NP_974198.1; NP_974223.1

Human GeneID(s): [10755](#)

Non-Human GeneID(s): 67903 (mouse), 83823 (rat)

Important Comments: This antibody is expected to recognize both isoform 1 (NP_005707.1, NP_974197.1 and NP_974199.1) and isoform 2 (NP_974196.1, NP_974198.1 and NP_974223.1).

Immunogen

Peptide with sequence C-GAIGDAKVGGRY, from the C Terminus of the protein sequence according to NP_005707.1; NP_974197.1; NP_974199.1; NP_974196.1; NP_974198.1; NP_974223.1.

Please note the [peptide](#) is available for sale.

Purification and Storage

Purified from goat serum by ammonium sulphate precipitation followed by antigen affinity chromatography using the immunizing peptide.

Supplied at 0.5 mg/ml in Tris saline, 0.02% sodium azide, pH7.3 with 0.5% bovine serum albumin.

Aliquot and store at -20°C. Minimize freezing and thawing.

Applications Tested

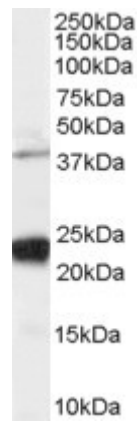
Peptide ELISA: antibody detection limit dilution 1:128000.

Western blot: Approx 38kDa and strong 23-24kDa bands observed in lysates of cell line HeLa, and approx 24kDa also observed in Human Pancreas, Kidney and Muscle lysates (calculated MW of 36.0kDa according to NP_005707.1, NP_974197.1 and NP_974199.1 and 26.1kDa according to NP_974198.1 and NP_974223.1). In transfected HEK293 transiently expressing GIPC1 isoform 1 a band of approx. 40kDa is observed. This band is not observed in the non-transfected HEK293. Recommended concentration: 0.03-0.1µg/ml.

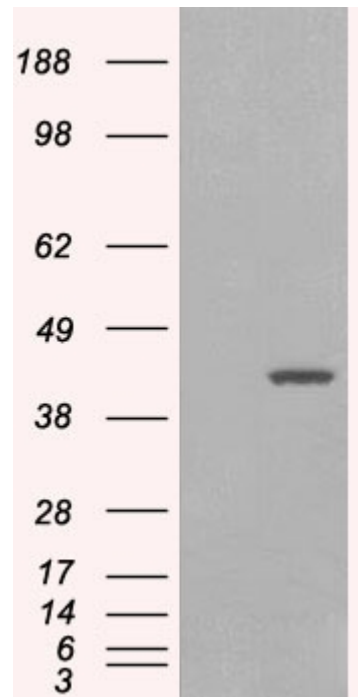
Species Reactivity

Tested: Human

Expected from sequence similarity: Human, Mouse, Rat, Cow



EB06196 staining (0.03 μ g/ml) of Human HeLa cell lysate (RIPA buffer, 35 μ g total protein per lane). Primary incubated for 1 hour. Detected by chemiluminescence.



HEK293 overexpressing GIPC1 isoform 1 (RC216466) and probed with EB06196 (mock transfection in first lane), tested by Origene.