



## UK Office

### Everest Biotech Ltd

Cherwell Innovation Centre  
77 Heyford Park  
Upper Heyford  
Oxfordshire  
OX25 5HD  
UK

Enquiries:

[info@everestbiotech.com](mailto:info@everestbiotech.com)

Sales:

[sales@everestbiotech.com](mailto:sales@everestbiotech.com)

Tech support:

[support@everestbiotech.com](mailto:support@everestbiotech.com)

Tel: +44 (0)1869 238326

Fax: +44 (0)1869 238327

## US Office

### Everest Biotech c/o Abcore

405 Maple Street, Suite A106  
Ramona,  
CA 92065  
USA

Inquiries:

[info@everestbiotech.com](mailto:info@everestbiotech.com)

Sales:

[usasales@everestbiotech.com](mailto:usasales@everestbiotech.com)

Tech support:

[support@everestbiotech.com](mailto:support@everestbiotech.com)

Tel: 888-320-4628 (toll-free)

Fax: 888-841-9041

[www.everestbiotech.com](http://www.everestbiotech.com)

**Research Use Only. Not for  
diagnostic or therapeutic use.**

## EB08036 - Goat Anti-GIRK2 / KCNJ6 Antibody

Size: 100µg specific antibody in 200µl



### Target Protein

**Principal Names:** KCNJ6, GIRK2, potassium inwardly-rectifying channel, subfamily J, member 6, BIR1, KATP2, KCNJ7, KIR3.2, MGC126596, hiGIRK2, G protein-activated inward rectifier potassium channel 2, inward rectifier potassium channel KIR3.2, potassium inwardly-

**Official Symbol:** KCNJ6

**Accession Number(s):** NP\_002231.1

**Human GeneID(s):** [3763](#)

**Non-Human GeneID(s):** 16522 (mouse), 25743 (rat)

### Immunogen

Peptide with sequence C-SSKLNQHAELET, from the C Terminus of the protein sequence according to NP\_002231.1.

Please note the [peptide](#) is available for sale.

### Purification and Storage

Purified from goat serum by ammonium sulphate precipitation followed by antigen affinity chromatography using the immunizing peptide.

Supplied at 0.5 mg/ml in Tris saline, 0.02% sodium azide, pH7.3 with 0.5% bovine serum albumin.

Aliquot and store at -20°C. Minimize freezing and thawing.

### Applications Tested

**Peptide ELISA:** antibody detection limit dilution 1:32000.

**Western blot:** Approx 48kDa band observed in Human Brain (Hippocampus and Substantia Nigra) lysates (calculated MW of 48.5kDa according to NP\_002231.1). Recommended concentration: 2-6µg/ml. Primary incubation was 1 hour.

**Immunocytochemistry:** This antibody has been successfully used in ICC on Human, ChemRxiv. Cambridge: Cambridge Open Engage; 2023.

### Species Reactivity

**Tested:** Human

**Expected from sequence similarity:** Human, Mouse, Rat

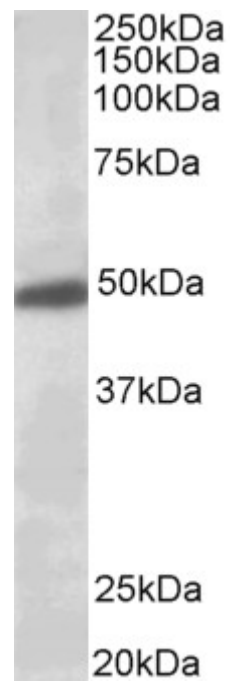
### Specific Reference

**This antibody has been successfully used in ICC on Human:**

Andrei Kochegarov, Yaodong Huang, Goutam Biswas, Noboru Sato and Michael Pirrung  
Differentiation of Human Pluripotent Cell-derived Neural Rosettes to Dopaminergic Neurons by Small Molecules

ChemRxiv. Cambridge: Cambridge Open Engage; 2023

PMID: 0



EB08036 (0.5µg/ml) staining of Human Brain (Substantia Nigra) lysate (35µg protein in RIPA buffer). Detected by chemiluminescence.