



## International Office

### Everest Biotech Ltd

Vector Laboratories, Inc.  
6737 Mowry Ave  
Newark, CA 94560  
United States

Customer Service:

[customerservice@vectorlabs.com](mailto:customerservice@vectorlabs.com)

Technical Service:

[technical@vectorlabs.com](mailto:technical@vectorlabs.com)

Tel: +1 (800) 227-6666

[www.everestbiotech.com](http://www.everestbiotech.com)

**Research Use Only. Not for  
diagnostic or therapeutic use.**

## EB07536 - Goat Anti-GJB2 / Connexin 26 Antibody

Size: 100µg specific antibody in 200µl



### Target Protein

**Principal Names:** GJB2, Connexin 26, gap junction protein, beta 2, 26kDa (connexin 26), CX26, DFNA3, DFNB1, HID, KID, NSRD1, PPK, gap junction protein beta 2, gap junction protein, beta 2, 26kD (connexin 26)

**Official Symbol:** GJB2

**Accession Number(s):** NP\_003995.2

**Human GeneID(s):** [2706](#)

**Non-Human GeneID(s):** 14619 (mouse), 394266 (rat)

### Immunogen

Peptide with sequence YLLIRYCSGKSKKP, from the C Terminus of the protein sequence according to NP\_003995.2.

Please note the [peptide](#) is available for sale.

### Purification and Storage

Purified from goat serum by ammonium sulphate precipitation followed by antigen affinity chromatography using the immunizing peptide.

Supplied at 0.5 mg/ml in Tris saline, 0.02% sodium azide, pH7.3 with 0.5% bovine serum albumin.

Aliquot and store at -20°C. Minimize freezing and thawing.

### Applications Tested

**Peptide ELISA:** antibody detection limit dilution 1:128000.

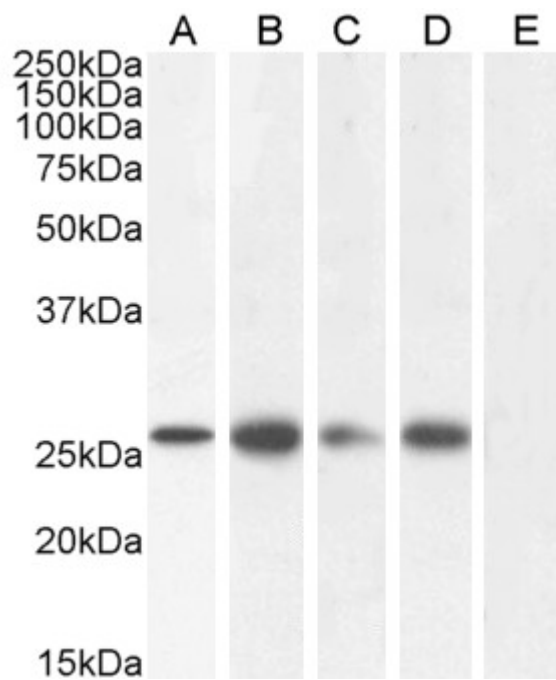
**Western blot:** Approx 25-26kDa band observed in Human Colon, Prostate and Skin , Mouse Brain and in Mouse and Rat Heart lysates (calculated MW of 26.2kDa according to Human NP\_003995.2 and 26.4kDa according to Mouse NP\_032151.1 and Rat NP\_001004099.1 ) Recommended concentration: 0.01-1µg/ml. Primary incubation 1 hour at room temperature. **Negative Control:** Human Adipose tissue lysate.

**Flow Cytometry:** Flow cytometric analysis of HepG2 cells. Recommended concentration: 10ug/ml.

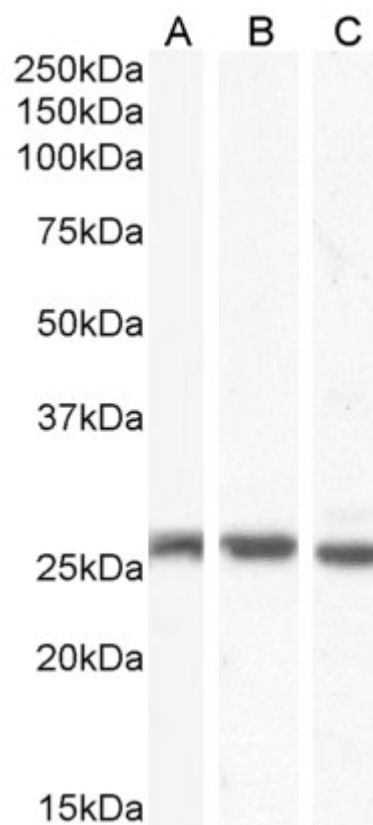
### Species Reactivity

**Tested:** Human, Mouse, Rat

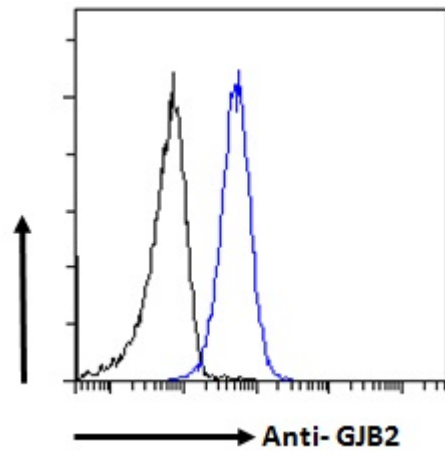
**Expected from sequence similarity:** Human, Mouse, Rat, Dog



EB07536 (1 $\mu$ g/ml) staining of Human Colon (A), Heart (B), Prostate (C), Skin (D) and negative control Adipose (E) lysate (35 $\mu$ g protein in RIPA buffer). Detected by chemiluminescence.



EB07536 (0.01 $\mu$ g/ml) staining of Mouse Brain (A), (0.5 $\mu$ g/ml) Mouse Heart (B) and Rat Heart (C) lysate (35 $\mu$ g protein in RIPA buffer). Detected by chemiluminescence.



EB07536 Flow cytometric analysis of paraformaldehyde fixed HepG2 cells (blue line), permeabilized with 0.5% Triton. Primary incubation 1hr (10ug/ml) followed by Alexa Fluor 488 secondary antibody (1ug/ml). IgG control: Unimmunized goat IgG (black line) followed by Alexa Fluor 488 secondary antibody.