



UK Office

Everest Biotech Ltd

Cherwell Innovation Centre
77 Heyford Park
Upper Heyford
Oxfordshire
OX25 5HD
UK

Enquiries:

info@everestbiotech.com

Sales:

sales@everestbiotech.com

Tech support:

support@everestbiotech.com

Tel: +44 (0)1869 238326

www.everestbiotech.com

**Research Use Only. Not for
diagnostic or therapeutic use.**

EB07027 - Goat Anti-GLI1 Antibody

Size: 100µg specific antibody in 200µl



Target Protein

Principal Names: GLI1, glioma-associated oncogene homolog 1 (zinc finger protein), HGNC:4317, GLI, glioma-associated oncogene homolog (zinc finger protein), glioma-associated oncogene homolog 1, Tax Helper Protein, GLI family zinc finger 1, glioma-associated oncogene family zinc finger 1, glioma-associated oncogene homolog 1 (zinc finger protein)

Official Symbol: GLI1

Accession Number(s): NP_005260.1; NP_001153517.1; NP_001161081.1

Human GeneID(s): [2735](#)

Immunogen

Peptide with sequence C-EDAPAQEPSYQSPK, from the internal region of the protein sequence according to NP_005260.1; NP_001153517.1; NP_001161081.1.

Please note the [peptide](#) is available for sale.

Purification and Storage

Purified from goat serum by ammonium sulphate precipitation followed by antigen affinity chromatography using the immunizing peptide.

Supplied at 0.5 mg/ml in Tris saline, 0.02% sodium azide, pH7.3 with 0.5% bovine serum albumin.

Aliquot and store at -20°C. Minimize freezing and thawing.

Applications Tested

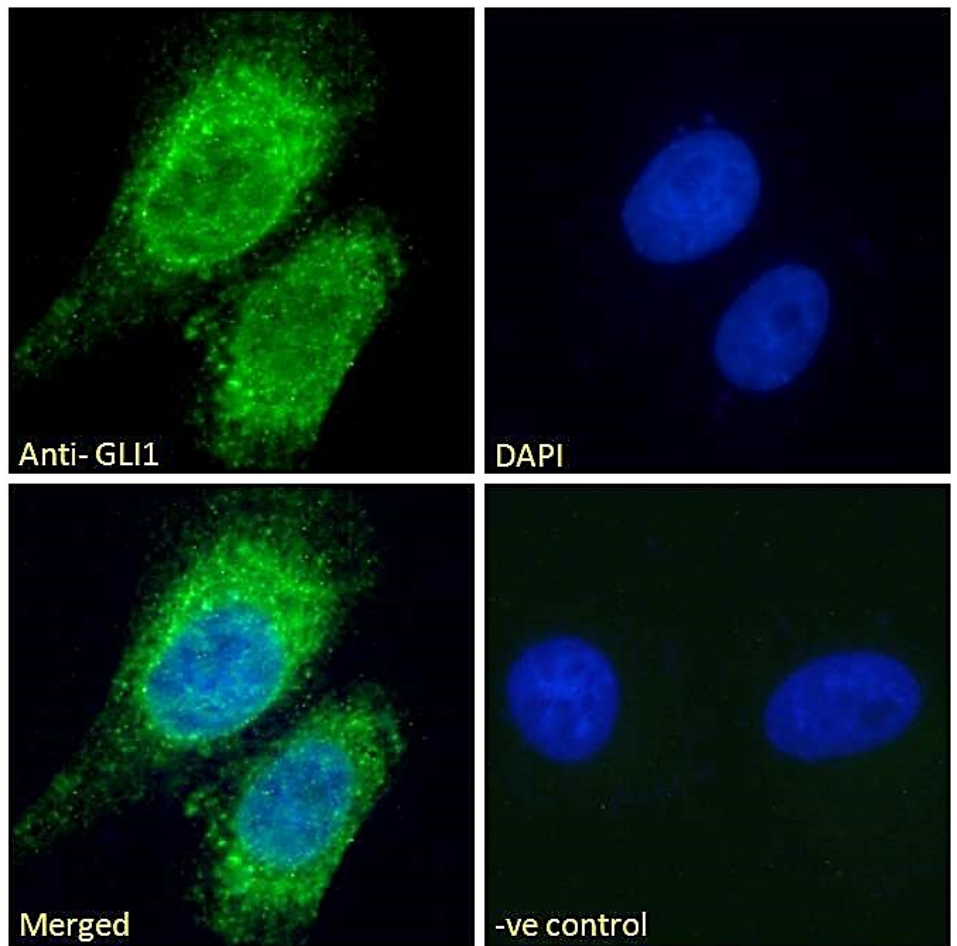
Peptide ELISA: antibody detection limit dilution 1:8000.

Immunofluorescence: Strong expression of the protein seen in the cytoplasm and nuclei of U2OS cells. Recommended concentration: 10µg/ml.

Species Reactivity

Tested: Human

Expected from sequence similarity: Human



EB07027 Immunofluorescence analysis of paraformaldehyde fixed U2OS cells, permeabilized with 0.15% Triton. Primary incubation 1hr (10ug/ml) followed by Alexa Fluor 488 secondary antibody (2ug/ml), showing nuclear and cytoplasmic staining. The nuclear stain is DAPI (blue). Negative control: Unimmunized goat IgG (10ug/ml) followed by Alexa Fluor 488 secondary antibody (2ug/ml).