



## International Office

### Everest Biotech Ltd

Vector Laboratories, Inc.  
6737 Mowry Ave  
Newark, CA 94560  
United States

Customer Service:

[customerservice@vectorlabs.com](mailto:customerservice@vectorlabs.com)

Technical Service:

[technical@vectorlabs.com](mailto:technical@vectorlabs.com)

Tel: +1 (800) 227-6666

[www.everestbiotech.com](http://www.everestbiotech.com)

**Research Use Only. Not for  
diagnostic or therapeutic use.**

## EB07136 - Goat Anti-GLI2 Antibody

Size: 100µg specific antibody in 200µl



### Target Protein

**Principal Names:** GLI2, GLI-Kruppel family member GLI2, THP2, oncogene GLI2, tax helper protein 2, tax-responsive element-2 holding protein, tax-responsive element-25-bp sequence binding protein, zinc finger protein GLI2

**Official Symbol:** GLI2

**Accession Number(s):** NP\_005261.2

**Human GeneID(s):** [2736](#)

**Important Comments:** This antibody is expected to recognise all four reported isoforms (NP\_084655.1, NP\_084656.1, NP\_084657.1 and NP\_005261.1)

### Immunogen

Peptide with sequence DLKEDLDRDDCKQE, from the internal region of the protein sequence according to NP\_005261.2.

Please note the [peptide](#) is available for sale.

### Purification and Storage

Purified from goat serum by ammonium sulphate precipitation followed by antigen affinity chromatography using the immunizing peptide.

Supplied at 0.5 mg/ml in Tris saline, 0.02% sodium azide, pH7.3 with 0.5% bovine serum albumin.

Aliquot and store at -20°C. Minimize freezing and thawing.

### Applications Tested

**Peptide ELISA:** antibody detection limit dilution 1:2000.

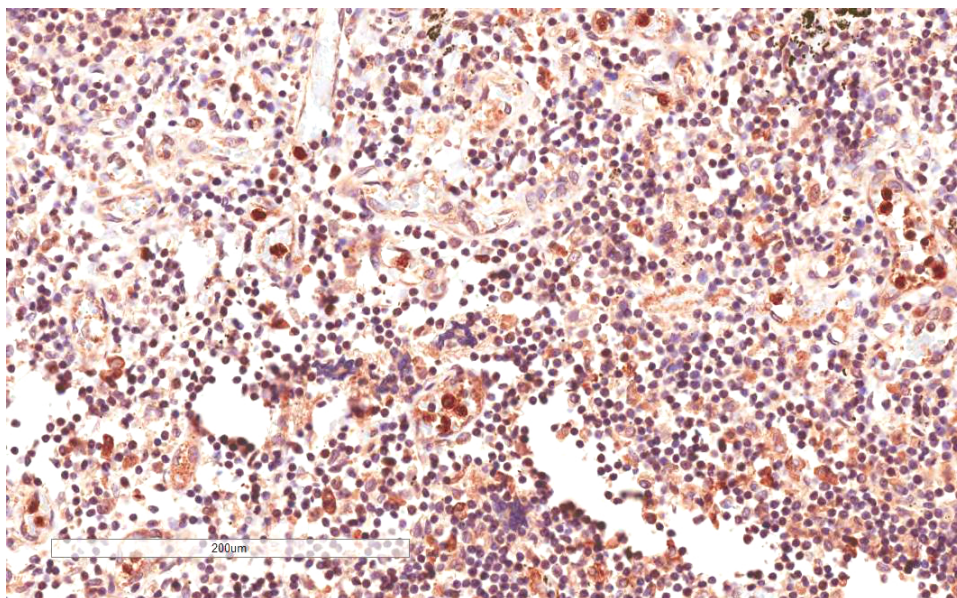
**Western blot:** Preliminary experiments gave an approx 55kDa band in Human Bone Marrow and Ovary lysates after 1µg/ml antibody staining. Please note that currently we cannot find an explanation in the literature for the band we observe given the calculated size of 168kDa according to NP\_005261.2. The 55kDa band was successfully blocked by incubation with the immunizing peptide.

**IHC:** In paraffin embedded Human Lymph Node shows nuclear staining in macrophages. Recommended concentration: 4-6µg/ml.

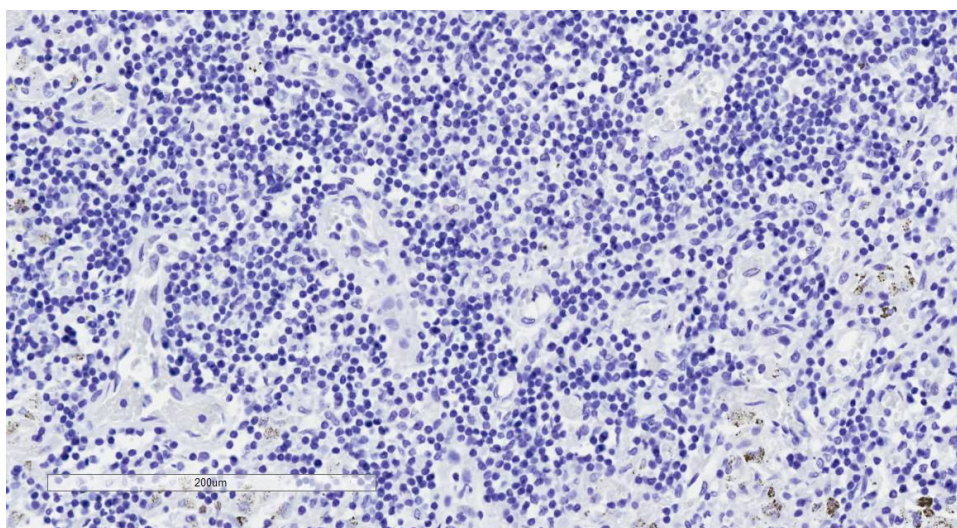
### Species Reactivity

**Tested:** Human

**Expected from sequence similarity:** Human, Mouse



EB07136 (4µg/ml) staining of paraffin embedded Human Lymph Node. Microwaved antigen retrieval with citrate buffer pH 6, HRP-staining.



EB07136 Negative Control showing staining of paraffin embedded Human Lymph Node, with no primary antibody.