



International Office

Everest Biotech Ltd

Vector Laboratories, Inc.
6737 Mowry Ave
Newark, CA 94560
United States

Customer Service:

customerservice@vectorlabs.com

Technical Service:

technical@vectorlabs.com

Tel: +1 (800) 227-6666

www.everestbiotech.com

**Research Use Only. Not for
diagnostic or therapeutic use.**

EB11676 - Goat Anti-GLP1R Antibody

Size: 100µg specific antibody in 200µl



Target Protein

Principal Names: GLP-1 receptor, Glp1r, GLP-1R, GLP-1-R, GLP1Rc, glucagon-like peptide 1 receptor

Official Symbol: GLP1R

Accession Number(s): NP_002053.3

Human GeneID(s): [2740](#)

Non-Human GeneID(s): 14652 (mouse), 25051 (rat)

Important Comments: The immunizing peptide represents part of an extracellular region.

Immunogen

Peptide with sequence C-QHQWDGLLSYQD, from the internal region of the protein sequence according to NP_002053.3.

Please note the [peptide](#) is available for sale.

Purification and Storage

Purified from goat serum by ammonium sulphate precipitation followed by antigen affinity chromatography using the immunizing peptide.

Supplied at 0.5 mg/ml in Tris saline, 0.02% sodium azide, pH7.3 with 0.5% bovine serum albumin.

Aliquot and store at -20°C. Minimize freezing and thawing.

Applications Tested

Peptide ELISA: antibody detection limit dilution 1:128000.

Western blot: Approx 55kDa band observed in Human Hippocampus and in Rat and Pig Brain lysates (calculated MW of 53.0kDa according to Human NP_002053.3, 52.9kDa according to Rat NP_036860.1 and 52.7kDa according to Pig NP_001243523.1).

Recommended concentration: 0.1-1µg/ml. Primary incubation 1 hour at room temperature.

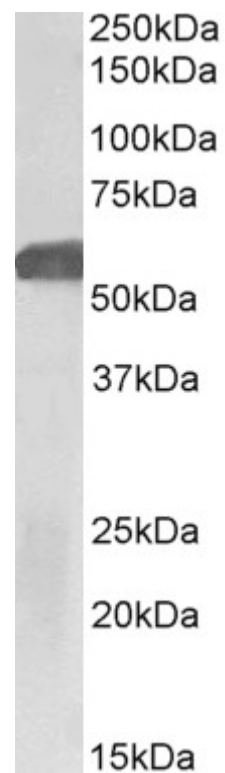
Immunofluorescence: Strong expression of the protein seen in the membranes of HeLa cells. Recommended concentration: 10µg/ml.

Flow Cytometry: Flow cytometric analysis of HeLa cells. Recommended concentration: 10ug/ml.

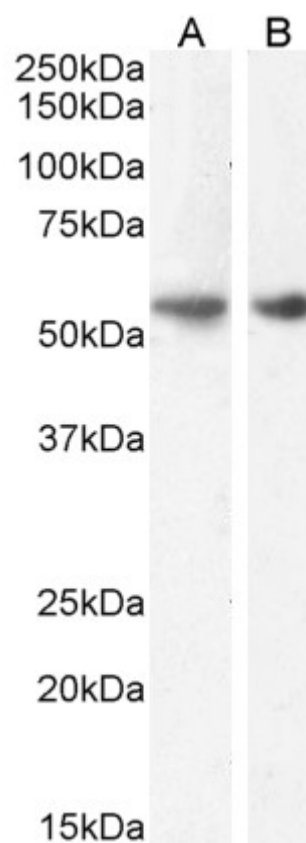
Species Reactivity

Tested: Human, Rat, Pig

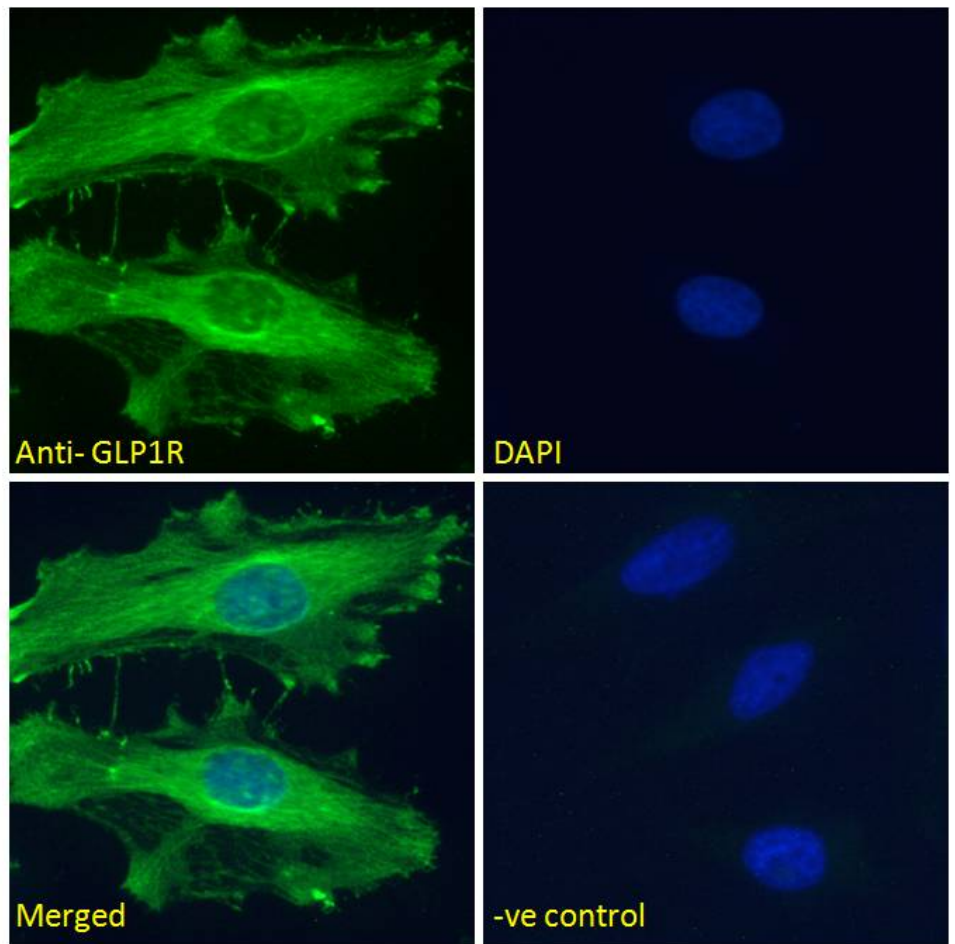
Expected from sequence similarity: Human, Mouse, Rat, Dog, Pig, Cow



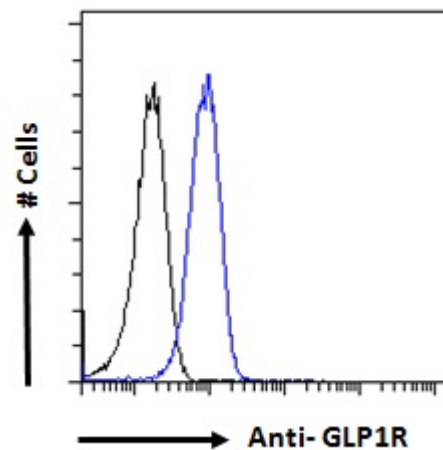
EB11676 (1 μ g/ml) staining of Human Hippocampus lysate (35 μ g protein in RIPA buffer). Detected by chemiluminescence.



EB11676 (1 μ g/ml) staining of Rat (A) and (0.1 μ g/ml) Pig (B) Brain lysate (35 μ g protein in RIPA buffer). Detected by chemiluminescence.



EB11676 Immunofluorescence analysis of paraformaldehyde fixed HeLa cells, permeabilized with 0.15% Triton. Primary incubation 1hr (10ug/ml) followed by Alexa Fluor 488 secondary antibody (2ug/ml), showing membrane staining. The nuclear stain is DAPI (blue). Negative control: Unimmunized goat IgG (10ug/ml) followed by Alexa Fluor 488 secondary antibody (2ug/ml).



EB11676 Flow cytometric analysis of paraformaldehyde fixed HeLa cells (blue line), permeabilized with 0.5% Triton. Primary incubation 1hr (10ug/ml) followed by Alexa Fluor 488 secondary antibody (1ug/ml). IgG control: Unimmunized goat IgG (black line) followed by Alexa Fluor 488 secondary antibody.