



International Office

Everest Biotech Ltd

Vector Laboratories, Inc.
6737 Mowry Ave
Newark, CA 94560
United States

Customer Service:

customerservice@vectorlabs.com

Technical Service:

technical@vectorlabs.com

Tel: +1 (800) 227-6666

www.everestbiotech.com

**Research Use Only. Not for
diagnostic or therapeutic use.**

EB09482 - Goat Anti-GLUT5 / SLC2A5 Antibody

Size: 100µg specific antibody in 200µl



Target Protein

Principal Names: SLC2A5, solute carrier family 2 (facilitated glucose/fructose transporter), member 5, GLUT5, OTTHUMP00000001704, glucose transporter-like protein 5, solute carrier family 2 (facilitated glucose transporter), member 5

Official Symbol: SLC2A5

Accession Number(s): NP_003030.1

Human GeneID(s): [6518](#)

Immunogen

Peptide with sequence C-SEVYPEKEELKE, from the C Terminus of the protein sequence according to NP_003030.1.

Please note the [peptide](#) is available for sale.

Purification and Storage

Purified from goat serum by ammonium sulphate precipitation followed by antigen affinity chromatography using the immunizing peptide.

Supplied at 0.5 mg/ml in Tris saline, 0.02% sodium azide, pH7.3 with 0.5% bovine serum albumin.

Aliquot and store at -20°C. Minimize freezing and thawing.

Applications Tested

Peptide ELISA: antibody detection limit dilution 1:8000.

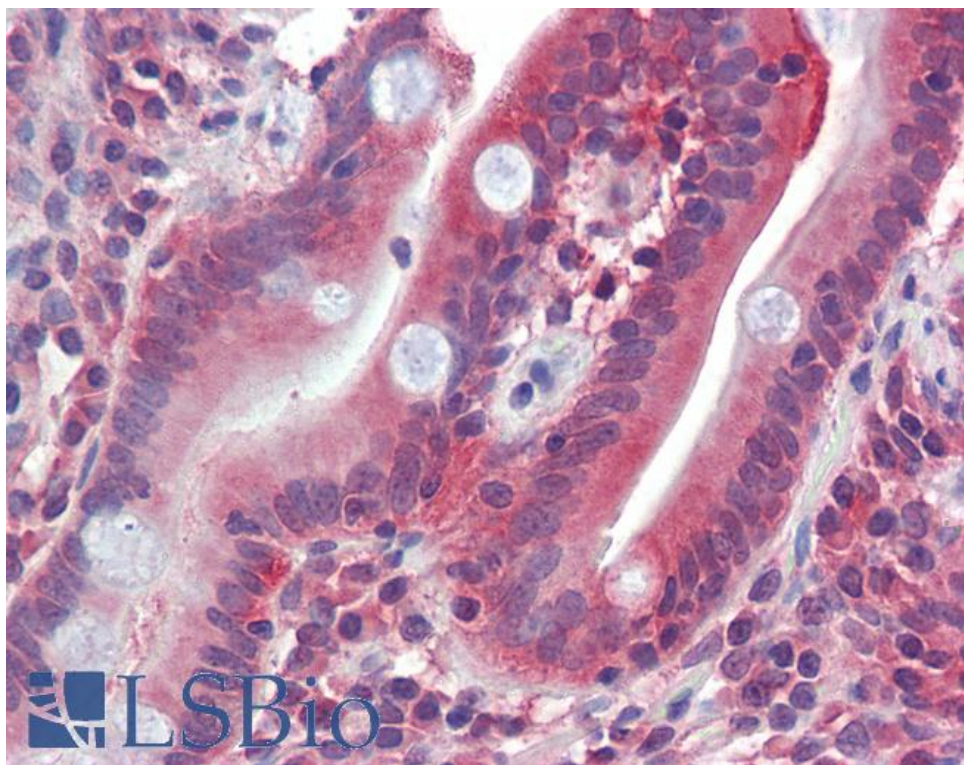
Western blot: Preliminary experiments gave an approx 38kDa band in Human Duodenum, Kidney and Skeletal Muscle lysates after 1µg/ml antibody staining. Please note that currently we cannot find an explanation in the literature for the band we observe given the calculated size of 55.0kDa according to NP_003030.1. The 38kDa band was successfully blocked by incubation with the immunizing peptide.

IHC: Paraffin embedded Human Small Intestine. Recommended concentration: 2.5µg/ml.

Species Reactivity

Tested: Human

Expected from sequence similarity: Human



EB09482 (2.5µg/ml) staining of paraffin embedded Human Small Intestine. Steamed antigen retrieval with citrate buffer pH 6, AP-staining.