



## International Office

### Everest Biotech Ltd

Vector Laboratories, Inc.  
6737 Mowry Ave  
Newark, CA 94560  
United States

Customer Service:

[customerservice@vectorlabs.com](mailto:customerservice@vectorlabs.com)

Technical Service:

[technical@vectorlabs.com](mailto:technical@vectorlabs.com)

Tel: +1 (800) 227-6666

[www.everestbiotech.com](http://www.everestbiotech.com)

**Research Use Only. Not for  
diagnostic or therapeutic use.**

## EB09856 - Goat Anti-Glutamate Dehydrogenase Antibody

Size: 100µg specific antibody in 200µl



### Target Protein

**Principal Names:** GDH, GDH1, GLUD, glutamate dehydrogenase 1, MGC132003, GLUD1

**Official Symbol:** GLUD1 / GLUD2

**Accession Number(s):** NP\_005262.1; NP\_036216.2

**Human GeneID(s):** [2746](#), [2747](#)

**Non-Human GeneID(s):** 14661 (mouse), 24399 (rat)

**Important Comments:** This antibody is expected to recognize both reported isoforms (NP\_005262.1; NP\_036216.2).

### Immunogen

Peptide with sequence C-ESEEQKRNVRGILR, from the internal region of the protein sequence according to NP\_005262.1; NP\_036216.2.

Please note the [peptide](#) is available for sale.

### Purification and Storage

Purified from goat serum by ammonium sulphate precipitation followed by antigen affinity chromatography using the immunizing peptide.

Supplied at 0.5 mg/ml in Tris saline, 0.02% sodium azide, pH7.3 with 0.5% bovine serum albumin.

Aliquot and store at -20°C. Minimize freezing and thawing.

### Applications Tested

**Peptide ELISA:** antibody detection limit dilution 1:32000.

**Western blot:** Approx 55kDa band observed in Human Brain (Cerebellum) and Mouse Brain lysates and in Human, Mouse and Rat Liver lysates (calculated MW of 61.4kDa according to Human NP\_005262.1, of 61.3kDa according to Mouse NP\_032159.1 and of 61.4kDa according to Rat NP\_036702.1). Recommended concentration: 0.3-1µg/ml. Primary incubation was 1 hour.

**IHC:** In paraffin embedded Human Cerebral Cortex shows mitochondrial staining in neuronal cell bodies and axons. Recommended concentration: 3-5µg/ml.

**Immunofluorescence:** Customer found particulate cytoplasm staining in HeLa.

**Additional validation:** This antibody has been successfully used in the following paper: Sikorski et al. (2018) PMID: 30377371.

### Species Reactivity

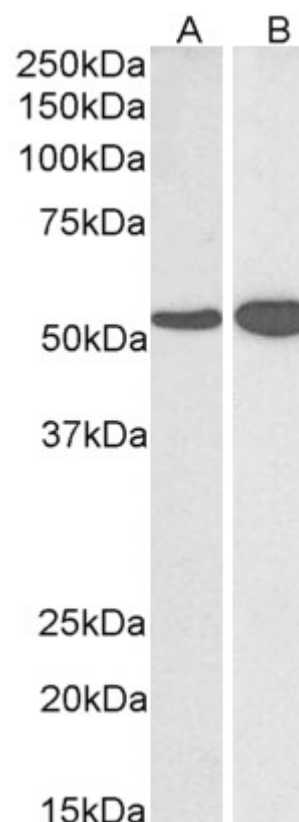
**Tested:** Human, Mouse, Rat

**Expected from sequence similarity:** Human, Mouse, Rat, Dog, Cow

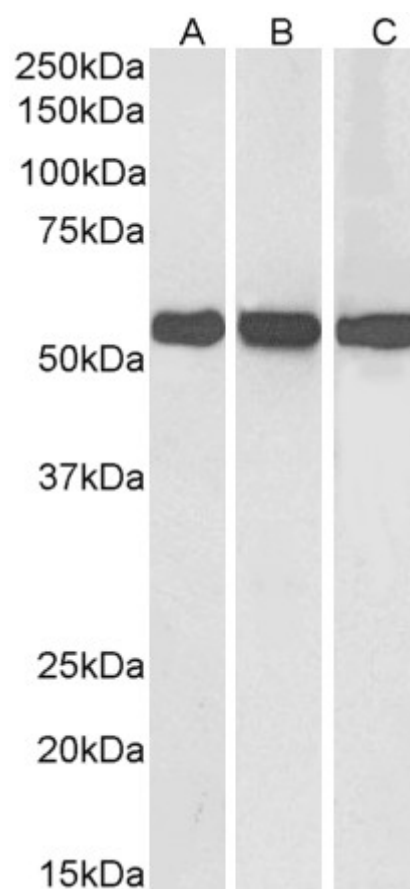
### Specific Reference

**This antibody has been successfully used in the following paper:**

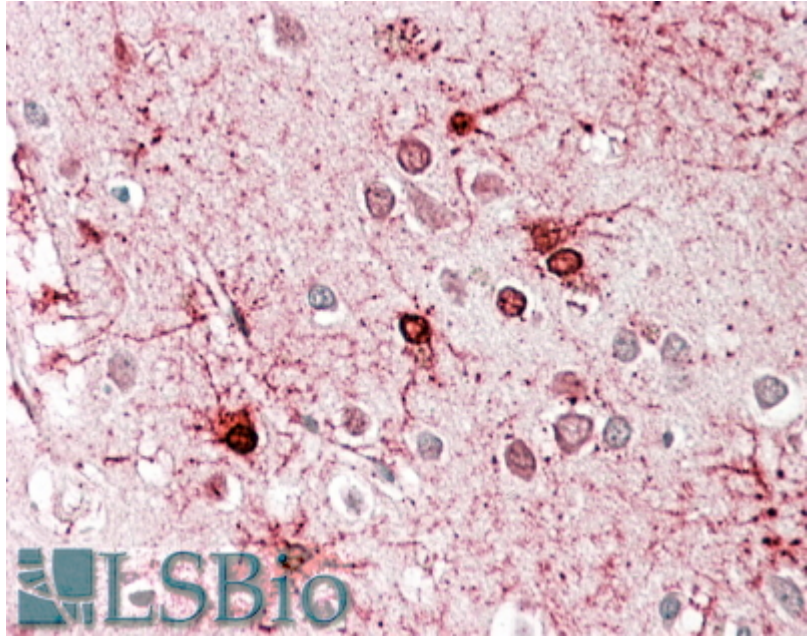
Krzysztof Sikorski, Adi Mehta, Marit Inngjerdengen, Flourina Thakor, Simon Kling, Tomas Kalina, Tuula A. Nyman, Maria Ekman Stensland, Wei Zhou, Gustavo A. De Souza, Lars Holden, Jan Stuchly, Markus Templin and Fridtjof Lund-Johansen  
A high-throughput pipeline for validation of antibodies  
Nat Methods. 2018 Nov;15(11):909-912  
PMID: 30377371



EB09856 (0.03 $\mu$ g/ml) staining of Human (A) and Mouse (B) Brain lysate (35 $\mu$ g protein in RIPA buffer). Detected by chemiluminescence.



EB09856 (0.01 $\mu$ g/ml) staining of Human (A), Mouse (B) and Rat (C) Liver lysate (35 $\mu$ g protein in RIPA buffer). Detected by chemiluminescence.



EB09856 (3.75µg/ml) staining of paraffin embedded Human Cerebral Cortex. Steamed antigen retrieval with citrate buffer pH 6, AP-staining.