



## International Office

### Everest Biotech Ltd

Vector Laboratories, Inc.  
6737 Mowry Ave  
Newark, CA 94560  
United States

Customer Service:

[customerservice@vectorlabs.com](mailto:customerservice@vectorlabs.com)

Technical Service:

[technical@vectorlabs.com](mailto:technical@vectorlabs.com)

Tel: +1 (800) 227-6666

[www.everestbiotech.com](http://www.everestbiotech.com)

**Research Use Only. Not for  
diagnostic or therapeutic use.**

## EB07283-T - Goat Anti-Glutathione Peroxidase 1 (isoform1) Antibody - Trial

Size: 20µg specific antibody in 40µl



### Target Protein

**Principal Names:** glutathione peroxidase 1, HGNC:4553, GPX1, GSHPX1, MGC14399, MGC88245

**Official Symbol:** GPX1

**Accession Number(s):** NP\_000572.2

**Human GeneID(s):** [2876](#)

**Important Comments:** This antibody is expected to recognise isoform 1 ( NP\_000572.2) only.

### Immunogen

Peptide with sequence C-REALPAPSDDATA, from the internal region of the protein sequence according to NP\_000572.2.

Please note the [peptide](#) is available for sale.

### Purification and Storage

Purified from goat serum by ammonium sulphate precipitation followed by antigen affinity chromatography using the immunizing peptide.

Supplied at 0.5 mg/ml in Tris saline, 0.02% sodium azide, pH7.3 with 0.5% bovine serum albumin.

Aliquot and store at -20°C. Minimize freezing and thawing.

### Applications Tested

**Peptide ELISA:** antibody detection limit dilution 1:32000.

**Western blot:** Approx 22kDa band observed in Human Liver lysates (calculated MW of 22.1kDa according to NP\_000572.2). Recommended concentration: 1-3µg/ml.

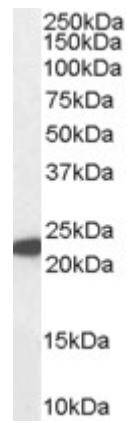
**IHC:** In paraffin embedded Human Cerebral Cortex shows staining of microglia.

Recommended concentration: 3-5µg/ml. Paraffin embedded Human Liver. Recommended concentration: 3.75µg/ml. Frozen sections of Porcin Kidney shows staining of cytoplasm in PCT epithelial cells. Recommended concentration: 20µg/ml.

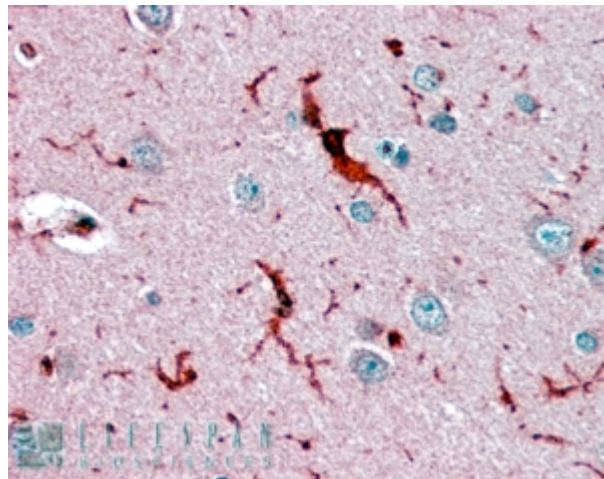
### Species Reactivity

**Tested:** Human, Pig

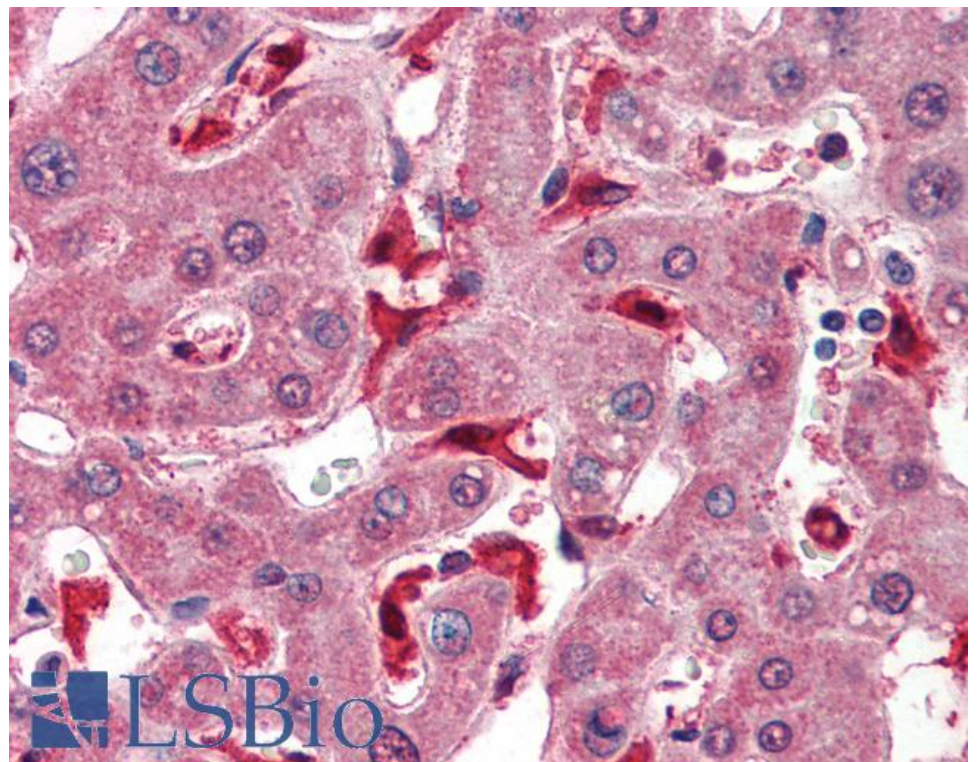
**Expected from sequence similarity:** Human



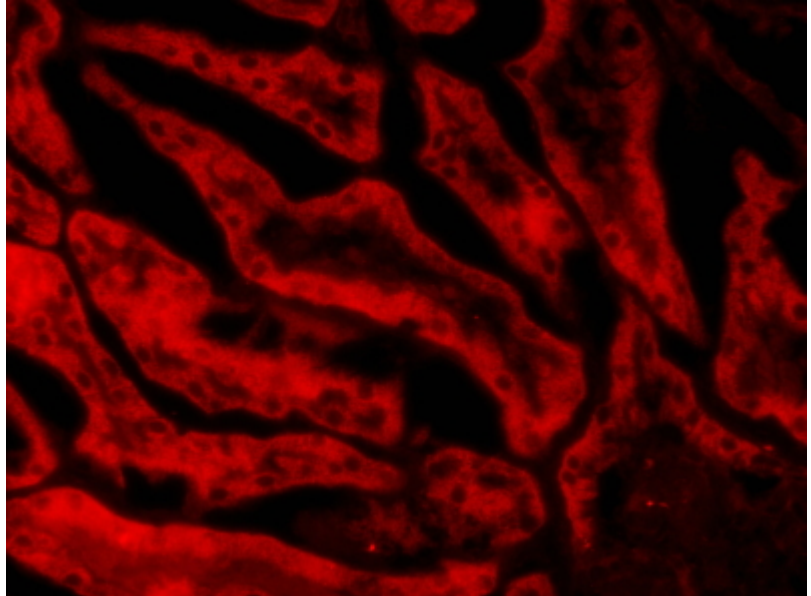
EB07283 (1 $\mu$ g/ml) staining of Human Liver lysate (35 $\mu$ g protein in RIPA buffer). Primary incubation was 1 hour.  
Detected by chemiluminescence.



EB07283 (3.8 $\mu$ g/ml) staining of paraffin embedded Human Cerebral Cortex. Steamed antigen retrieval with citrate buffer pH 6, AP-staining.



EB07283 (3.75µg/ml) staining of paraffin embedded Human Liver. Steamed antigen retrieval with citrate buffer pH 6, AP-staining.



EB07283 (20µg/ml) staining of PFA-perfused cryosection of Porcin Kidney. Microwave antigen retrieval with citrate buffer pH 3, CY3-staining. Data obtained from Dr. Hrvoje Brzica, University of Zagreb, Croatia