



## UK Office

### Everest Biotech Ltd

Cherwell Innovation Centre  
77 Heyford Park  
Upper Heyford  
Oxfordshire  
OX25 5HD  
UK

Enquiries:

[info@everestbiotech.com](mailto:info@everestbiotech.com)

Sales:

[sales@everestbiotech.com](mailto:sales@everestbiotech.com)

Tech support:

[support@everestbiotech.com](mailto:support@everestbiotech.com)

Tel: +44 (0)1869 238326

Fax: +44 (0)1869 238327

## US Office

### Everest Biotech c/o Abcore

405 Maple Street, Suite A106  
Ramona,  
CA 92065  
USA

Inquiries:

[info@everestbiotech.com](mailto:info@everestbiotech.com)

Sales:

[usasales@everestbiotech.com](mailto:usasales@everestbiotech.com)

Tech support:

[support@everestbiotech.com](mailto:support@everestbiotech.com)

Tel: 888-320-4628 (toll-free)

Fax: 888-841-9041

[www.everestbiotech.com](http://www.everestbiotech.com)

**Research Use Only. Not for  
diagnostic or therapeutic use.**

## EB07283-T - Goat Anti-Glutathione Peroxidase 1 (isoform1) Antibody - Trial

Size: 20µg specific antibody in 40µl



### Target Protein

**Principal Names:** glutathione peroxidase 1, HGNC:4553, GPX1, GSHPX1, MGC14399, MGC88245

**Official Symbol:** GPX1

**Accession Number(s):** NP\_000572.2

**Human GeneID(s):** [2876](#)

**Important Comments:** This antibody is expected to recognise isoform 1 ( NP\_000572.2) only.

### Immunogen

Peptide with sequence C-REALPAPSDDATA, from the internal region of the protein sequence according to NP\_000572.2.

Please note the [peptide](#) is available for sale.

### Purification and Storage

Purified from goat serum by ammonium sulphate precipitation followed by antigen affinity chromatography using the immunizing peptide.

Supplied at 0.5 mg/ml in Tris saline, 0.02% sodium azide, pH7.3 with 0.5% bovine serum albumin.

Aliquot and store at -20°C. Minimize freezing and thawing.

### Applications Tested

**Peptide ELISA:** antibody detection limit dilution 1:32000.

**Western blot:** Approx 22kDa band observed in Human Liver lysates (calculated MW of 22.1kDa according to NP\_000572.2). Recommended concentration: 1-3µg/ml.

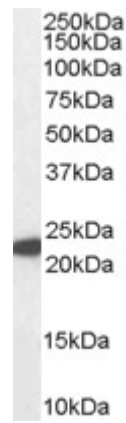
**IHC:** In paraffin embedded Human Cerebral Cortex shows staining of microglia.

Recommended concentration: 3-5µg/ml. Paraffin embedded Human Liver. Recommended concentration: 3.75µg/ml. Frozen sections of Porcin Kidney shows staining of cytoplasm in PCT epithelial cells. Recommended concentration: 20µg/ml.

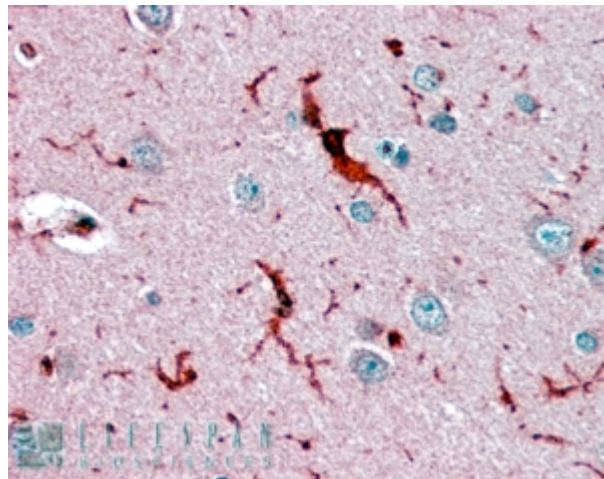
### Species Reactivity

**Tested:** Human, Pig

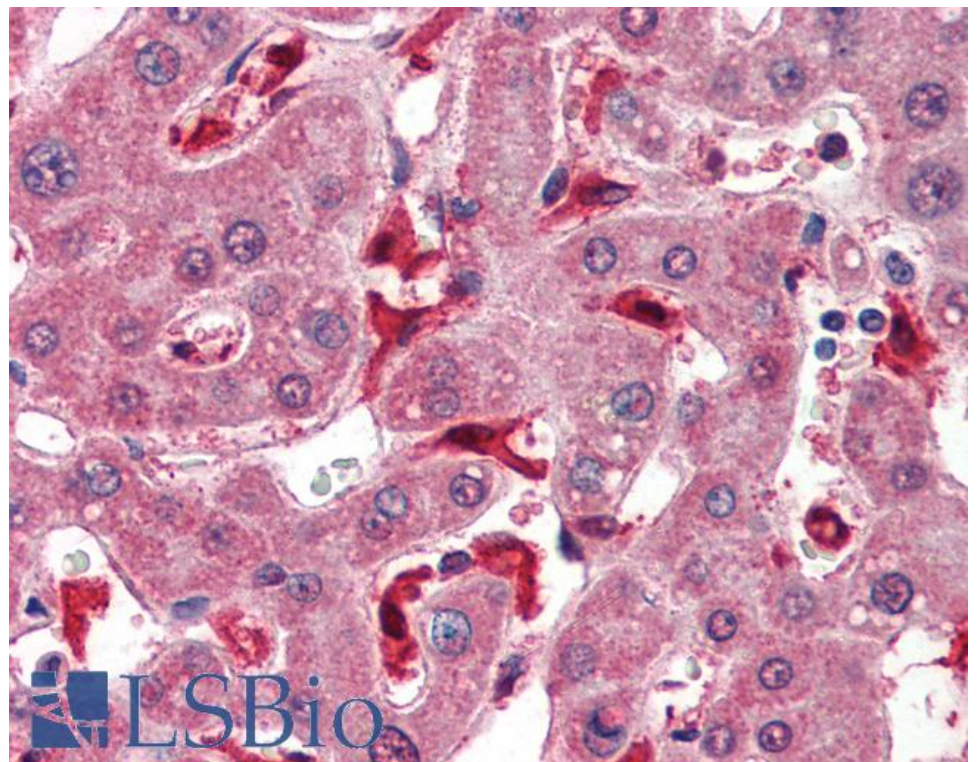
**Expected from sequence similarity:** Human



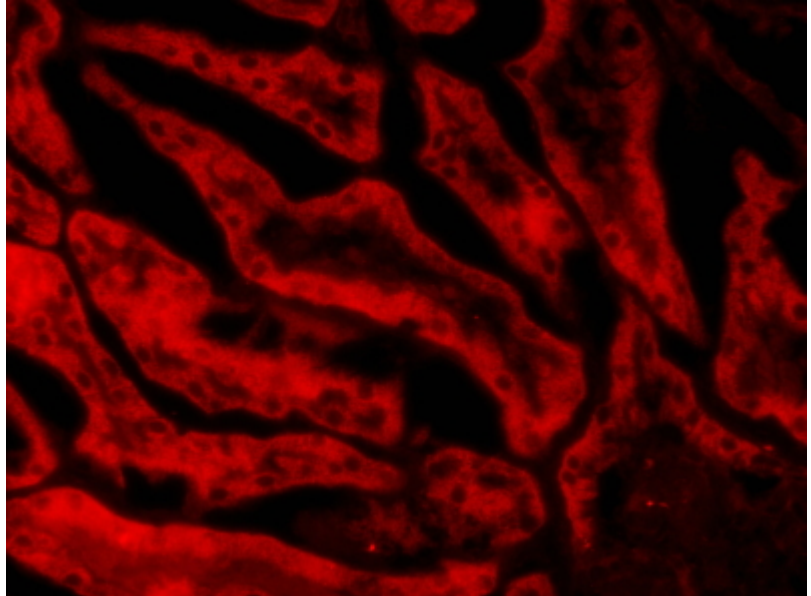
EB07283 (1 $\mu$ g/ml) staining of Human Liver lysate (35 $\mu$ g protein in RIPA buffer). Primary incubation was 1 hour. Detected by chemiluminescence.



EB07283 (3.8 $\mu$ g/ml) staining of paraffin embedded Human Cerebral Cortex. Steamed antigen retrieval with citrate buffer pH 6, AP-staining.



EB07283 (3.75µg/ml) staining of paraffin embedded Human Liver. Steamed antigen retrieval with citrate buffer pH 6, AP-staining.



EB07283 (20µg/ml) staining of PFA-perfused cryosection of Porcin Kidney. Microwave antigen retrieval with citrate buffer pH 3, CY3-staining. Data obtained from Dr. Hrvoje Brzica, University of Zagreb, Croatia