



UK Office

Everest Biotech Ltd

Cherwell Innovation Centre
77 Heyford Park
Upper Heyford
Oxfordshire
OX25 5HD
UK

Enquiries:

info@everestbiotech.com

Sales:

sales@everestbiotech.com

Tech support:

support@everestbiotech.com

Tel: +44 (0)1869 238326

Fax: +44 (0)1869 238327

US Office

Everest Biotech c/o Abcore

405 Maple Street, Suite A106
Ramona,
CA 92065
USA

Inquiries:

info@everestbiotech.com

Sales:

usasales@everestbiotech.com

Tech support:

support@everestbiotech.com

Tel: 888-320-4628 (toll-free)

Fax: 888-841-9041

www.everestbiotech.com

**Research Use Only. Not for
diagnostic or therapeutic use.**

EB07283 - Goat Anti-Glutathione Peroxidase 1 (isoform1) Antibody

Size: 100µg specific antibody in 200µl



Target Protein

Principal Names: glutathione peroxidase 1, HGNC:4553, GPX1, GSHPX1, MGC14399, MGC88245

Official Symbol: GPX1

Accession Number(s): NP_000572.2

Human GeneID(s): [2876](#)

Important Comments: This antibody is expected to recognise isoform 1 (NP_000572.2) only.

Immunogen

Peptide with sequence C-REALPAPSDDATA, from the internal region of the protein sequence according to NP_000572.2.

Please note the [peptide](#) is available for sale.

Purification and Storage

Purified from goat serum by ammonium sulphate precipitation followed by antigen affinity chromatography using the immunizing peptide.

Supplied at 0.5 mg/ml in Tris saline, 0.02% sodium azide, pH7.3 with 0.5% bovine serum albumin.

Aliquot and store at -20°C. Minimize freezing and thawing.

Applications Tested

Peptide ELISA: antibody detection limit dilution 1:32000.

Western blot: Approx 22kDa band observed in Human Liver lysates (calculated MW of 22.1kDa according to NP_000572.2). Recommended concentration: 1-3µg/ml.

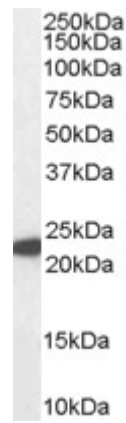
IHC: In paraffin embedded Human Cerebral Cortex shows staining of microglia.

Recommended concentration: 3-5µg/ml. Paraffin embedded Human Liver. Recommended concentration: 3.75µg/ml. Frozen sections of Porcin Kidney shows staining of cytoplasm in PCT epithelial cells. Recommended concentration: 20µg/ml.

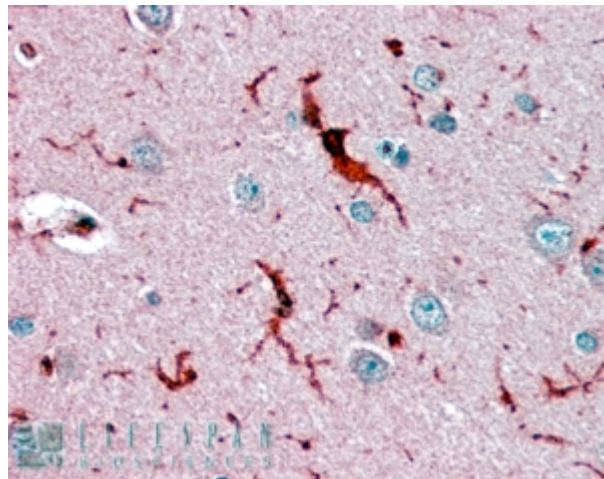
Species Reactivity

Tested: Human, Pig

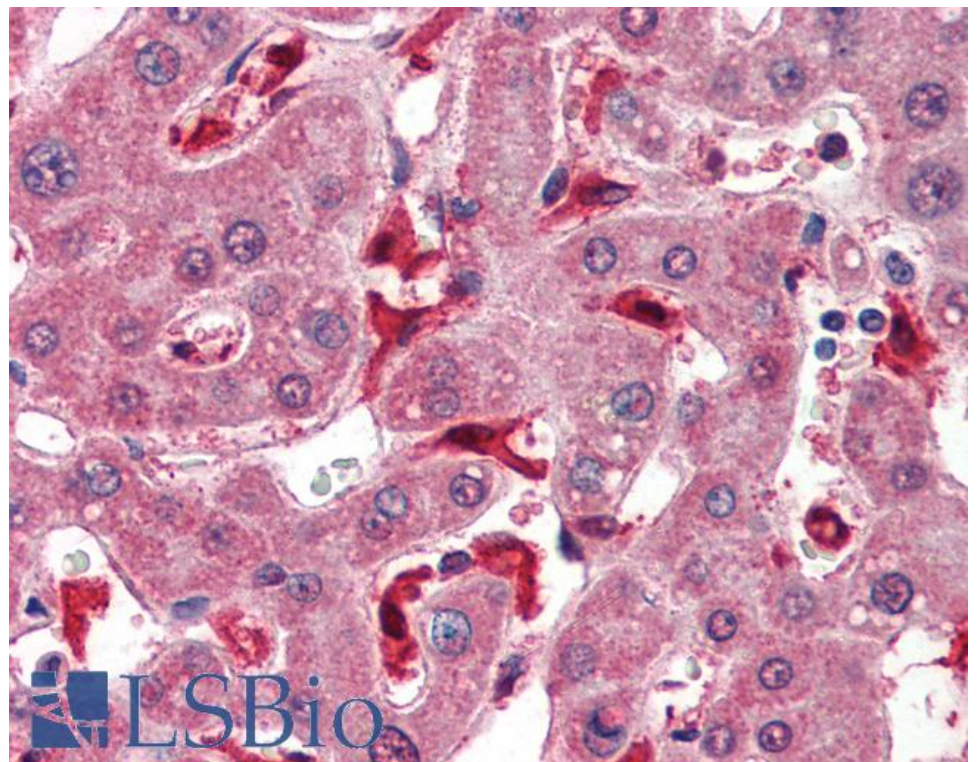
Expected from sequence similarity: Human



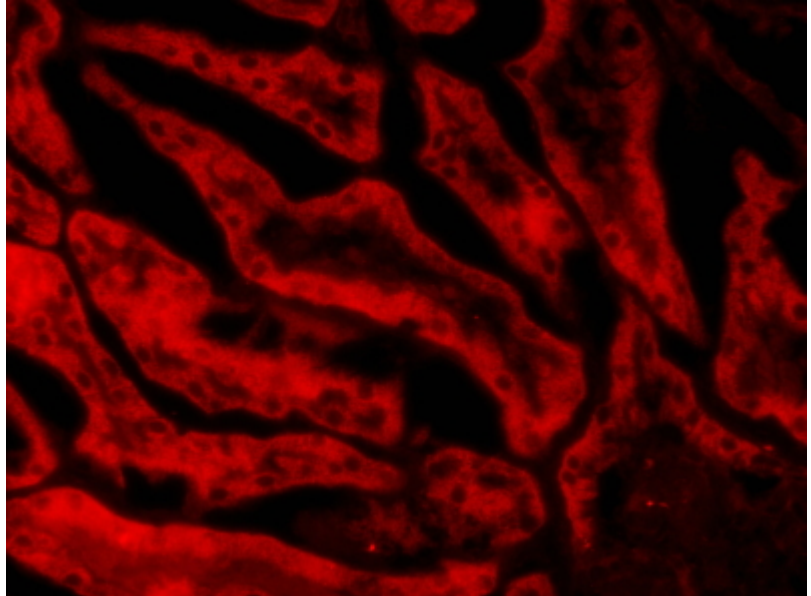
EB07283 (1 μ g/ml) staining of Human Liver lysate (35 μ g protein in RIPA buffer). Primary incubation was 1 hour. Detected by chemiluminescence.



EB07283 (3.8 μ g/ml) staining of paraffin embedded Human Cerebral Cortex. Steamed antigen retrieval with citrate buffer pH 6, AP-staining.



EB07283 (3.75µg/ml) staining of paraffin embedded Human Liver. Steamed antigen retrieval with citrate buffer pH 6, AP-staining.



EB07283 (20µg/ml) staining of PFA-perfused cryosection of Porcin Kidney. Microwave antigen retrieval with citrate buffer pH 3, CY3-staining. Data obtained from Dr. Hrvoje Brzica, University of Zagreb, Croatia