



UK Office

Everest Biotech Ltd

Cherwell Innovation Centre
77 Heyford Park
Upper Heyford
Oxfordshire
OX25 5HD
UK

Enquiries:

info@everestbiotech.com

Sales:

sales@everestbiotech.com

Tech support:

support@everestbiotech.com

Tel: +44 (0)1869 238326

www.everestbiotech.com

**Research Use Only. Not for
diagnostic or therapeutic use.**

EB06947-T - Goat Anti-Glycophorin A Antibody - Trial

Size: 20µg specific antibody in 40µl



Target Protein

Principal Names: glycophorin A (includes MN blood group), HGNC:4702, GYPA, GPA, GPErik, GPSAT, HGpMiV, HGpMiX, HGpMiXI, HGpSta(C), MN, MNS, Mi.V glycoprotein (24 AA), erythroid-lineage-specific membrane sialoglycoprotein, glycophorin A, glycophorin A, GPA, glycophorin Erik, glycophorin Mil, glycophorin MiV, glycophorin MiX, glycophorin SAT, glycophorin Sta type C, recombinant MiDR, recombinant glycophorin A-B Miltenberger-DR, CD235a, GpMillI, HGpMillI, glycophorin A (MN blood group), glycophorin MillI

Official Symbol: GYPA

Accession Number(s): NP_002090.2

Human GeneID(s): [2993](#)

Immunogen

Peptide with sequence C-SVEIENPETSDQ, from the C Terminus of the protein sequence according to NP_002090.2.

Please note the [peptide](#) is available for sale.

Purification and Storage

Purified from goat serum by ammonium sulphate precipitation followed by antigen affinity chromatography using the immunizing peptide.

Supplied at 0.5 mg/ml in Tris saline, 0.02% sodium azide, pH7.3 with 0.5% bovine serum albumin.

Aliquot and store at -20°C. Minimize freezing and thawing.

Applications Tested

Peptide ELISA: antibody detection limit dilution 1:2000.

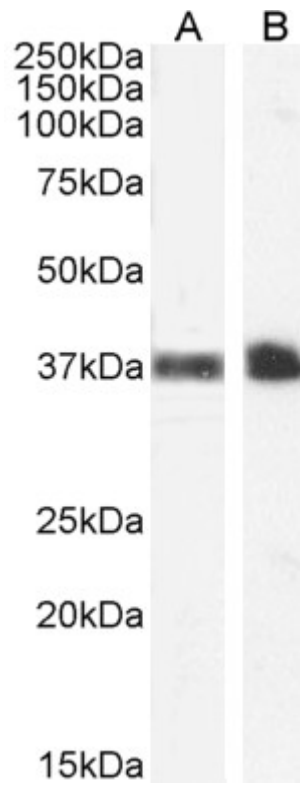
Western blot: Approx 37-38kDa band observed in Human Peripheral Blood Monocytes and Kidney lysates (calculated MW of 16.4kDa according to NP_002090.2). The observed molecular weight corresponds to earlier findings with different antibodies from other commercial sources and in the literature (Challou, N. et al., PMID: 8204624).

Recommended concentration: 1-3µg/ml. Primary incubation 1 hour at room temperature.

Species Reactivity

Tested: Human

Expected from sequence similarity: Human



EB06947 (1 μ g/ml) staining of Human Peripheral Blood Monocytes (A) and Kidney (B) lysate (35 μ g protein in RIPA buffer). Detected by chemiluminescence.