

International Office

Everest Biotech Ltd

Vector Laboratories, Inc.
6737 Mowry Ave
Newark, CA 94560
United States

Customer Service:

customerservice@vectorlabs.com

Technical Service:

technical@vectorlabs.com

Tel: +1 (800) 227-6666

www.everestbiotech.com

**Research Use Only. Not for
diagnostic or therapeutic use.**

EB12689 - Goat Anti-GNA12 Antibody

Size: 100µg specific antibody in 200µl



Target Protein

Principal Names: GNA12, guanine nucleotide binding protein (G protein) alpha 12, NNX3, RMP, gep, G-protein subunit alpha-12, WUGSC:H_GS165O14.2, g alpha-12, guanine nucleotide-binding protein subunit alpha-12

Official Symbol: GNA12

Accession Number(s): NP_031379.2; NP_001269369.1; NP_001269370.1; NP_001280021.1

Human GenelD(s): [2768](#)

Non-Human GenelD(s): 14673 (mouse), 81663 (rat)

Important Comments: This antibody is expected to recognize all reported isoforms (NP_031379.2; NP_001269369.1; NP_001269370.1; NP_001280021.1).

Immunogen

Peptide with sequence C-KKHFPDFRGDPHR, from the internal region of the protein sequence according to NP_031379.2; NP_001269369.1; NP_001269370.1; NP_001280021.1.

Please note the [peptide](#) is available for sale.

Purification and Storage

Purified from goat serum by ammonium sulphate precipitation followed by antigen affinity chromatography using the immunizing peptide.

Supplied at 0.5 mg/ml in Tris saline, 0.02% sodium azide, pH7.3 with 0.5% bovine serum albumin.

Aliquot and store at -20°C. Minimize freezing and thawing.

Applications Tested

Peptide ELISA: antibody detection limit dilution 1:128000.

Western blot: Approx 37kDa band observed in Human Placenta lysates and approx 42kDa in Mouse Heart lysates (calculated MW of 37.6kDa according to Human NP_001269370.1 and 44.1kDa according to Mouse NP_034432.1). Recommended concentration: 0.3-1µg/ml.

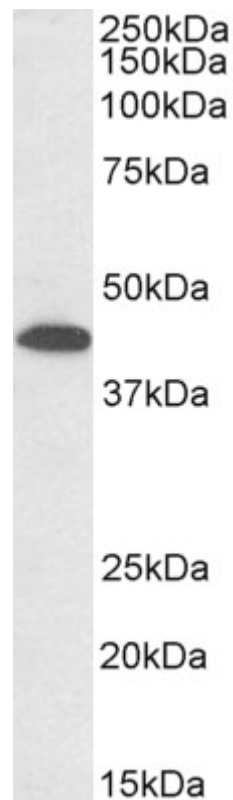
Species Reactivity

Tested: Human, Mouse

Expected from sequence similarity: Human, Mouse, Rat, Dog, Pig, Cow



EB12689 (1 μ g/ml) staining of Human Placenta lysate (35 μ g protein in RIPA buffer). Primary incubation was 1 hour. Detected by chemiluminescence.



EB12689 (0.3 μ g/ml) staining of Mouse Heart lysate (35 μ g protein in RIPA buffer). Primary incubation was 1 hour. Detected by chemiluminescence.