

UK Office

Everest Biotech Ltd

Cherwell Innovation Centre
77 Heyford Park
Upper Heyford
Oxfordshire
OX25 5HD
UK

Enquiries:

info@everestbiotech.com

Sales:

sales@everestbiotech.com

Tech support:

support@everestbiotech.com

Tel: +44 (0)1869 238326

www.everestbiotech.com

**Research Use Only. Not for
diagnostic or therapeutic use.**

EB10456 - Goat Anti-GNB3 & GNB4 Antibody

Size: 100µg specific antibody in 200µl



Target Protein

Principal Names: G protein, beta-3 subunit, GTP-binding regulatory protein beta-3 chain, guanine nucleotide binding protein (G protein), beta polypeptide 3, guanine nucleotide-binding protein G(I)/G(S)/G(T) beta subunit 3, guanine nucleotide-binding protein, beta-3, GNB3

Official Symbol: GNB3

Accession Number(s): NP_002066.1, NP_067642.1

Human GeneID(s): [2784](#) , [59345](#)

Non-Human GeneID(s): 60449 (rat)

Important Comments: This antibody is expected to recognize GNB3 & GNB4 (GeneID: 2784, 59345; ProteinID: NP_002066.1; NP_067642.1).

Immunogen

Peptide with sequence SGHDNRVSLGVT, from the internal region of the protein sequence according to NP_002066.1, NP_067642.1.

Please note the [peptide](#) is available for sale.

Purification and Storage

Purified from goat serum by ammonium sulphate precipitation followed by antigen affinity chromatography using the immunizing peptide.

Supplied at 0.5 mg/ml in Tris saline, 0.02% sodium azide, pH7.3 with 0.5% bovine serum albumin.

Aliquot and store at -20°C. Minimize freezing and thawing.

Applications Tested

Peptide ELISA: antibody detection limit dilution 1:16000.

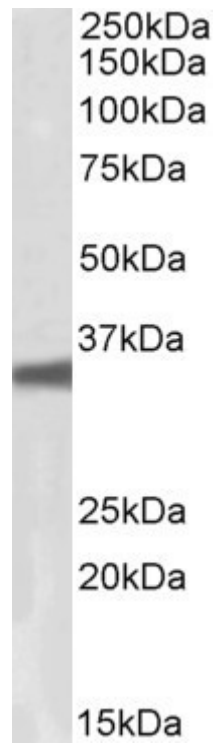
Western blot: Approx 35kDa band observed in lysates of cell line HepG2 (calculated MW of 37.2kDa according to NP_002066.1. Recommended concentration: 0.1-0.3µg/ml.

IHC: In paraffin embedded Human Cerebellum shows strong axonal staining in the Molecular layer and less so in the Granular layer. Recommended concentration, 3-5µg/ml.

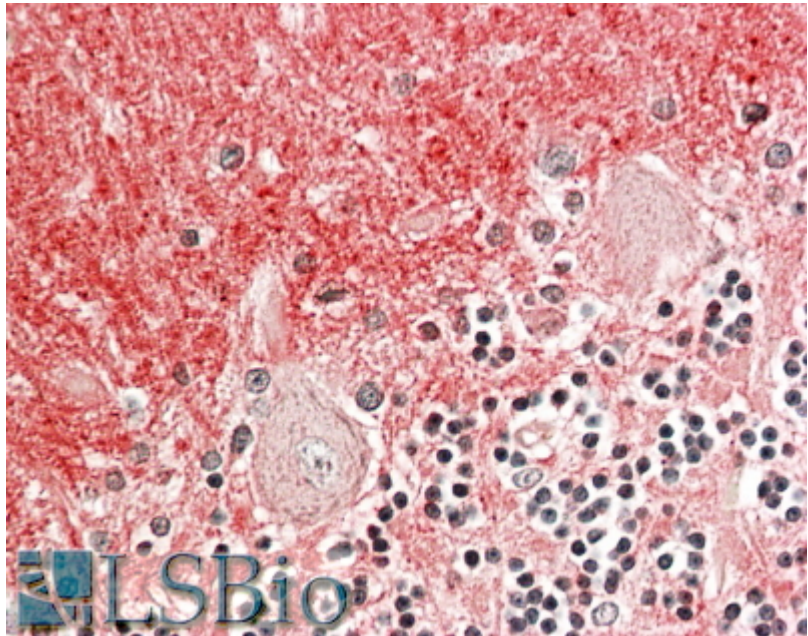
Species Reactivity

Tested: Human

Expected from sequence similarity: Human



EB10456 (0.1 μ g/ml) staining of HepG2 lysate (35 μ g protein in RIPA buffer). Primary incubation was 1 hour.
Detected by chemiluminescence.



EB10456 (3.8 μ g/ml) staining of paraffin embedded Human Cerebellum. Steamed antigen retrieval with citrate buffer pH 6, AP-staining.