



## UK Office

### Everest Biotech Ltd

Cherwell Innovation Centre  
77 Heyford Park  
Upper Heyford  
Oxfordshire  
OX25 5HD  
UK

Enquiries:

[info@everestbiotech.com](mailto:info@everestbiotech.com)

Sales:

[sales@everestbiotech.com](mailto:sales@everestbiotech.com)

Tech support:

[support@everestbiotech.com](mailto:support@everestbiotech.com)

Tel: +44 (0)1869 238326

Fax: +44 (0)1869 238327

## US Office

### Everest Biotech c/o Abcore

405 Maple Street, Suite A106  
Ramona,  
CA 92065  
USA

Inquiries:

[info@everestbiotech.com](mailto:info@everestbiotech.com)

Sales:

[usasales@everestbiotech.com](mailto:usasales@everestbiotech.com)

Tech support:

[support@everestbiotech.com](mailto:support@everestbiotech.com)

Tel: 888-320-4628 (toll-free)

Fax: 888-841-9041

[www.everestbiotech.com](http://www.everestbiotech.com)

**Research Use Only. Not for  
diagnostic or therapeutic use.**

## EB10456 - Goat Anti-GNB3 & GNB4 Antibody

Size: 100µg specific antibody in 200µl



### Target Protein

**Principal Names:** G protein, beta-3 subunit, GTP-binding regulatory protein beta-3 chain, guanine nucleotide binding protein (G protein), beta polypeptide 3, guanine nucleotide-binding protein G(I)/G(S)/G(T) beta subunit 3, guanine nucleotide-binding protein, beta-3, GNB3

**Official Symbol:** GNB3

**Accession Number(s):** NP\_002066.1, NP\_067642.1

**Human GeneID(s):** [2784](#) , [59345](#)

**Non-Human GeneID(s):** 60449 (rat)

**Important Comments:** This antibody is expected to recognize GNB3 & GNB4 (GeneID: 2784, 59345; ProteinID: NP\_002066.1; NP\_067642.1).

### Immunogen

Peptide with sequence SGHDNRVSLGVT, from the internal region of the protein sequence according to NP\_002066.1, NP\_067642.1.

Please note the [peptide](#) is available for sale.

### Purification and Storage

Purified from goat serum by ammonium sulphate precipitation followed by antigen affinity chromatography using the immunizing peptide.

Supplied at 0.5 mg/ml in Tris saline, 0.02% sodium azide, pH7.3 with 0.5% bovine serum albumin.

Aliquot and store at -20°C. Minimize freezing and thawing.

### Applications Tested

**Peptide ELISA:** antibody detection limit dilution 1:16000.

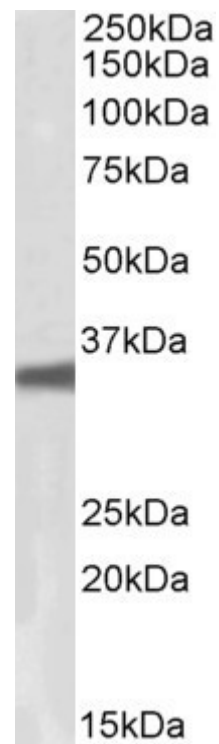
**Western blot:** Approx 35kDa band observed in lysates of cell line HepG2 (calculated MW of 37.2kDa according to NP\_002066.1. Recommended concentration: 0.1-0.3µg/ml.

**IHC:** In paraffin embedded Human Cerebellum shows strong axonal staining in the Molecular layer and less so in the Granular layer. Recommended concentration, 3-5µg/ml.

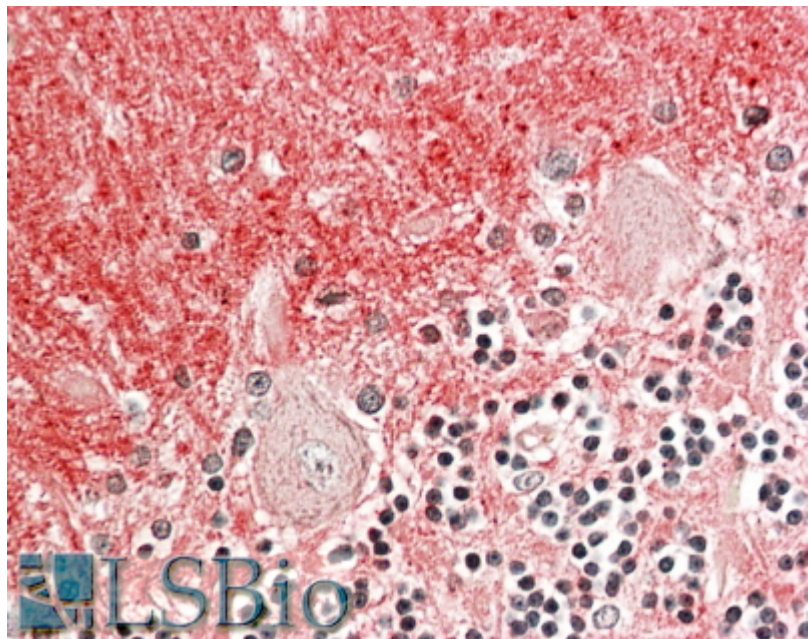
### Species Reactivity

**Tested:** Human

**Expected from sequence similarity:** Human



EB10456 (0.1µg/ml) staining of HepG2 lysate (35µg protein in RIPA buffer). Primary incubation was 1 hour.  
Detected by chemiluminescence.



EB10456 (3.8µg/ml) staining of paraffin embedded Human Cerebellum. Steamed antigen retrieval with citrate buffer pH 6, AP-staining.