



## International Office

### Everest Biotech Ltd

Vector Laboratories, Inc.  
6737 Mowry Ave  
Newark, CA 94560  
United States

Customer Service:

[customerservice@vectorlabs.com](mailto:customerservice@vectorlabs.com)

Technical Service:

[technical@vectorlabs.com](mailto:technical@vectorlabs.com)

Tel: +1 (800) 227-6666

[www.everestbiotech.com](http://www.everestbiotech.com)

**Research Use Only. Not for  
diagnostic or therapeutic use.**

## EB12563 - Goat Anti-GNL3 (aa115-126) Antibody

Size: 100µg specific antibody in 200µl



### Target Protein

**Principal Names:** GNL3, guanine nucleotide binding protein-like 3 (nucleolar), C77032, E2IG3, NNP47, NS, E2-induced gene 3 protein, estradiol-induced nucleotide binding protein, guanine nucleotide-binding protein-like 3, novel nucleolar protein 47, nucleolar GTP-binding protein 3, nucleostemin

**Official Symbol:** GNL3

**Accession Number(s):** NP\_055181.3; NP\_996561.1

**Human GeneID(s):** [26354](#)

**Important Comments:** This antibody is expected to recognize both reported isoforms (NP\_055181.3; NP\_996561.1). Reported variants represent identical protein: NP\_996561.1, NP\_996562.1.

### Immunogen

Peptide with sequence C-TENKAKSGKQNS, from the internal region of the protein sequence according to NP\_055181.3; NP\_996561.1.

Please note the [peptide](#) is available for sale.

### Purification and Storage

Purified from goat serum by ammonium sulphate precipitation followed by antigen affinity chromatography using the immunizing peptide.

Supplied at 0.5 mg/ml in Tris saline, 0.02% sodium azide, pH7.3 with 0.5% bovine serum albumin.

Aliquot and store at -20°C. Minimize freezing and thawing.

### Applications Tested

**Peptide ELISA:** antibody detection limit dilution 1:128000.

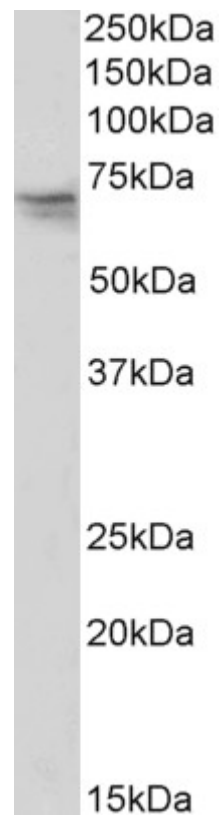
**Western blot:** Approx 65kDa band observed in nuclear lysates of cell line K562 (calculated MW of 62.0kDa according to NP\_055181.3). Recommended concentration: 0.03-0.1µg/ml. Primary incubation was 1 hour.

**IHC:** Paraffin embedded Human Small Intestine. Recommended concentration: 5µg/ml.

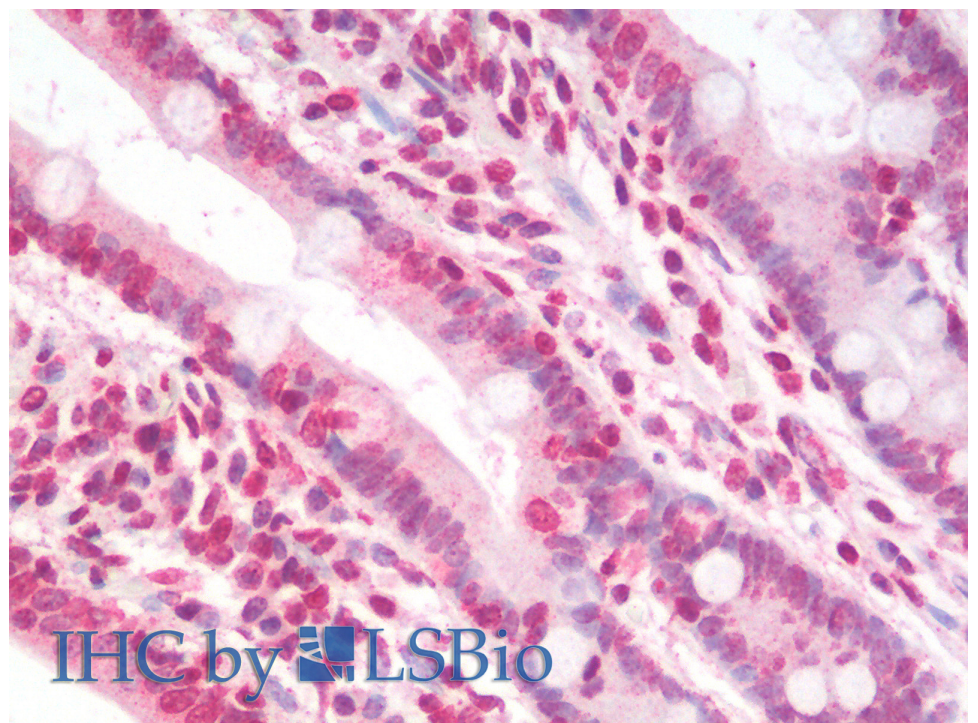
### Species Reactivity

**Tested:** Human

**Expected from sequence similarity:** Human



EB12563 (0.03 $\mu$ g/ml) staining of K562 nuclear lysate (35 $\mu$ g protein in RIPA buffer). Detected by chemiluminescence.



EB12563 (5 $\mu$ g/ml) staining of paraffin embedded Human Small Intestine. Steamed antigen retrieval with citrate buffer pH 6, AP-staining.