

## UK Office

### Everest Biotech Ltd

Cherwell Innovation Centre  
77 Heyford Park  
Upper Heyford  
Oxfordshire  
OX25 5HD  
UK

Enquiries:

[info@everestbiotech.com](mailto:info@everestbiotech.com)

Sales:

[sales@everestbiotech.com](mailto:sales@everestbiotech.com)

Tech support:

[support@everestbiotech.com](mailto:support@everestbiotech.com)

Tel: +44 (0)1869 238326

[www.everestbiotech.com](http://www.everestbiotech.com)

**Research Use Only. Not for  
diagnostic or therapeutic use.**

## EB06925 - Goat Anti-GOLGA6 / GLP Antibody

Size: 100µg specific antibody in 200µl



### Target Protein

**Principal Names:** GOLGA6, golgi autoantigen, golgin subfamily a, member 6, HGNC:13567, GLP, Golgi autoantigen, golgin subfamily a, 6, Golgin linked to PML, golgin-like protein, GOLGA6B, GOLGA, Golgin subfamily A member 6B

**Official Symbol:** GOLGA6B

**Accession Number(s):** NP\_061122.4; NP\_001033729.1

**Human GeneID(s):** [55889](#) , [342096](#)

**Important Comments:** GeneID 55889 may be a pseudogene, while GeneID 342096 is thought to encode a functional protein.

### Immunogen

Peptide with sequence C-DLPKEKADGTEQ, from the internal region of the protein sequence according to NP\_061122.4; NP\_001033729.1.

Please note the [peptide](#) is available for sale.

### Purification and Storage

Purified from goat serum by ammonium sulphate precipitation followed by antigen affinity chromatography using the immunizing peptide.

Supplied at 0.5 mg/ml in Tris saline, 0.02% sodium azide, pH7.3 with 0.5% bovine serum albumin.

Aliquot and store at -20°C. Minimize freezing and thawing.

### Applications Tested

**Peptide ELISA:** antibody detection limit dilution 1:1000.

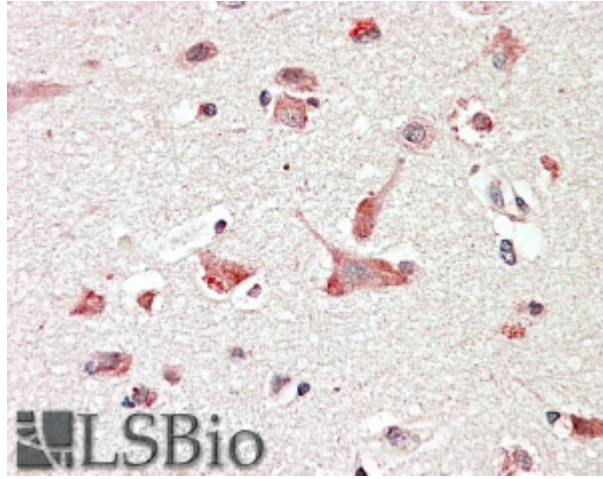
**Western blot:** Preliminary experiments gave an approx 45kDa band in human liver lysates after 1µg/ml antibody staining. Please note that currently we cannot find an explanation in the literature for the band we observe given the calculated size of 79.9kDa according to NP\_001033729.1. The 45kDa band was successfully blocked by incubation with the immunizing peptide. We would appreciate any feedback from people in the field - have any results been reported with other antibodies/lysates? Have any further splice variants/modified forms been reported?

**IHC:** In paraffin embedded Human Cerebral Cortex shows localized cytoplasm staining consistent with Golgi. Recommended concentration, 3-6µg/ml.

### Species Reactivity

**Tested:** Human

**Expected from sequence similarity:** Human



EB06925 (3.8µg/ml) staining of paraffin embedded Human Cerebral Cortex. Steamed antigen retrieval with citrate buffer pH 6, AP-staining.