

UK Office

Everest Biotech Ltd

Cherwell Innovation Centre
77 Heyford Park
Upper Heyford
Oxfordshire
OX25 5HD
UK

Enquiries:

info@everestbiotech.com

Sales:

sales@everestbiotech.com

Tech support:

support@everestbiotech.com

Tel: +44 (0)1869 238326

www.everestbiotech.com

**Research Use Only. Not for
diagnostic or therapeutic use.**

EB05667 - Goat Anti-GOLPH2 Antibody

Size: 100µg specific antibody in 200µl



Target Protein

Principal Names: GOLM1, GOLPH2, golgi phosphoprotein 2, GP73, golgi membrane protein GP73, golgi membrane protein 1, RP11-379P1.3, C9orf155, FLJ22634, FLJ23608, PSEC0257, bA379P1.3, golgi protein, 73-kD

Official Symbol: GOLM1

Accession Number(s): NP_057632.2; NP_808800.1

Human GeneID(s): [51280](#)

Important Comments: Both variants (NP_057632.2; NP_808800.1) encode the same isoform

Immunogen

Peptide with sequence C-NLLDQREKRNHTL, from the C Terminus of the protein sequence according to NP_057632.2; NP_808800.1.

Please note the [peptide](#) is available for sale.

Purification and Storage

Purified from goat serum by ammonium sulphate precipitation followed by antigen affinity chromatography using the immunizing peptide.

Supplied at 0.5 mg/ml in Tris saline, 0.02% sodium azide, pH7.3 with 0.5% bovine serum albumin.

Aliquot and store at -20°C. Minimize freezing and thawing.

Applications Tested

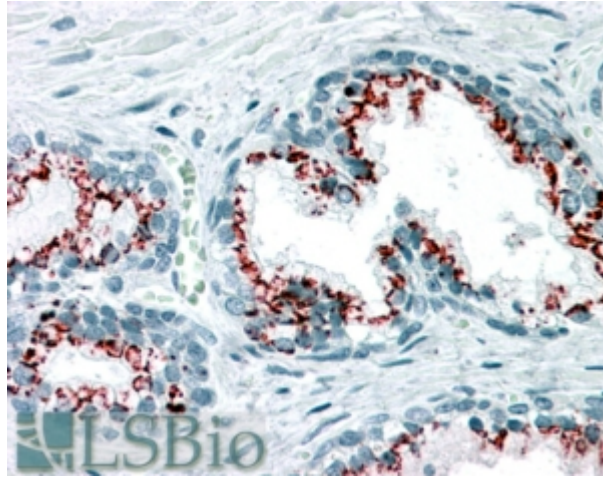
Peptide ELISA: antibody detection limit dilution 1:16000.

IHC: In paraffin embedded Human Prostate shows luminal staining of secretory cells in the glands. Recommended concentration: 3-6µg/ml. Paraffin embedded Human Uterus and Small Intestine. Recommended concentration: 3.75µg/ml.

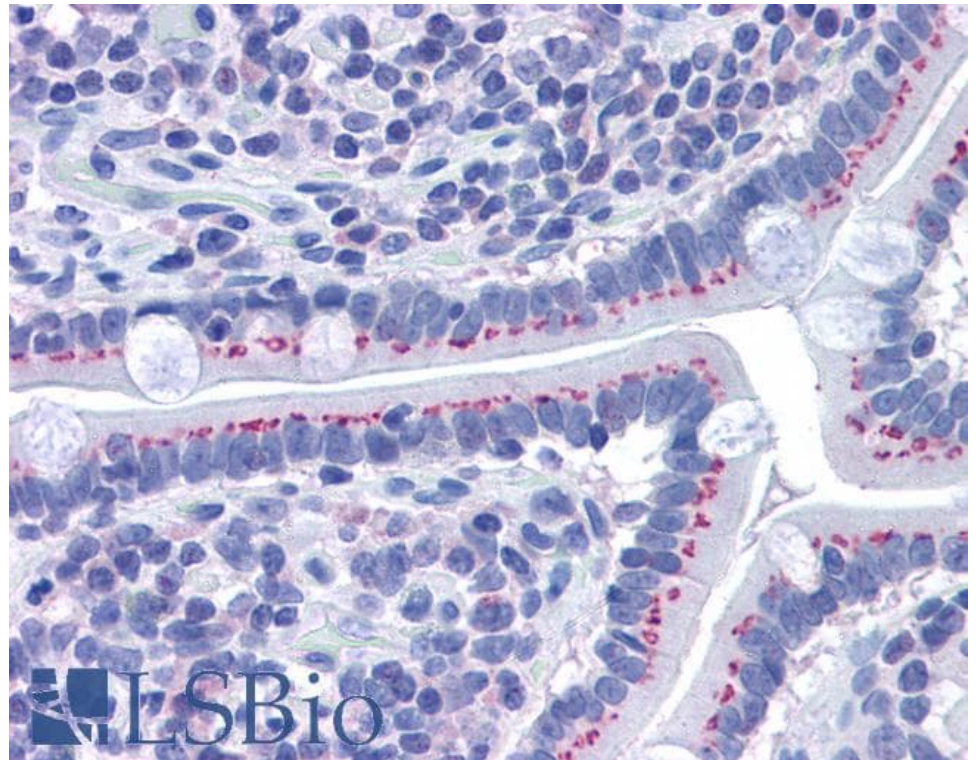
Species Reactivity

Tested: Human

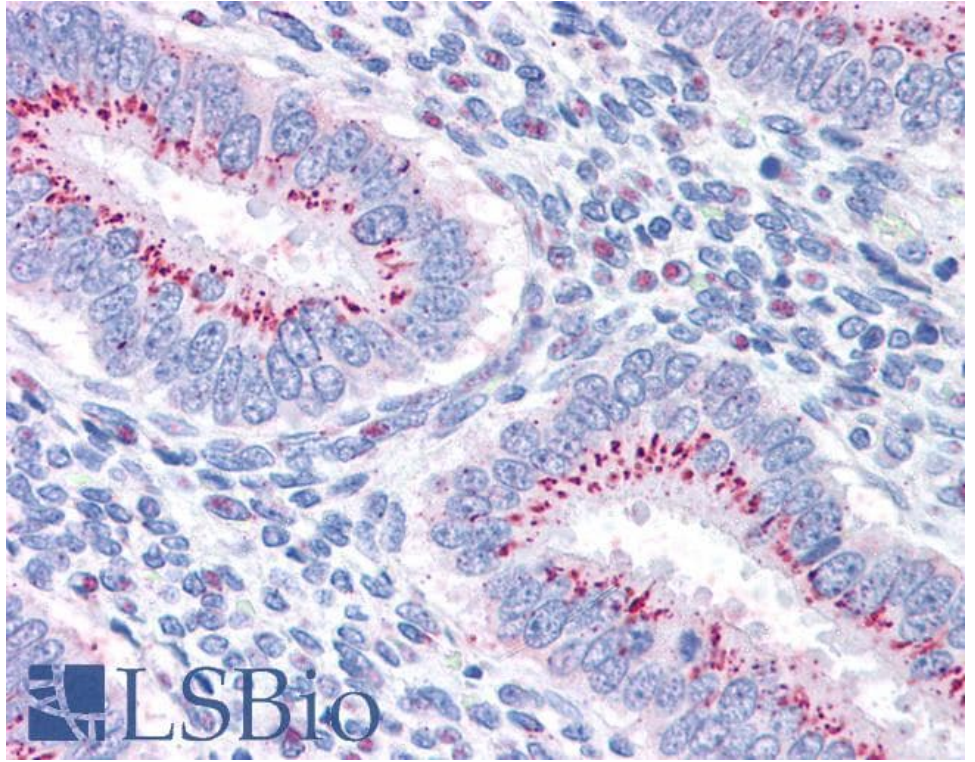
Expected from sequence similarity: Human



EB05667 (3.75µg/ml) staining of paraffin embedded Human Prostate. Steamed antigen retrieval with citrate buffer pH 6, AP-staining.



EB05667 (3.75µg/ml) staining of paraffin embedded Human Small Intestine. Steamed antigen retrieval with citrate buffer pH 6, AP-staining.



EB05667 (3.75µg/ml) staining of paraffin embedded Human Uterus. Steamed antigen retrieval with citrate buffer pH 6, AP-staining.