

## UK Office

### Everest Biotech Ltd

Cherwell Innovation Centre  
77 Heyford Park  
Upper Heyford  
Oxfordshire  
OX25 5HD  
UK

Enquiries:

[info@everestbiotech.com](mailto:info@everestbiotech.com)

Sales:

[sales@everestbiotech.com](mailto:sales@everestbiotech.com)

Tech support:

[support@everestbiotech.com](mailto:support@everestbiotech.com)

Tel: +44 (0)1869 238326

[www.everestbiotech.com](http://www.everestbiotech.com)

**Research Use Only. Not for  
diagnostic or therapeutic use.**

## EB08213 - Goat Anti-GOT1 (aa 157-167) Antibody

Size: 100µg specific antibody in 200µl



### Target Protein

**Principal Names:** GOT1, glutamic-oxaloacetic transaminase 1, soluble (aspartate aminotransferase 1), GIG18, aspartate aminotransferase 1, growth-inhibiting protein 18

**Official Symbol:** GOT1

**Accession Number(s):** NP\_002070.1

**Human GeneID(s):** [2805](#)

**Non-Human GeneID(s):** 24401 (rat)

### Immunogen

Peptide with sequence C-RSYRYWDAEKR, from the internal region of the protein sequence according to NP\_002070.1.

Please note the [peptide](#) is available for sale.

### Purification and Storage

Purified from goat serum by ammonium sulphate precipitation followed by antigen affinity chromatography using the immunizing peptide.

Supplied at 0.5 mg/ml in Tris saline, 0.02% sodium azide, pH7.3 with 0.5% bovine serum albumin.

Aliquot and store at -20°C. Minimize freezing and thawing.

### Applications Tested

**Peptide ELISA:** antibody detection limit dilution 1:4000.

**Western blot:** Approx 40kDa band observed in Human Brain (Cerebellum), Liver and Skeletal Muscle lysates (calculated MW of 46.2kDa according to NP\_002070.1). The observed molecular weight corresponds to earlier findings in literature with different antibodies (Berk et al, Proc Natl Acad Sci U S A. 1990 May;87(9):3484-8; PMID: 2185471). Recommended concentration: 0.01-1µg/ml.

**IHC:** In paraffin embedded Human Heart shows strong staining of the capillary network between the myocardial fibres in transverse section. Recommended concentration: 2-3µg/ml. Paraffin embedded Human Kidney. Recommended concentration: 5µg/ml.

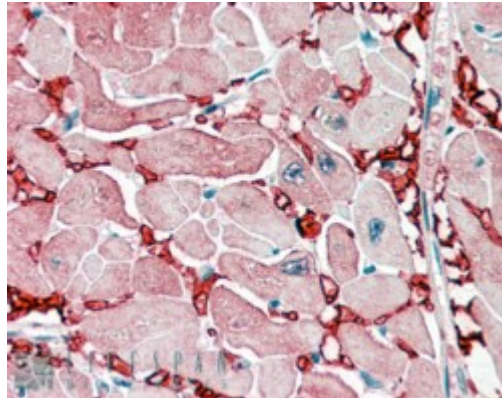
### Species Reactivity

**Tested:** Human

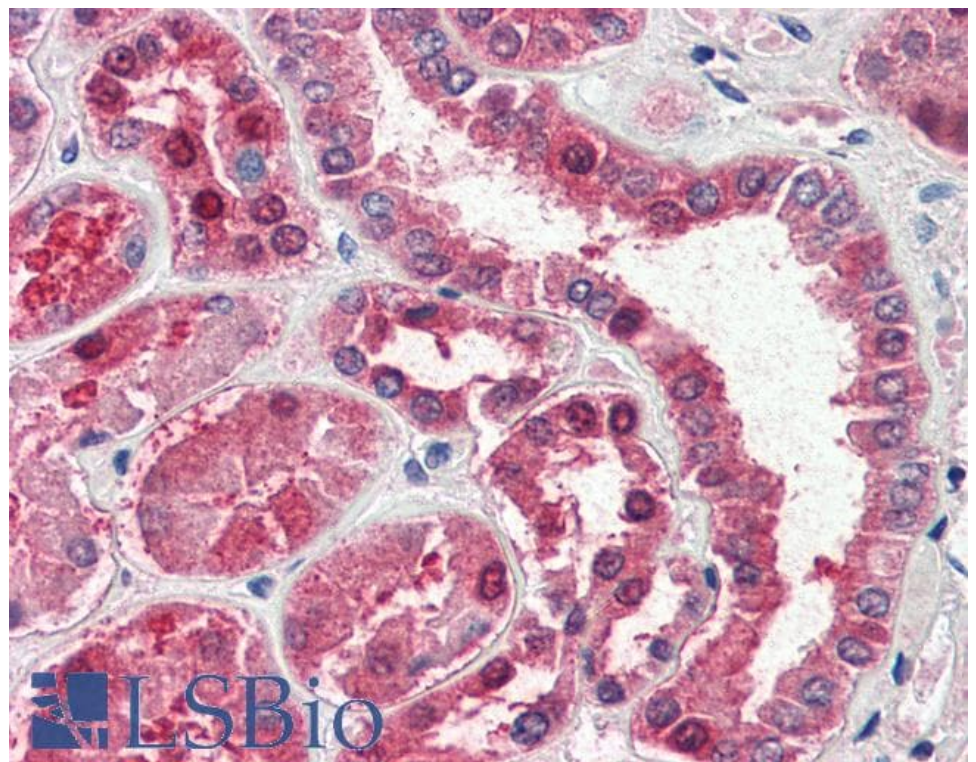
**Expected from sequence similarity:** Human, Rat



EB08213 (0.01 $\mu$ g/ml) staining of Human Liver lysate (35 $\mu$ g protein in RIPA buffer). Primary incubation was 1 hour. Detected by chemiluminescence.



EB08213 (2.5 $\mu$ g/ml) staining of paraffin embedded Human Heart. Steamed antigen retrieval with citrate buffer pH 6, AP-staining.



EB08213 (5 $\mu$ g/ml) staining of paraffin embedded Human Kidney. Steamed antigen retrieval with citrate buffer pH 6, AP-staining.