

## UK Office

### Everest Biotech Ltd

Cherwell Innovation Centre  
77 Heyford Park  
Upper Heyford  
Oxfordshire  
OX25 5HD  
UK

Enquiries:

[info@everestbiotech.com](mailto:info@everestbiotech.com)

Sales:

[sales@everestbiotech.com](mailto:sales@everestbiotech.com)

Tech support:

[support@everestbiotech.com](mailto:support@everestbiotech.com)

Tel: +44 (0)1869 238326

[www.everestbiotech.com](http://www.everestbiotech.com)

**Research Use Only. Not for  
diagnostic or therapeutic use.**

## EB08213-B - Goat Anti-GOT1 (aa 157-167), Biotinylated Antibody

Size: 100µg specific antibody in 200µl



### Target Protein

**Principal Names:** GOT1, glutamic-oxaloacetic transaminase 1, AST1, ASTQTL1, GIG18, cAspAT, cCAT, aspartate aminotransferase 1, aspartate transaminase 1, cysteine aminotransferase, cytoplasmic, cysteine transaminase, cytoplasmic, glutamate oxaloacetate transaminase 1, glutamic-oxaloacetic transaminase 1, soluble, growth-inhibiting protein 18, testis secretory sperm-binding protein Li 196a, transaminase A

**Official Symbol:** GOT1

**Accession Number(s):** NP\_002070.1

**Human GeneID(s):** [2805](#)

**Non-Human GeneID(s):** 24401 (rat)

### Immunogen

Peptide with sequence CRSYRYWDAEKR., from the internal region of the protein sequence according to NP\_002070.1.

Please note the [peptide](#) is available for sale.

### Purification and Storage

Purified from goat serum by ammonium sulphate precipitation followed by antigen affinity chromatography using the immunizing peptide.

Supplied at 0.5 mg/ml in Tris saline, 0.02% sodium azide, pH7.3 with 0.5% bovine serum albumin.

Aliquot and store at -20°C. Minimize freezing and thawing.

### Applications Tested

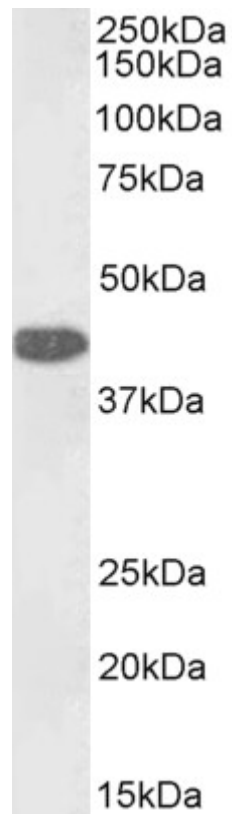
**Peptide ELISA:** antibody detection limit dilution 1:4000.

**Western blot:** Approx 40kDa band observed in Human Liver lysates (calculated MW of 46.2kDa according to NP\_002070.1). See non-biotinylated parental product's datasheet for further QC data. Recommended concentration: 0.1-0.3µg/ml.

### Species Reactivity

**Tested:** Human

**Expected from sequence similarity:** Human, Rat



Biotinylated EB08213 (0.1µg/ml) staining of Human Liver lysate (35µg protein in RIPA buffer), exactly mirroring its parental non-biotinylated product. Primary incubation was 1 hour. Detected by chemiluminescence, using streptavidin-HRP and using NAP blocker as a substitute for skimmed milk.