



## UK Office

### Everest Biotech Ltd

Cherwell Innovation Centre  
77 Heyford Park  
Upper Heyford  
Oxfordshire  
OX25 5HD  
UK

Enquiries:

[info@everestbiotech.com](mailto:info@everestbiotech.com)

Sales:

[sales@everestbiotech.com](mailto:sales@everestbiotech.com)

Tech support:

[support@everestbiotech.com](mailto:support@everestbiotech.com)

Tel: +44 (0)1869 238326

Fax: +44 (0)1869 238327

## US Office

### Everest Biotech c/o Abcore

405 Maple Street, Suite A106  
Ramona,  
CA 92065  
USA

Inquiries:

[info@everestbiotech.com](mailto:info@everestbiotech.com)

Sales:

[usasales@everestbiotech.com](mailto:usasales@everestbiotech.com)

Tech support:

[support@everestbiotech.com](mailto:support@everestbiotech.com)

Tel: 888-320-4628 (toll-free)

Fax: 888-841-9041

[www.everestbiotech.com](http://www.everestbiotech.com)

**Research Use Only. Not for  
diagnostic or therapeutic use.**

## EB09738 - Goat Anti-GPI / Neuroleukin (aa81-93) Antibody

Size: 100µg specific antibody in 200µl



### Target Protein

**Principal Names:** GPI, glucose phosphate isomerase, AMF, GNPI, NLK, PGI, SA-36, autocrine motility factor;, glucose-6-phosphate isomerase, hexose monophosphate isomerase, hexosephosphate isomerase;, neuroleukin, oxoisomerase;, phosphoglucose isomerase, phosphohexomutase, phosphohexose isomerase, phosphosaccharomutase;, sperm antigen-36

**Official Symbol:** GPI

**Accession Number(s):** NP\_000166.2

**Human GenelD(s):** [2821](#)

### Immunogen

Peptide with sequence C-RERMFNGEKINYT, from the internal region (near N Terminus) of the protein sequence according to NP\_000166.2.

Please note the [peptide](#) is available for sale.

### Purification and Storage

Purified from goat serum by ammonium sulphate precipitation followed by antigen affinity chromatography using the immunizing peptide.

Supplied at 0.5 mg/ml in Tris saline, 0.02% sodium azide, pH7.3 with 0.5% bovine serum albumin.

Aliquot and store at -20°C. Minimize freezing and thawing.

### Applications Tested

**Peptide ELISA:** antibody detection limit dilution 1:128000.

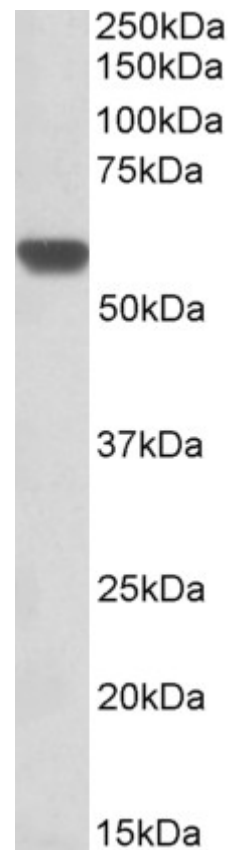
**Western blot:** Approx 60kDa band observed in Human Heart lysates and approx 55kDa observed in lysates of cell lines HeLa, A431, A549, MCF7, Jurkat and K562 (calculated MW of 63.1kDa according to NP\_000166.2). Recommended concentration: 0.1-0.3µg/ml. Primary incubation was 1 hour.

**IHC:** Paraffin embedded Human Testis, Thyroid and Kidney. Recommended concentration: 3.75µg/ml.

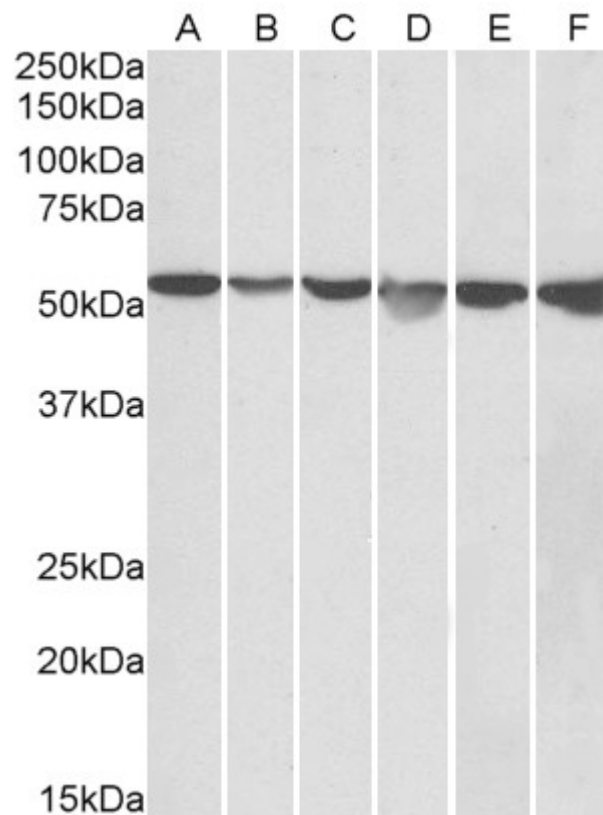
### Species Reactivity

**Tested:** Human

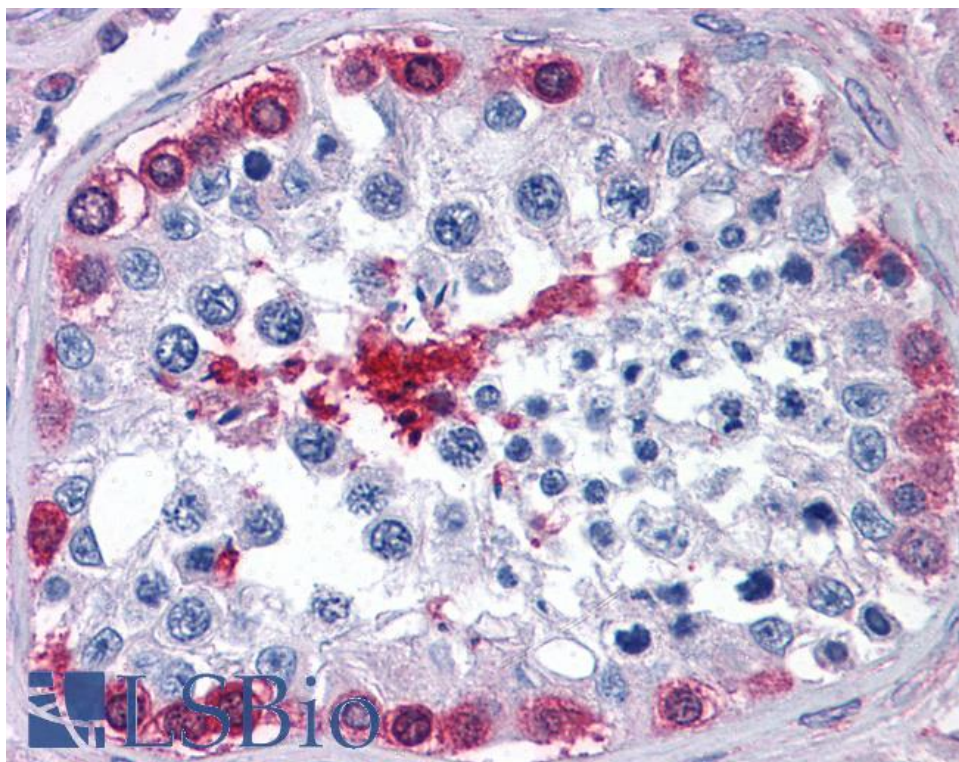
**Expected from sequence similarity:** Human



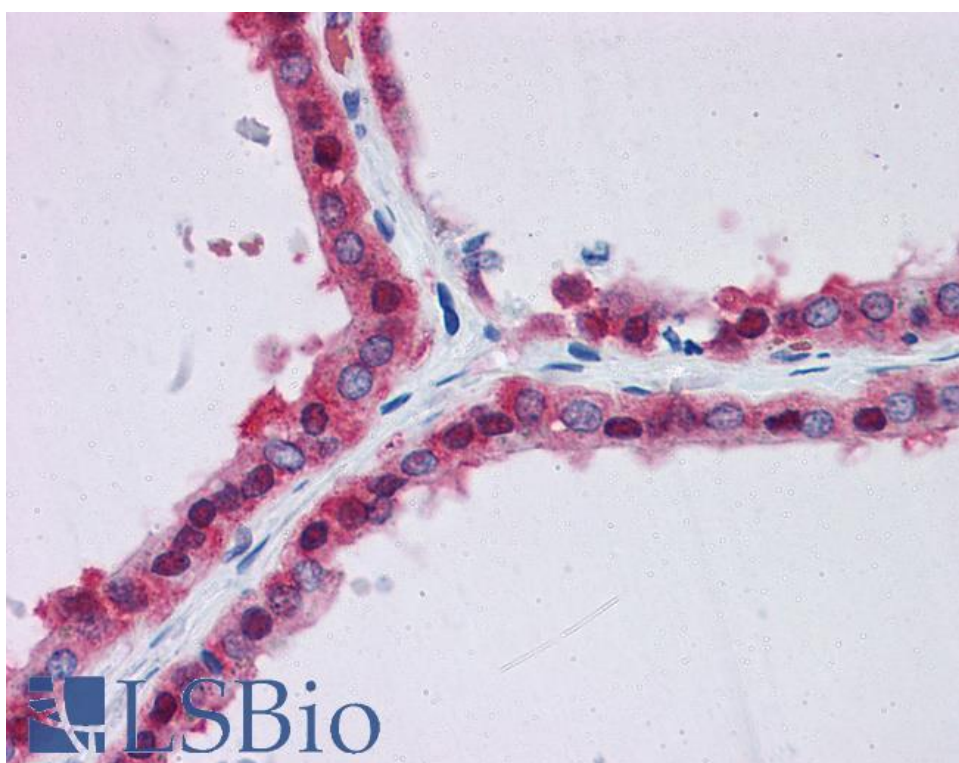
EB09738 (0.3 $\mu$ g/ml) staining of Human Heart lysate (35 $\mu$ g protein in RIPA buffer). Detected by chemiluminescence.



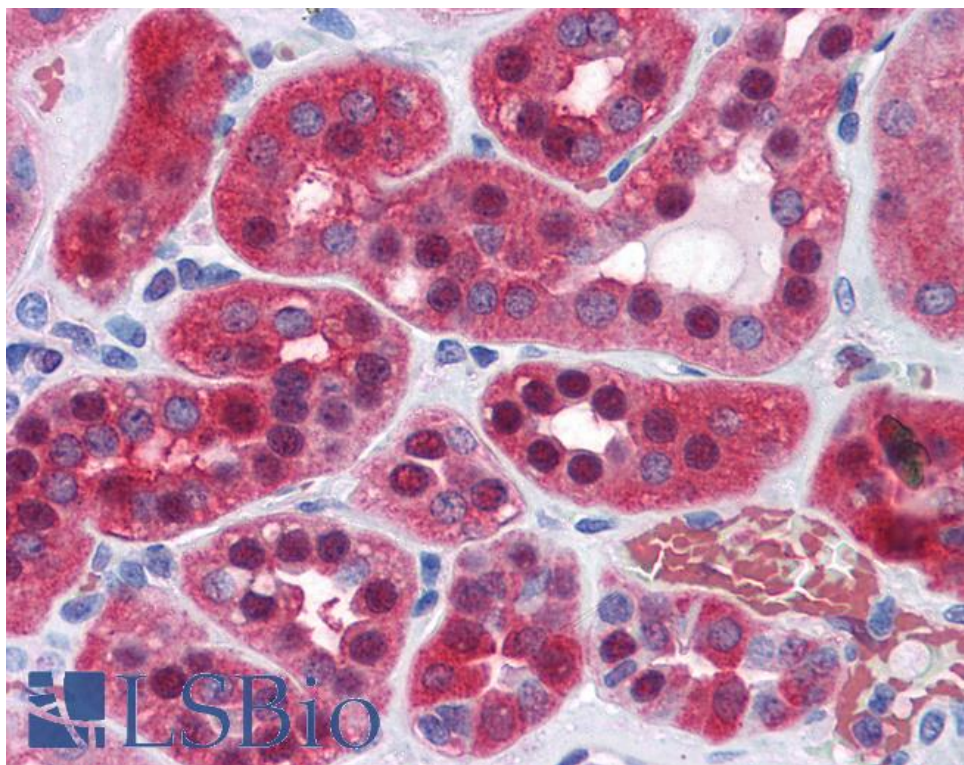
EB09738 (0.05 $\mu$ g/ml) staining of HeLa (A), A431 (B), A549 (C), MCF7 (D), Jurkat (E) and K562 (F) lysates (35 $\mu$ g protein in RIPA buffer). Detected by chemiluminescence.



EB09738 (3.75µg/ml) staining of paraffin embedded Human Testis. Steamed antigen retrieval with citrate buffer pH 6, AP-staining.



EB09738 (3.75µg/ml) staining of paraffin embedded Human Thyroid. Steamed antigen retrieval with citrate buffer Ph 6, AP-staining.



EB09738 (3.75µg/ml) staining of paraffin embedded Human Kidney. Steamed antigen retrieval with citrate buffer pH 6, AP-staining.