

UK Office

Everest Biotech Ltd

Cherwell Innovation Centre
77 Heyford Park
Upper Heyford
Oxfordshire
OX25 5HD
UK

Enquiries:

info@everestbiotech.com

Sales:

sales@everestbiotech.com

Tech support:

support@everestbiotech.com

Tel: +44 (0)1869 238326

www.everestbiotech.com

**Research Use Only. Not for
diagnostic or therapeutic use.**

EB09739 - Goat Anti-GPI / Neuroleukin Antibody

Size: 100µg specific antibody in 200µl



Target Protein

Principal Names: GPI, glucose phosphate isomerase, AMF, GNPI, NLK, PGI, SA-36, autocrine motility factor;, glucose-6-phosphate isomerase, hexose monophosphate isomerase, hexosephosphate isomerase;, neuroleukin, oxoisomerase;, phosphoglucose isomerase, phosphohexomutase, phosphohexose isomerase, phosphosaccharomutase, sperm antigen-36

Official Symbol: GPI

Accession Number(s): NP_000166.2

Human GeneID(s): [2821](#)

Immunogen

Peptide with sequence C-YREHRSELNLR, from the internal region (near N Terminus) of the protein sequence according to NP_000166.2.

Please note the [peptide](#) is available for sale.

Purification and Storage

Purified from goat serum by ammonium sulphate precipitation followed by antigen affinity chromatography using the immunizing peptide.

Supplied at 0.5 mg/ml in Tris saline, 0.02% sodium azide, pH7.3 with 0.5% bovine serum albumin.

Aliquot and store at -20°C. Minimize freezing and thawing.

Applications Tested

Peptide ELISA: antibody detection limit dilution 1:128000.

Western blot: Approx 60kDa band observed in Human Heart lysates (calculated MW of 63.1kDa according to NP_000166.2). Recommended concentration: 0.01-0.03µg/ml.

Primary incubation was hour.

IHC: Paraffin embedded Human Testis, Thyroid and Kidney. Recommended concentration: 3.75µg/ml.

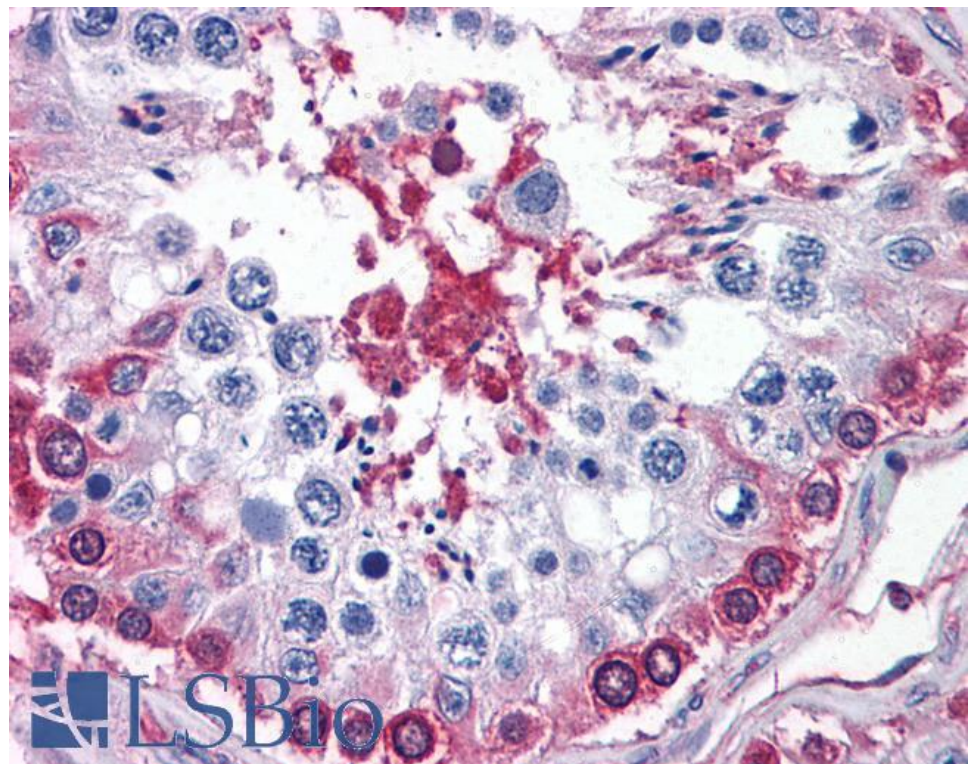
Species Reactivity

Tested: Human

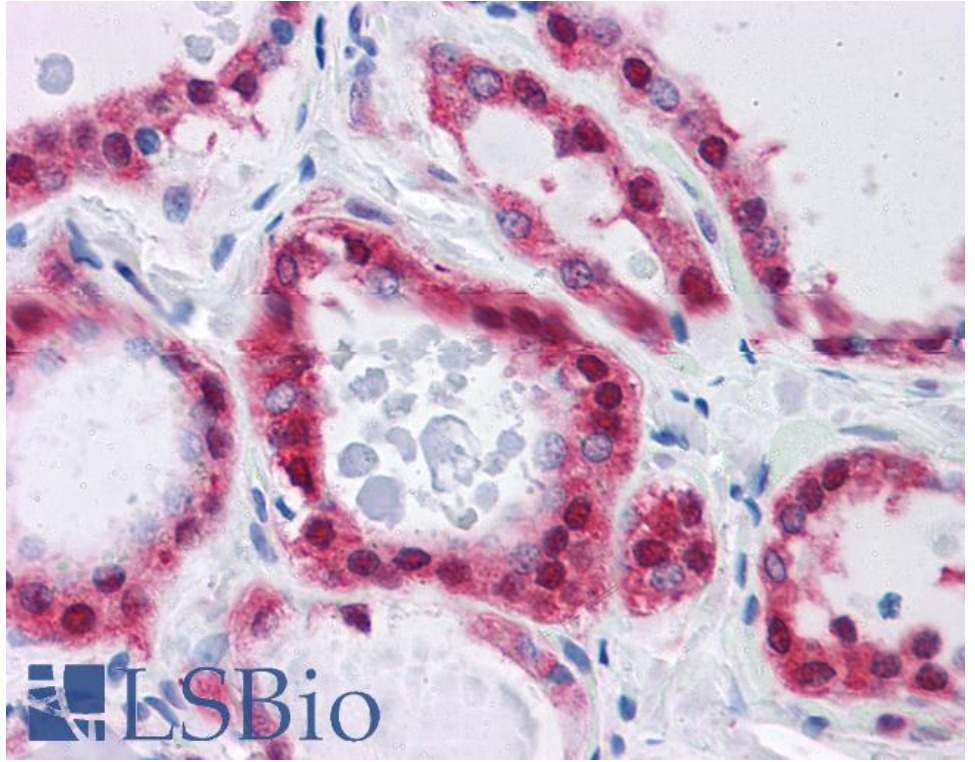
Expected from sequence similarity: Human



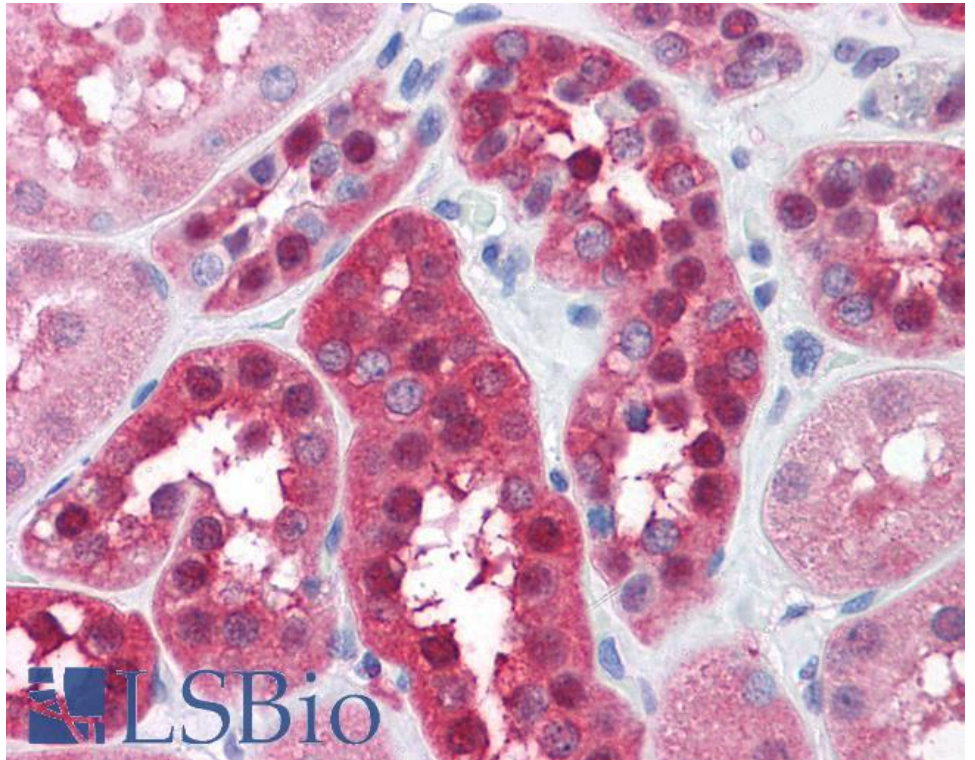
EB09739 (0.01 μ g/ml) staining of Human Heart lysate (35 μ g protein in RIPA buffer). Detected by chemiluminescence.



EB09739 (3.75 μ g/ml) staining of paraffin embedded Human Testis. Steamed antigen retrieval with citrate buffer pH 6, AP-staining.



EB09739 (3.75µg/ml) staining of paraffin embedded Human Thyroid. Steamed antigen retrieval with citrate buffer pH 6, AP-staining.



EB09739 (3.75µg/ml) staining of paraffin embedded Human Kidney. Steamed antigen retrieval with citrate buffer pH 6, AP-staining.