



UK Office

Everest Biotech Ltd

Cherwell Innovation Centre
77 Heyford Park
Upper Heyford
Oxfordshire
OX25 5HD
UK

Enquiries:

info@everestbiotech.com

Sales:

sales@everestbiotech.com

Tech support:

support@everestbiotech.com

Tel: +44 (0)1869 238326

www.everestbiotech.com

**Research Use Only. Not for
diagnostic or therapeutic use.**

EB08628 - Goat Anti-GPR119 Antibody

Size: 100µg specific antibody in 200µl



Target Protein

Principal Names: GPR119, G protein-coupled receptor 119, RP1-2013.4, GPCR2N: MGC119957N: hGPCR2, G-protein coupled receptor 2

Official Symbol: GPR119

Accession Number(s): NP_848566.1

Human GeneID(s): [139760](#)

Immunogen

Peptide with sequence SARNCGPERPRESS, from the C Terminus (near) of the protein sequence according to NP_848566.1.

Please note the [peptide](#) is available for sale.

Purification and Storage

Purified from goat serum by ammonium sulphate precipitation followed by antigen affinity chromatography using the immunizing peptide.

Supplied at 0.5 mg/ml in Tris saline, 0.02% sodium azide, pH7.3 with 0.5% bovine serum albumin.

Aliquot and store at -20°C. Minimize freezing and thawing.

Applications Tested

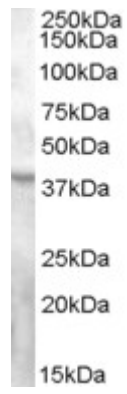
Peptide ELISA: antibody detection limit dilution 1:2000.

Western blot: Approx. 38kDa band observed in Human Ovary lysates (calculated MW of 36.9kDa according to NP_848566.1). Recommended concentration: 0.3-1µg/ml.

Species Reactivity

Tested: Human

Expected from sequence similarity: Human, Mouse, Pig



EB08628 (0.3 μ g/ml) staining of Human Ovary lysate (35 μ g protein in RIPA buffer). Primary incubation was 1 hour. Detected by chemiluminescence.