



UK Office

Everest Biotech Ltd

Cherwell Innovation Centre
77 Heyford Park
Upper Heyford
Oxfordshire
OX25 5HD
UK

Enquiries:

info@everestbiotech.com

Sales:

sales@everestbiotech.com

Tech support:

support@everestbiotech.com

Tel: +44 (0)1869 238326

www.everestbiotech.com

**Research Use Only. Not for
diagnostic or therapeutic use.**

EB08535 - Goat Anti-GPR125 Antibody

Size: 100µg specific antibody in 200µl



Target Protein

Principal Names: GPR125, G protein-coupled receptor 125, PGR21, TEM5L, TEM5-like

Official Symbol: ADGRA3

Accession Number(s): NP_660333.2

Human GeneID(s): [166647](#)

Non-Human GeneID(s): 70693 (mouse)

Immunogen

Peptide with sequence CTNKSASSFKNS, from the internal region of the protein sequence according to NP_660333.2.

Please note the [peptide](#) is available for sale.

Purification and Storage

Purified from goat serum by ammonium sulphate precipitation followed by antigen affinity chromatography using the immunizing peptide.

Supplied at 0.5 mg/ml in Tris saline, 0.02% sodium azide, pH7.3 with 0.5% bovine serum albumin.

Aliquot and store at -20°C. Minimize freezing and thawing.

Applications Tested

Peptide ELISA: antibody detection limit dilution 1:8000.

Western blot: Approx 140kDa band observed in Human Ovary lysates (calculated MW of 146kDa according to NP_660333.2). Recommended concentration: 0.5-1.5µg/ml. Primary incubation was 1 hour. An additional band of unknown identity was also consistently observed at 33kDa. This band was successfully blocked by incubation with the immunising peptide.

IHC: Paraffin embedded Human Brain (Cortex). Recommended concentration: 3.75µg/ml. A customer reported successful results on Human Testis.

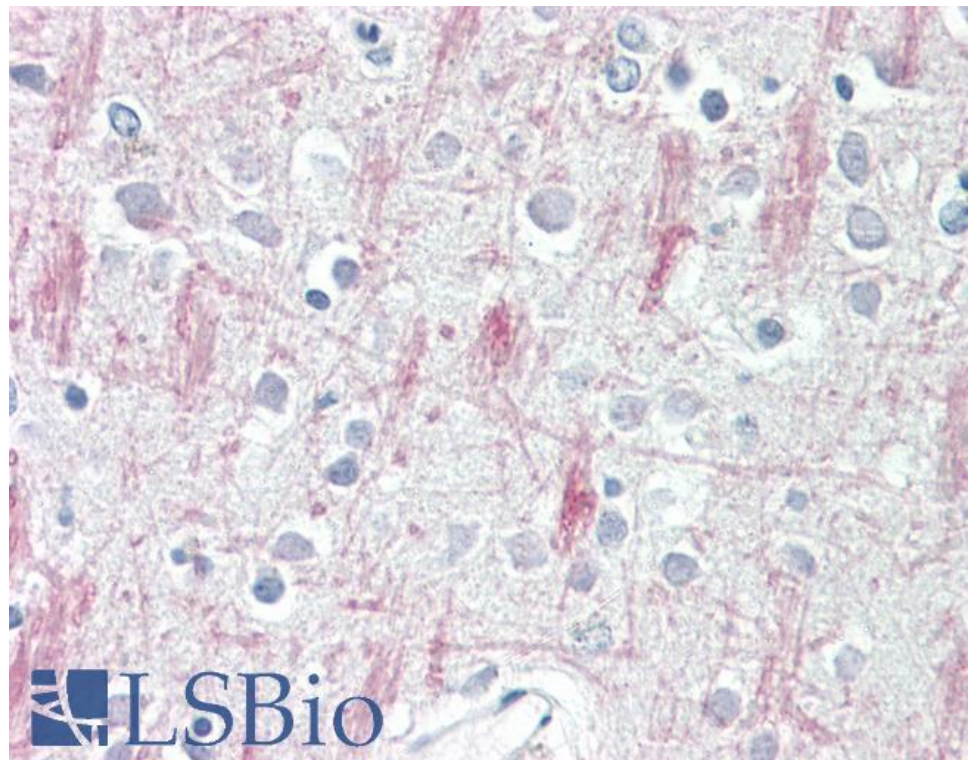
Species Reactivity

Tested: Human

Expected from sequence similarity: Human, Mouse



EB08535 (0.5 μ g/ml) staining of Human Ovary lysate (35 μ g protein in RIPA buffer). Detected by chemiluminescence.



EB08535 (3.75 μ g/ml) staining of paraffin embedded Human Cortex. Steamed antigen retrieval with citrate buffer pH 6, AP-staining.