



International Office

Everest Biotech Ltd

Vector Laboratories, Inc.
6737 Mowry Ave
Newark, CA 94560
United States

Customer Service:

customerservice@vectorlabs.com

Technical Service:

technical@vectorlabs.com

Tel: +1 (800) 227-6666

www.everestbiotech.com

**Research Use Only. Not for
diagnostic or therapeutic use.**

EB08502 - Goat Anti-GPR142 Antibody

Size: 100µg specific antibody in 200µl



Target Protein

Principal Names: GPR142, G protein-coupled receptor 142, PGR2

Official Symbol: GPR142

Accession Number(s): NP_861455.1

Human GeneID(s): [350383](#)

Immunogen

Peptide with sequence C-DMWRDTPSPRTLD, from the internal region of the protein sequence according to NP_861455.1.

Please note the [peptide](#) is available for sale.

Purification and Storage

Purified from goat serum by ammonium sulphate precipitation followed by antigen affinity chromatography using the immunizing peptide.

Supplied at 0.5 mg/ml in Tris saline, 0.02% sodium azide, pH7.3 with 0.5% bovine serum albumin.

Aliquot and store at -20°C. Minimize freezing and thawing.

Applications Tested

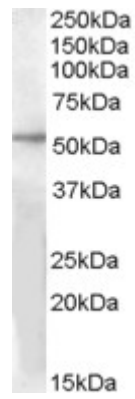
Peptide ELISA: antibody detection limit dilution 1:32000.

Western blot: Approx 50-55kDa band observed in Human Liver lysates (calculated MW of 51.1kDa according to NP_861455.1). Recommended concentration: 1-3µg/ml.

Species Reactivity

Tested: Human

Expected from sequence similarity: Human



EB08502 (1µg/ml) staining of Human Liver lysate (35µg protein in RIPA buffer) with (B) and without (A) blocking with the immunising peptide. Primary incubation was 1 hour. Detected by chemiluminescence.