

## UK Office

### Everest Biotech Ltd

Cherwell Innovation Centre  
77 Heyford Park  
Upper Heyford  
Oxfordshire  
OX25 5HD  
UK

Enquiries:

[info@everestbiotech.com](mailto:info@everestbiotech.com)

Sales:

[sales@everestbiotech.com](mailto:sales@everestbiotech.com)

Tech support:

[support@everestbiotech.com](mailto:support@everestbiotech.com)

Tel: +44 (0)1869 238326

[www.everestbiotech.com](http://www.everestbiotech.com)

**Research Use Only. Not for  
diagnostic or therapeutic use.**

## EB09442 - Goat Anti-GPR81 / FKSG80 Antibody

Size: 100µg specific antibody in 200µl



### Target Protein

**Principal Names:** GPR81, G protein-coupled receptor 81, FKSG80, GPR104, TA-GPCR, G protein-coupled receptor 104, T-cell activation G protein-coupled receptor, putative chemokine receptor

**Official Symbol:** HCAR1

**Accession Number(s):** NP\_115943.1

**Human GeneID(s):** [27198](#)

### Immunogen

Peptide with sequence C-QQLARQARMKKATR, from the Internal region of the protein sequence according to NP\_115943.1.

Please note the [peptide](#) is available for sale.

### Purification and Storage

Purified from goat serum by ammonium sulphate precipitation followed by antigen affinity chromatography using the immunizing peptide.

Supplied at 0.5 mg/ml in Tris saline, 0.02% sodium azide, pH7.3 with 0.5% bovine serum albumin.

Aliquot and store at -20°C. Minimize freezing and thawing.

### Applications Tested

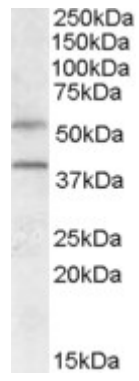
**Peptide ELISA:** antibody detection limit dilution 1:8000.

**Western blot:** Approx 40kDa band observed in Human Liver lysates (calculated MW of 39.3kDa according to NP\_115943.1). Recommended concentration: 0.3-1µg/ml. Primary incubation was 1 hour. An additional band of unknown identity was also consistently observed at 55kDa. This band was successfully blocked by incubation with the immunizing peptide.

### Species Reactivity

**Tested:** Human

**Expected from sequence similarity:** Human, Dog, Pig



EB09442 (0.5g/ml) staining of Human Liver lysate (35µg protein in RIPA buffer). Detected by chemiluminescence.