



UK Office

Everest Biotech Ltd

Cherwell Innovation Centre
77 Heyford Park
Upper Heyford
Oxfordshire
OX25 5HD
UK

Enquiries:

info@everestbiotech.com

Sales:

sales@everestbiotech.com

Tech support:

support@everestbiotech.com

Tel: +44 (0)1869 238326

www.everestbiotech.com

**Research Use Only. Not for
diagnostic or therapeutic use.**

EB07290-T - Goat Anti-GPR94 / TRA1 Antibody - Trial

Size: 20µg specific antibody in 40µl



Target Protein

Principal Names: TRA1, GRP94, tumor rejection antigen (gp96) 1, HGNC:12028, ECGP, GP96, Tumor rejection antigen-1 (gp96), endothelial cell (HBMEC) glycoprotein, glucose regulated protein, 94 kDa, tumor rejection antigen (gp96) 1

Official Symbol: HSP90B1

Accession Number(s): NP_003290.1

Human GeneID(s): [7184](#)

Non-Human GeneID(s): 22027 (mouse), 362862 (rat)

Immunogen

Peptide with sequence C-KEGVKFDSEKTK, from the internal region of the protein sequence according to NP_003290.1.

Please note the [peptide](#) is available for sale.

Purification and Storage

Purified from goat serum by ammonium sulphate precipitation followed by antigen affinity chromatography using the immunizing peptide.

Supplied at 0.5 mg/ml in Tris saline, 0.02% sodium azide, pH7.3 with 0.5% bovine serum albumin.

Aliquot and store at -20°C. Minimize freezing and thawing.

Applications Tested

Peptide ELISA: antibody detection limit dilution 1:8000.

Western blot: Approx. 100kDa band observed in lysates of cell lines HeLa, HepG2 and U2OS and in preliminary testing of NIH3T3 cell lysate and Mouse Liver lysate (calculated MW of 92.5kDa according to Human NP_003290.1). This molecular weight is routinely observed by other sources. Recommended concentration: 0.3-0.5µg/ml. Primary incubation 1 hour at room temperature. **Positive Control:** A batch specific positive control lysate is available for this product. Please contact Sales@everestbiotech.com for availability.

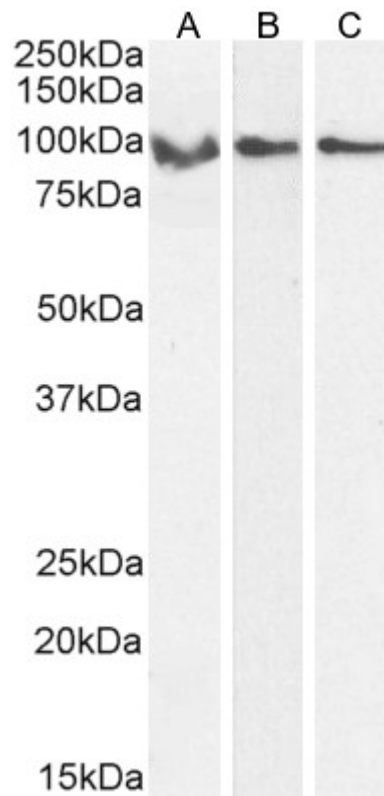
IHC: Paraffin embedded Human Liver. Recommended concentration: 5-7µg/ml.

Flow Cytometry: Flow cytometric analysis of HeLa cells. Recommended concentration: 10ug/ml.

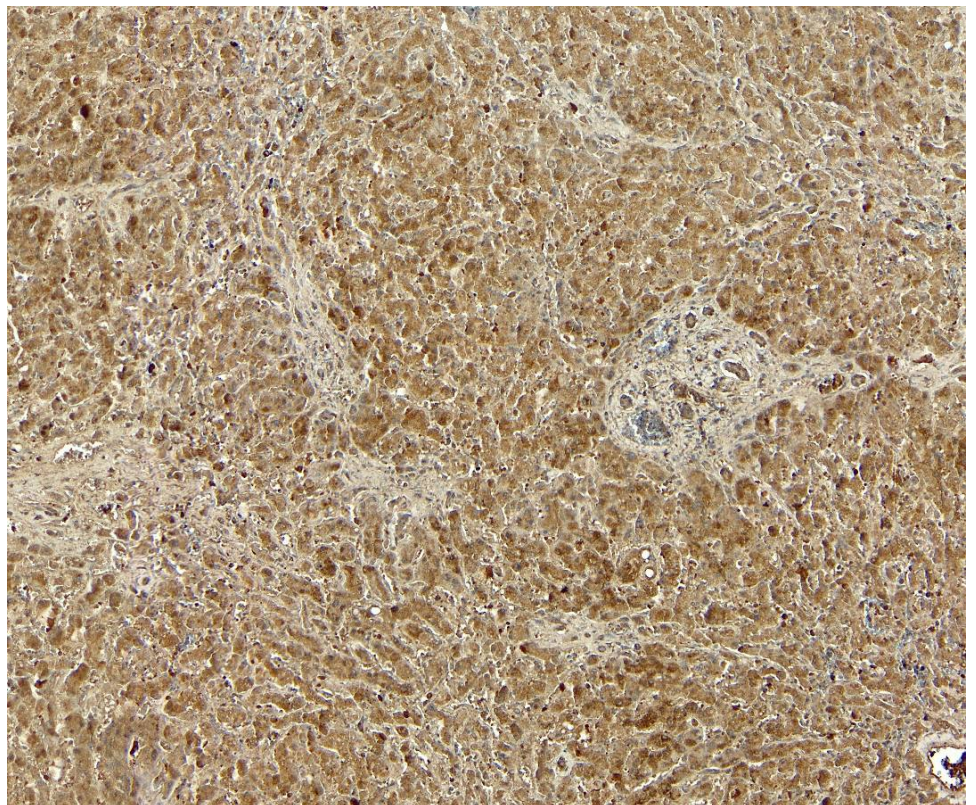
Species Reactivity

Tested: Human

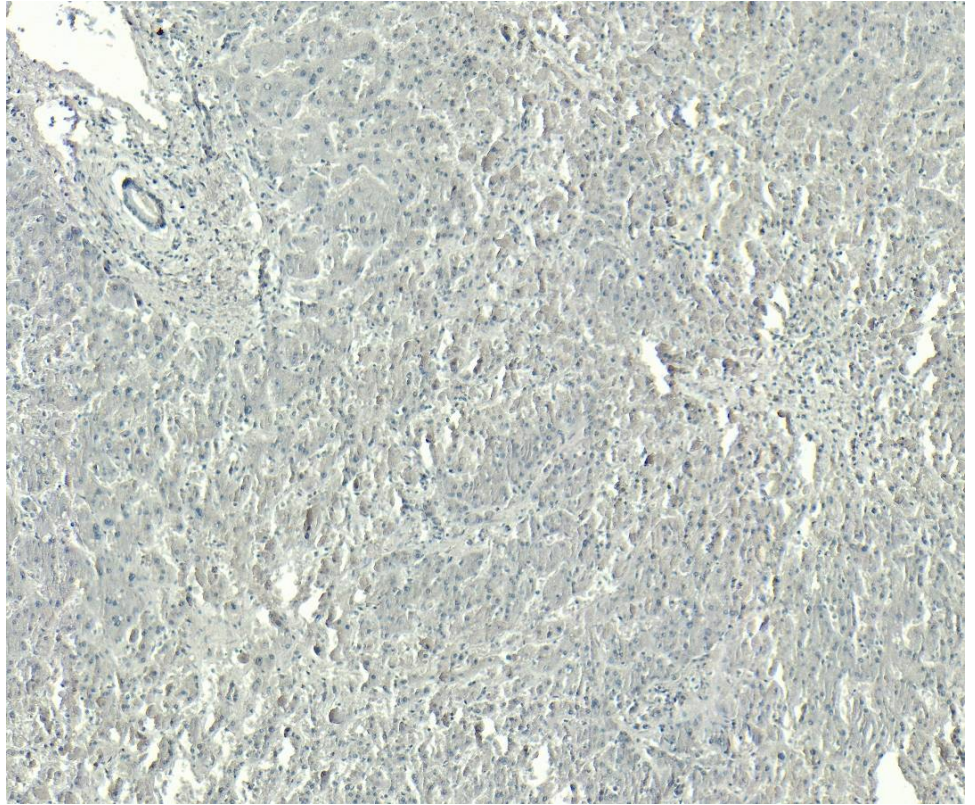
Expected from sequence similarity: Human, Mouse, Rat, Dog, Pig, Cow, Zebrafish



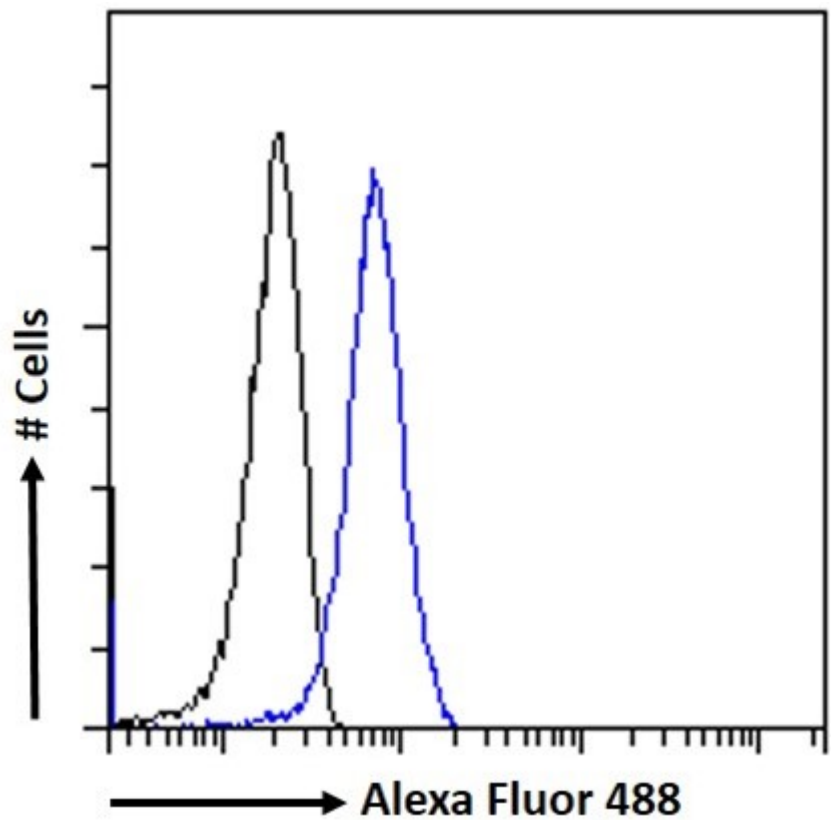
EB07290 (0.5 μ g/ml) staining of HeLa (A) and U2OS (B), and (0.3 μ g/ml) on HepG2 (C), cell lysate (35 μ g protein in RIPA buffer). Detected by chemiluminescence.



EB07290 (6 μ g/ml) staining of paraffin embedded Human Liver. Heat induced antigen retrieval with citrate buffer pH 6, HRP-staining.



EB07290 Negative Control showing staining of paraffin embedded Human Liver, with no primary antibody.



EB07290 Flow cytometric analysis of paraformaldehyde fixed HeLa cells (blue line), permeabilized with 0.5% Triton. Primary incubation 1hr (10ug/ml) followed by Alexa Fluor 488 secondary antibody (1ug/ml). IgG control: Unimmunized goat IgG (black line) followed by Alexa Fluor 488 secondary antibody.