



International Office

Everest Biotech Ltd

Vector Laboratories, Inc.
6737 Mowry Ave
Newark, CA 94560
United States

Customer Service:

customerservice@vectorlabs.com

Technical Service:

technical@vectorlabs.com

Tel: +1 (800) 227-6666

www.everestbiotech.com

**Research Use Only. Not for
diagnostic or therapeutic use.**

EB10209 - Goat Anti-GPRIN3 Antibody

Size: 100µg specific antibody in 200µl



Target Protein

Principal Names: FLJ42625, G protein-regulated inducer of neurite outgrowth 3, GPRIN family member 3, GRIN3, GPRIN3

Official Symbol: GPRIN3

Accession Number(s): NP_938022.2

Human GeneID(s): [285513](#)

Immunogen

Peptide with sequence C-TLEENRQTKT, from the internal region of the protein sequence according to NP_938022.2.

Please note the [peptide](#) is available for sale.

Purification and Storage

Purified from goat serum by ammonium sulphate precipitation followed by antigen affinity chromatography using the immunizing peptide.

Supplied at 0.5 mg/ml in Tris saline, 0.02% sodium azide, pH7.3 with 0.5% bovine serum albumin.

Aliquot and store at -20°C. Minimize freezing and thawing.

Applications Tested

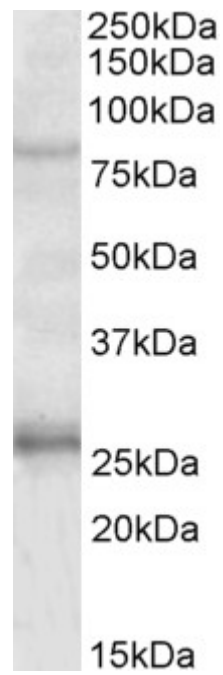
Peptide ELISA: antibody detection limit dilution 1:4000.

Western blot: Approx 80kDa band observed in Human Brain (Hippocampus) lysates (calculated MW of 82.4kDa according to NP_938022.2). Recommended concentration: 1-3µg/ml. An additional band of unknown identity was also consistently observed at 26kDa. This band was successfully blocked by incubation with the immunizing peptide.

Species Reactivity

Tested: Human

Expected from sequence similarity: Human, Cow



EB10209 (1µg/ml) staining of Human Hippocampus lysate (35µg protein in RIPA buffer). Primary incubation was 1 hour. Detected by chemiluminescence.