



## International Office

### Everest Biotech Ltd

Vector Laboratories, Inc.  
6737 Mowry Ave  
Newark, CA 94560  
United States

Customer Service:

[customerservice@vectorlabs.com](mailto:customerservice@vectorlabs.com)

Technical Service:

[technical@vectorlabs.com](mailto:technical@vectorlabs.com)

Tel: +1 (800) 227-6666

[www.everestbiotech.com](http://www.everestbiotech.com)

**Research Use Only. Not for  
diagnostic or therapeutic use.**

## EB05952 - Goat Anti-GPS1 / COPS1 Antibody

Size: 100µg specific antibody in 200µl



### Target Protein

**Principal Names:** GPS1, COPS1, G protein pathway suppressor 1, Arabidopsis FUS6/COP11 homolog, CSN1, MGC71287

**Official Symbol:** GPS1

**Accession Number(s):** NP\_997657.1; NP\_004118.3

**Human GeneID(s):** [2873](#)

**Non-Human GeneID(s):** 209318 (mouse), 117039 (rat)

**Important Comments:** This antibody is expected to recognise isoform 1 (NP\_997657.1) and isoform 2 (NP\_004118.3).

### Immunogen

Peptide with sequence C-PANSQSRMSTNM, from the C Terminus of the protein sequence according to NP\_997657.1; NP\_004118.3.

Please note the [peptide](#) is available for sale.

### Purification and Storage

Purified from goat serum by ammonium sulphate precipitation followed by antigen affinity chromatography using the immunizing peptide.

Supplied at 0.5 mg/ml in Tris saline, 0.02% sodium azide, pH7.3 with 0.5% bovine serum albumin.

Aliquot and store at -20°C. Minimize freezing and thawing.

### Applications Tested

**Peptide ELISA:** antibody detection limit dilution 1:32000.

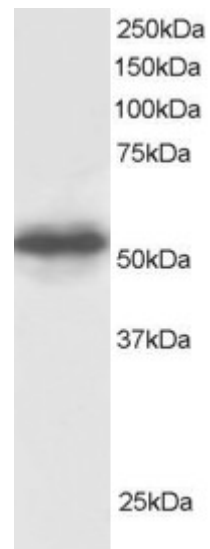
**Western blot:** Approx 55kDa band observed in Human Testis lysate (predicted MW of 58kDa according to NP\_004118). Recommended for use at 0.5µg/ml. Primary incubation was for 1 hour.

**IHC:** Paraffin embedded Human Prostate, Testis and Tonsil. Recommended concentration: 5µg/ml.

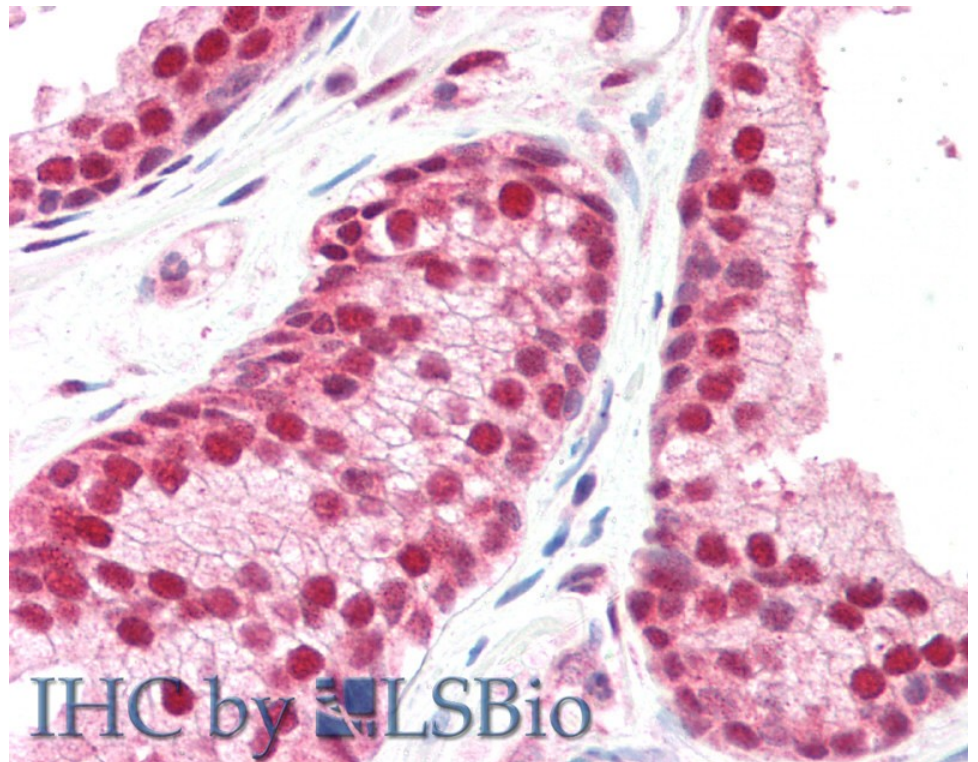
### Species Reactivity

**Tested:** Human

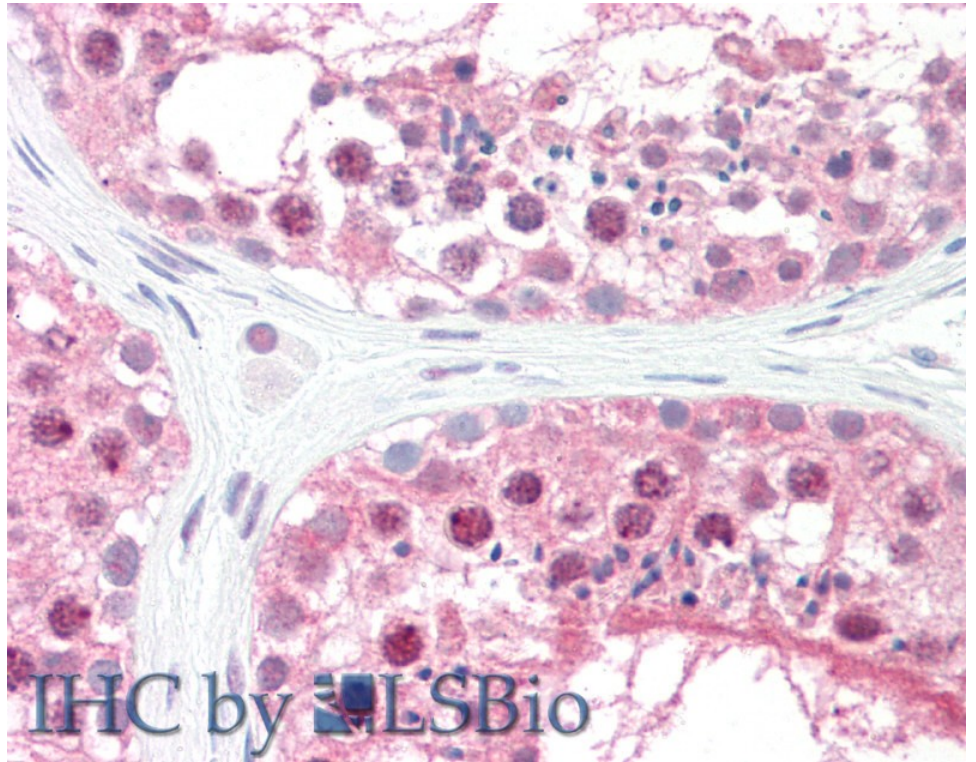
**Expected from sequence similarity:** Human, Mouse, Rat, Dog, Cow



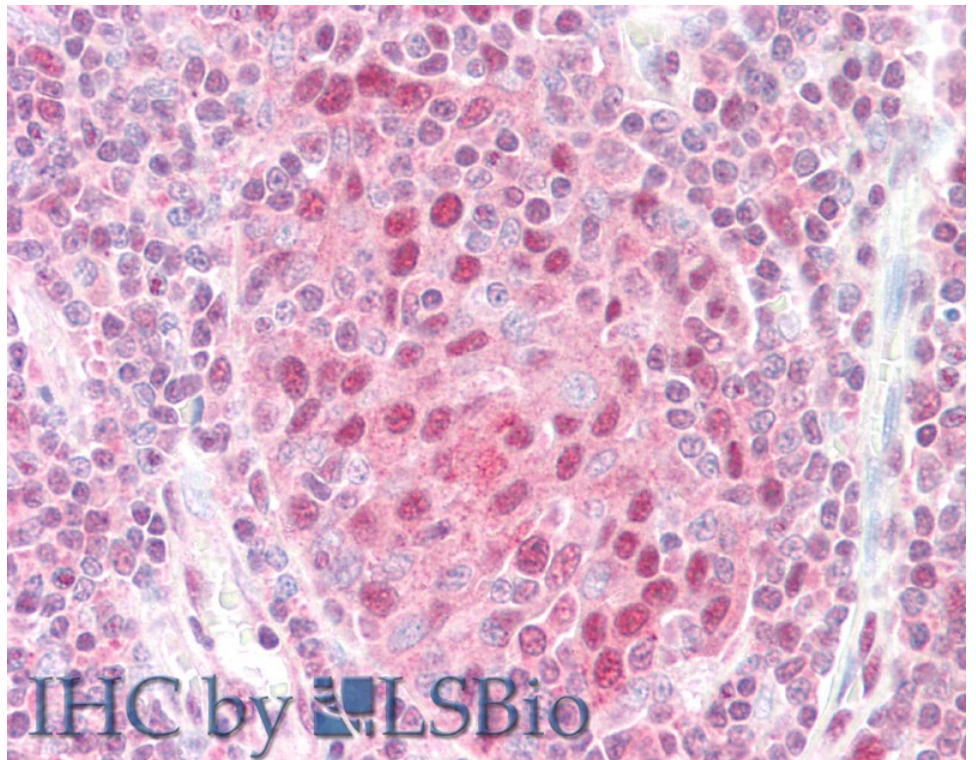
EB05952 staining (0.5µg/ml) of Human Testis lysate (RIPA buffer, 30µg total protein per lane). Detected by chemiluminescence.



EB05952 (5µg/ml) staining of paraffin embedded Human Prostate. Steamed antigen retrieval with citrate buffer pH 6, AP-staining.



EB05952 (5µg/ml) staining of paraffin embedded Human Testis. Steamed antigen retrieval with citrate buffer pH 6, AP-staining.



EB05952 (5µg/ml) staining of paraffin embedded Human Tonsil. Steamed antigen retrieval with citrate buffer pH 6, AP-staining.