



International Office

Everest Biotech Ltd

Vector Laboratories, Inc.
6737 Mowry Ave
Newark, CA 94560
United States

Customer Service:

customerservice@vectorlabs.com

Technical Service:

technical@vectorlabs.com

Tel: +1 (800) 227-6666

www.everestbiotech.com

**Research Use Only. Not for
diagnostic or therapeutic use.**

EB07685 - Goat Anti-GPX3 Antibody

Size: 100µg specific antibody in 200µl



Target Protein

Principal Names: GPX3, glutathione peroxidase 3 (plasma), GPx-P, GSHPx-3, GSHPx-P, extracellular glutathione peroxidase, plasma glutathione peroxidase 3

Official Symbol: GPX3

Accession Number(s): NP_002075.2

Human GeneID(s): [2878](#)

Non-Human GeneID(s): 14778 (mouse), 64317 (rat)

Important Comments: This antibody may cross-react with epididymis-specific GPX5 and olfactory epithelium-specific GPX6

Immunogen

Peptide with sequence C-NQFGKQEPGENSE, from the internal region of the protein sequence according to NP_002075.2.

Please note the [peptide](#) is available for sale.

Purification and Storage

Purified from goat serum by ammonium sulphate precipitation followed by antigen affinity chromatography using the immunizing peptide.

Supplied at 0.5 mg/ml in Tris saline, 0.02% sodium azide, pH7.3 with 0.5% bovine serum albumin.

Aliquot and store at -20°C. Minimize freezing and thawing.

Applications Tested

Peptide ELISA: antibody detection limit dilution 1:8000.

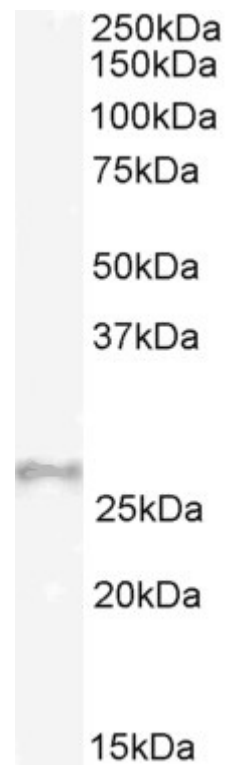
Western blot: Approx 26kDa band observed in Mouse Heart lysates (calculated MW of 27.7kDa according to Mouse NP_001077398.1 [isoform1] and 25.4kDa according to Mouse NP_032187.2 [isoform 2]). Recommended concentration: 1-3µg/ml. Primary incubation 1 hour at room temperature.

IHC: Paraffin embedded Human Kidney. Recommended concentration: 3-5µg/ml.

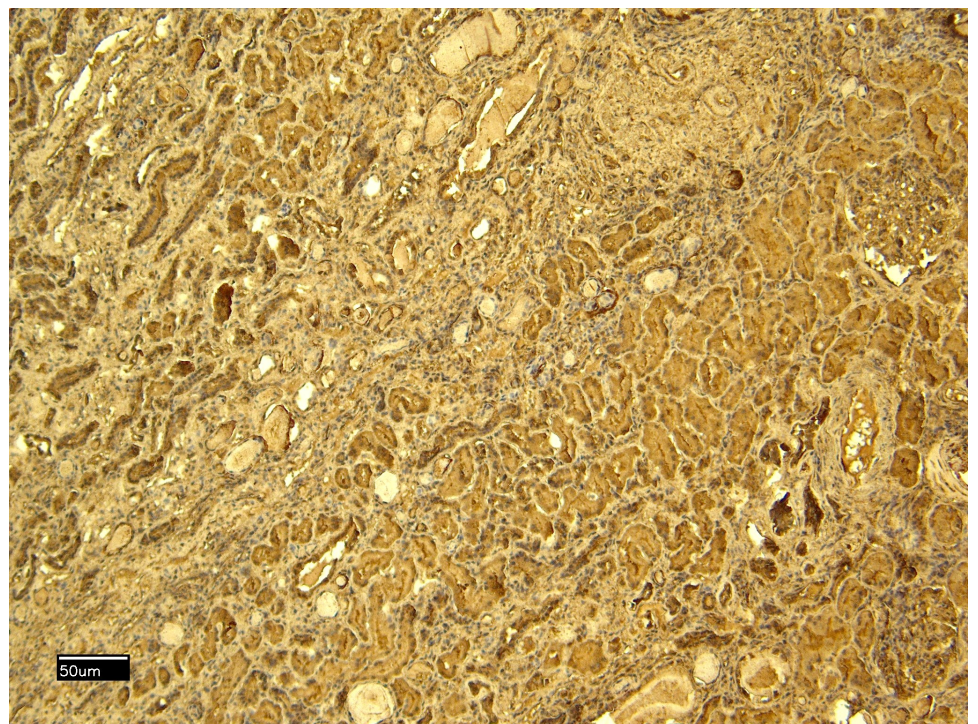
Species Reactivity

Tested: Human, Mouse

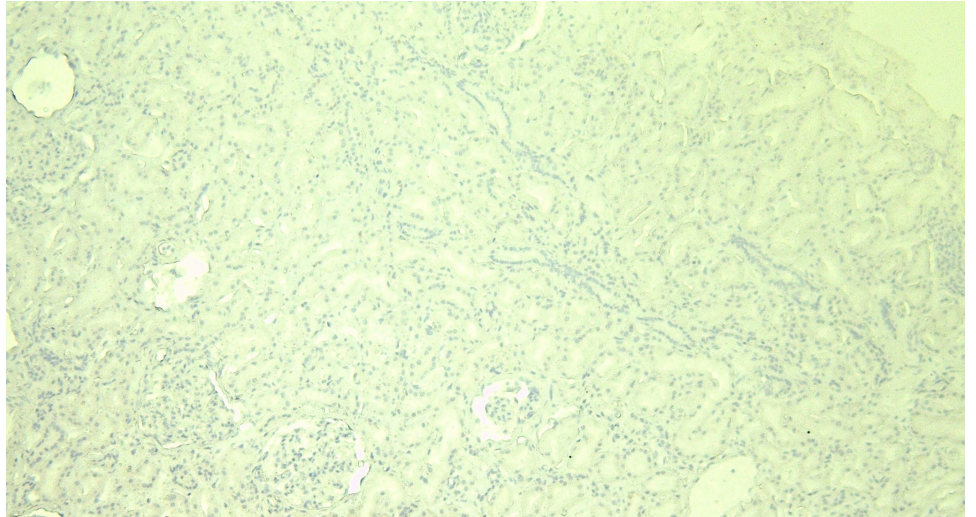
Expected from sequence similarity: Human, Mouse, Rat, Dog, Pig



EB07685 (2 μ g/ml) staining of Mouse Heart lysate (35 μ g protein in RIPA buffer). Detected by chemiluminescence.



EB07685 (4 μ g/ml) staining of paraffin embedded Human Kidney. Heat induced antigen retrieval with citrate buffer pH 6, HRP-staining.



EB07685 Negative Control showing staining of paraffin embedded Human Kidney, with no primary antibody.