



## International Office

### Everest Biotech Ltd

Vector Laboratories, Inc.  
6737 Mowry Ave  
Newark, CA 94560  
United States

Customer Service:

[customerservice@vectorlabs.com](mailto:customerservice@vectorlabs.com)

Technical Service:

[technical@vectorlabs.com](mailto:technical@vectorlabs.com)

Tel: +1 (800) 227-6666

[www.everestbiotech.com](http://www.everestbiotech.com)

**Research Use Only. Not for  
diagnostic or therapeutic use.**

## EB07319 - Goat Anti-GPX7 Antibody

Size: 100µg specific antibody in 200µl



### Target Protein

**Principal Names:** GPX7, glutathione peroxidase 7 [Homo sapiens], HGNC:4559, CL683, FLJ14777, GPX6, NPGPx, non-selenocysteine containing phospholipid hydroperoxide glutathione peroxidase

**Official Symbol:** GPX7

**Accession Number(s):** NP\_056511.2

**Human GeneID(s):** [2882](#)

**Non-Human GeneID(s):** 67305 (mouse), 298376 (rat)

### Immunogen

Peptide with sequence CNQFGQQEPDSNK, from the internal region of the protein sequence according to NP\_056511.2.

Please note the [peptide](#) is available for sale.

### Purification and Storage

Purified from goat serum by ammonium sulphate precipitation followed by antigen affinity chromatography using the immunizing peptide.

Supplied at 0.5 mg/ml in Tris saline, 0.02% sodium azide, pH7.3 with 0.5% bovine serum albumin.

Aliquot and store at -20°C. Minimize freezing and thawing.

### Applications Tested

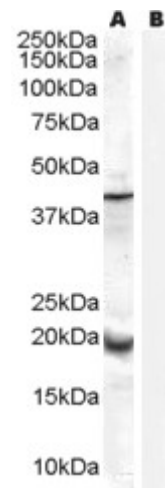
**Peptide ELISA:** antibody detection limit dilution 1:32000.

**Western blot:** Approx 20kDa band observed in Human Prostate lysates (calculated MW of 21.0kDa according to NP\_056511.2). Recommended concentration: 0.3-1µg/ml. An additional band of unknown identity was also consistently observed at 40kDa. This band was successfully blocked by incubation with the immunising peptide.

### Species Reactivity

**Tested:** Human

**Expected from sequence similarity:** Human



EB07319 (0.3µg/ml) staining of Human Prostate lysate (35µg protein in RIPA buffer) with (B) and without (A) blocking with the immunising peptide. Primary incubation was 1 hour. Detected by chemiluminescence.