



## UK Office

### Everest Biotech Ltd

Cherwell Innovation Centre  
77 Heyford Park  
Upper Heyford  
Oxfordshire  
OX25 5HD  
UK

Enquiries:

[info@everestbiotech.com](mailto:info@everestbiotech.com)

Sales:

[sales@everestbiotech.com](mailto:sales@everestbiotech.com)

Tech support:

[support@everestbiotech.com](mailto:support@everestbiotech.com)

Tel: +44 (0)1869 238326

Fax: +44 (0)1869 238327

## US Office

### Everest Biotech c/o Abcore

405 Maple Street, Suite A106  
Ramona,  
CA 92065  
USA

Inquiries:

[info@everestbiotech.com](mailto:info@everestbiotech.com)

Sales:

[usasales@everestbiotech.com](mailto:usasales@everestbiotech.com)

Tech support:

[support@everestbiotech.com](mailto:support@everestbiotech.com)

Tel: 888-320-4628 (toll-free)

Fax: 888-841-9041

[www.everestbiotech.com](http://www.everestbiotech.com)

**Research Use Only. Not for  
diagnostic or therapeutic use.**

## EB08934 - Goat Anti-Granulin / GRN Antibody

Size: 100µg specific antibody in 200µl



## Target Protein

**Principal Names:** GRN, granulin, GEP, GP88, PCDGF, PEPI, PGRN, PC cell-derived growth factor, acrogranin, granulin-epithelin, proepithelin, progranulin

**Official Symbol:** GRN

**Accession Number(s):** NP\_002078.1

**Human GeneID(s):** [2896](#)

## Immunogen

Peptide with sequence QSKCLSKENATTD, from the internal region of the protein sequence according to NP\_002078.1.

Please note the [peptide](#) is available for sale.

## Purification and Storage

Purified from goat serum by ammonium sulphate precipitation followed by antigen affinity chromatography using the immunizing peptide.

Supplied at 0.5 mg/ml in Tris saline, 0.02% sodium azide, pH7.3 with 0.5% bovine serum albumin.

Aliquot and store at -20°C. Minimize freezing and thawing.

## Applications Tested

**Peptide ELISA:** antibody detection limit dilution 1:1000.

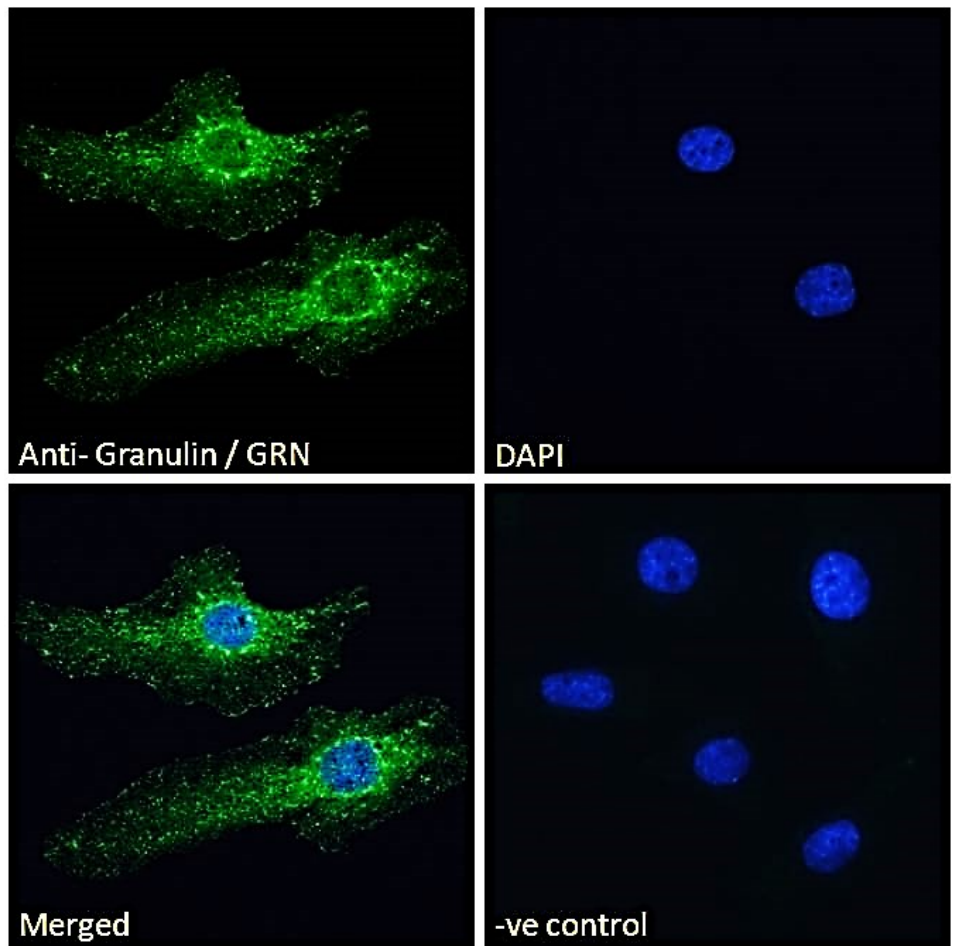
**Western blot:** Preliminary experiments showed a band at approx 65kDa in Human Bone Marrow and Testes lysates after 2µg/ml antibody staining (calculated MW of 63.5kDa according to NP\_002078.1). Primary incubation 1 hour at room temperature.

**Immunofluorescence:** Strong expression of the protein seen in the vesicles/cytoplasm of HeLa cells. Recommended concentration: 10µg/ml.

## Species Reactivity

**Tested:** Human

**Expected from sequence similarity:** Human



EB08934 Immunofluorescence analysis of paraformaldehyde fixed HeLa cells, permeabilized with 0.15% Triton. Primary incubation 1hr (10ug/ml) followed by Alexa Fluor 488 secondary antibody (2ug/ml), showing ER/vesicle staining. The nuclear stain is DAPI (blue). Negative control: Unimmunized goat IgG (10ug/ml) followed by Alexa Fluor 488 secondary antibody (2ug/ml).