



International Office

Everest Biotech Ltd

Vector Laboratories, Inc.
6737 Mowry Ave
Newark, CA 94560
United States

Customer Service:

customerservice@vectorlabs.com

Technical Service:

technical@vectorlabs.com

Tel: +1 (800) 227-6666

www.everestbiotech.com

**Research Use Only. Not for
diagnostic or therapeutic use.**

EB05077 - Goat Anti-GRAP Antibody

Size: 100µg specific antibody in 200µl



Target Protein

Principal Names: GRAP, GRB2-related adaptor protein, growth factor receptor-bound protein 2-related adaptor protein, MGC64880

Official Symbol: GRAP

Accession Number(s): NP_006604.1

Human GeneID(s): [10750](#)

Non-Human GeneID(s): 71520 (mouse)

Immunogen

Peptide with sequence C-GFFPRSYVQPVHL, from the C Terminus of the protein sequence according to NP_006604.1.

Please note the [peptide](#) is available for sale.

Purification and Storage

Purified from goat serum by ammonium sulphate precipitation followed by antigen affinity chromatography using the immunizing peptide.

Supplied at 0.5 mg/ml in Tris saline, 0.02% sodium azide, pH7.3 with 0.5% bovine serum albumin.

Aliquot and store at -20°C. Minimize freezing and thawing.

Applications Tested

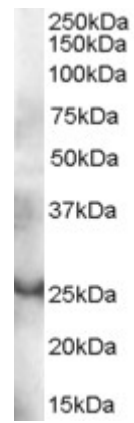
Peptide ELISA: antibody detection limit dilution 1:32000.

Western blot: Approx 26kDa band observed in human thymus lysates (calculated MW of 25.3kDa according to NP_006604.1). Recommended concentration: 0.3-1µg/ml.

Species Reactivity

Tested: Human

Expected from sequence similarity: Human, Mouse, Rat, Cow



EB05077 (0.3 μ g/ml) staining of human thymus lysate (35 μ g protein in RIPA buffer). Primary incubation was 1 hour. Detected by chemiluminescence.