



UK Office

Everest Biotech Ltd

Cherwell Innovation Centre
77 Heyford Park
Upper Heyford
Oxfordshire
OX25 5HD
UK

Enquiries:

info@everestbiotech.com

Sales:

sales@everestbiotech.com

Tech support:

support@everestbiotech.com

Tel: +44 (0)1869 238326

www.everestbiotech.com

**Research Use Only. Not for
diagnostic or therapeutic use.**

EB05113 - Goat Anti-GRAP2 / GRID / Grf40 Antibody

Size: 100µg specific antibody in 200µl



Target Protein

Principal Names: GRAP2, GRID, P38, GADS, GRPL, GrbX, Mona, GRB2L, GRBLG, GRAP-2, GRB2-related adaptor protein 2, GRB-2-like protein, SH3-SH2-SH3 adaptor molecule, growth factor receptor-binding protein, GRB2-related protein with insert domain, hematopoietic cell-associated adaptor protein GRPL, growth factor receptor-bound protein 2-related adaptor protein 2, RP3-370M22.1, Grf40, Mona

Official Symbol: GRAP2

Accession Number(s): NP_004801.1

Human GeneID(s): [9402](#)

Non-Human GeneID(s): 17444 (mouse)

Immunogen

Peptide with sequence C-GLFPANYVAPMTR, from the C Terminus of the protein sequence according to NP_004801.1.

Please note the [peptide](#) is available for sale.

Purification and Storage

Purified from goat serum by ammonium sulphate precipitation followed by antigen affinity chromatography using the immunizing peptide.

Supplied at 0.5 mg/ml in Tris saline, 0.02% sodium azide, pH7.3 with 0.5% bovine serum albumin.

Aliquot and store at -20°C. Minimize freezing and thawing.

Applications Tested

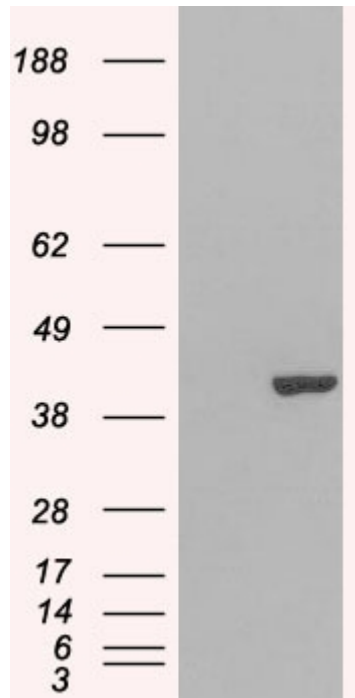
Peptide ELISA: antibody detection limit dilution 1:32000.

Western blot: Approx 38kDa band observed lysates of cell line Jurkat (calculated MW of 37.9kDa according to NP_004801.1). In transfected HEK293 transiently expressing GRAP2 a band of approx. 40kDa is observed. This band is not observed in the non-transfected HEK293. Recommended concentration: 1-3µg/ml.

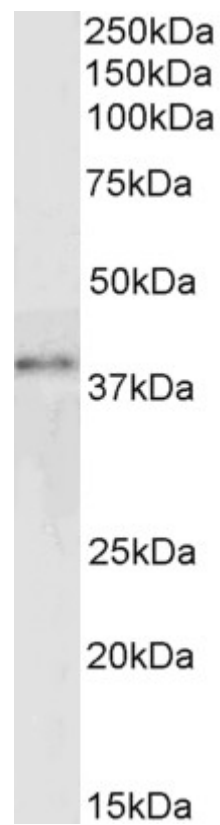
Species Reactivity

Tested: Human

Expected from sequence similarity: Human, Mouse, Rat, Dog, Pig, Cow



HEK293 overexpressing GRAP2 (RC206546) and probed with EB05113 (mock transfection in first lane), tested by Origene.



EB05113 (0.3µg/ml) staining of Jurkat lysate (30µg protein in RIPA buffer). Primary incubation was 1 hour. Detected by chemiluminescence.