



## International Office

### Everest Biotech Ltd

Vector Laboratories, Inc.  
6737 Mowry Ave  
Newark, CA 94560  
United States

Customer Service:

[customerservice@vectorlabs.com](mailto:customerservice@vectorlabs.com)

Technical Service:

[technical@vectorlabs.com](mailto:technical@vectorlabs.com)

Tel: +1 (800) 227-6666

[www.everestbiotech.com](http://www.everestbiotech.com)

**Research Use Only. Not for  
diagnostic or therapeutic use.**

## EB07546 - Goat Anti-GRHR / LRHR Antibody

Size: 100µg specific antibody in 200µl



### Target Protein

**Principal Names:** GNRHR, LRHR, gonadotropin-releasing hormone receptor, GNRHR1, GRHR, LHRHR, gonadotropin-releasing hormone (type 1) receptor 1, leutinizing hormone releasing hormone receptor, leutinizing-releasing hormone receptor, luliberin receptor, type I GnRH receptor

**Official Symbol:** GNRHR

**Accession Number(s):** NP\_000397.1; NP\_001012781.1

**Human GeneID(s):** [2798](#)

### Immunogen

Peptide with sequence C-QKWTQKKEKGK, from the internal region of the protein sequence according to NP\_000397.1; NP\_001012781.1.

Please note the [peptide](#) is available for sale.

### Purification and Storage

Purified from goat serum by ammonium sulphate precipitation followed by antigen affinity chromatography using the immunizing peptide.

Supplied at 0.5 mg/ml in Tris saline, 0.02% sodium azide, pH7.3 with 0.5% bovine serum albumin.

Aliquot and store at -20°C. Minimize freezing and thawing.

### Applications Tested

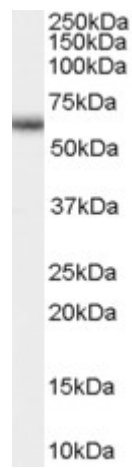
**Peptide ELISA:** antibody detection limit dilution 1:32000.

**Western blot:** Approx 60kDa band observed in Human lysates of Peripheral Blood Mononucleocytes (calculated MW of 37.7kDa according to NP\_000397.1). This molecular weight is routinely observed by other sources. Recommended concentration: 0.5-1.5µg/ml. Primary incubation was 1 hour.

### Species Reactivity

**Tested:** Human

**Expected from sequence similarity:** Human, Dog



EB07546 (0.5µg/ml) staining of Human Peripheral Blood Mononucleocyte lysate (35µg protein in RIPA buffer).  
Detected by chemiluminescence.