



## UK Office

### Everest Biotech Ltd

Cherwell Innovation Centre  
77 Heyford Park  
Upper Heyford  
Oxfordshire  
OX25 5HD  
UK

Enquiries:

[info@everestbiotech.com](mailto:info@everestbiotech.com)

Sales:

[sales@everestbiotech.com](mailto:sales@everestbiotech.com)

Tech support:

[support@everestbiotech.com](mailto:support@everestbiotech.com)

Tel: +44 (0)1869 238326

Fax: +44 (0)1869 238327

## US Office

### Everest Biotech c/o Abcore

405 Maple Street, Suite A106  
Ramona,  
CA 92065  
USA

Inquiries:

[info@everestbiotech.com](mailto:info@everestbiotech.com)

Sales:

[usasales@everestbiotech.com](mailto:usasales@everestbiotech.com)

Tech support:

[support@everestbiotech.com](mailto:support@everestbiotech.com)

Tel: 888-320-4628 (toll-free)

Fax: 888-841-9041

[www.everestbiotech.com](http://www.everestbiotech.com)

**Research Use Only. Not for  
diagnostic or therapeutic use.**

## EB11313 - Goat Anti-GRIN2A (aa211-224) Antibody

Size: 100µg specific antibody in 200µl

### Target Protein

**Principal Names:** glutamate [NMDA] receptor subunit epsilon-1, glutamate receptor, ionotropic, N-methyl D-aspartate 2A, hNR2A, NMDA receptor subtype 2A, NMDAR2A, N-methyl D-aspartate receptor subtype 2A, N-methyl-D-aspartate receptor channel, subunit epsilon-1, N-methyl-D-aspartate receptor subunit 2A, NR2A, OTTHUMP00000160135, OTTHUMP00000174531, GRIN2A

**Official Symbol:** GRIN2A

**Accession Number(s):** NP\_000824.1; NP\_001127880.1

**Human GeneID(s):** [2903](#)

**Non-Human GeneID(s):** 14811 (mouse), 24409 (rat)

**Important Comments:** This antibody is expected to recognize both reported isoforms (NP\_000824.1; NP\_001127880.1). The immunizing peptide represents part of an extra-cellular domain. Reported variants represent identical protein: NP\_001127879.1, NP\_000824.1

### Immunogen

Peptide with sequence C-EDAKTQVQLKKIHS, from the internal region of the protein sequence according to NP\_000824.1; NP\_001127880.1.

Please note the [peptide](#) is available for sale.

### Purification and Storage

Purified from goat serum by ammonium sulphate precipitation followed by antigen affinity chromatography using the immunizing peptide.

Supplied at 0.5 mg/ml in Tris saline, 0.02% sodium azide, pH7.3 with 0.5% bovine serum albumin.

Aliquot and store at -20°C. Minimize freezing and thawing.

### Applications Tested

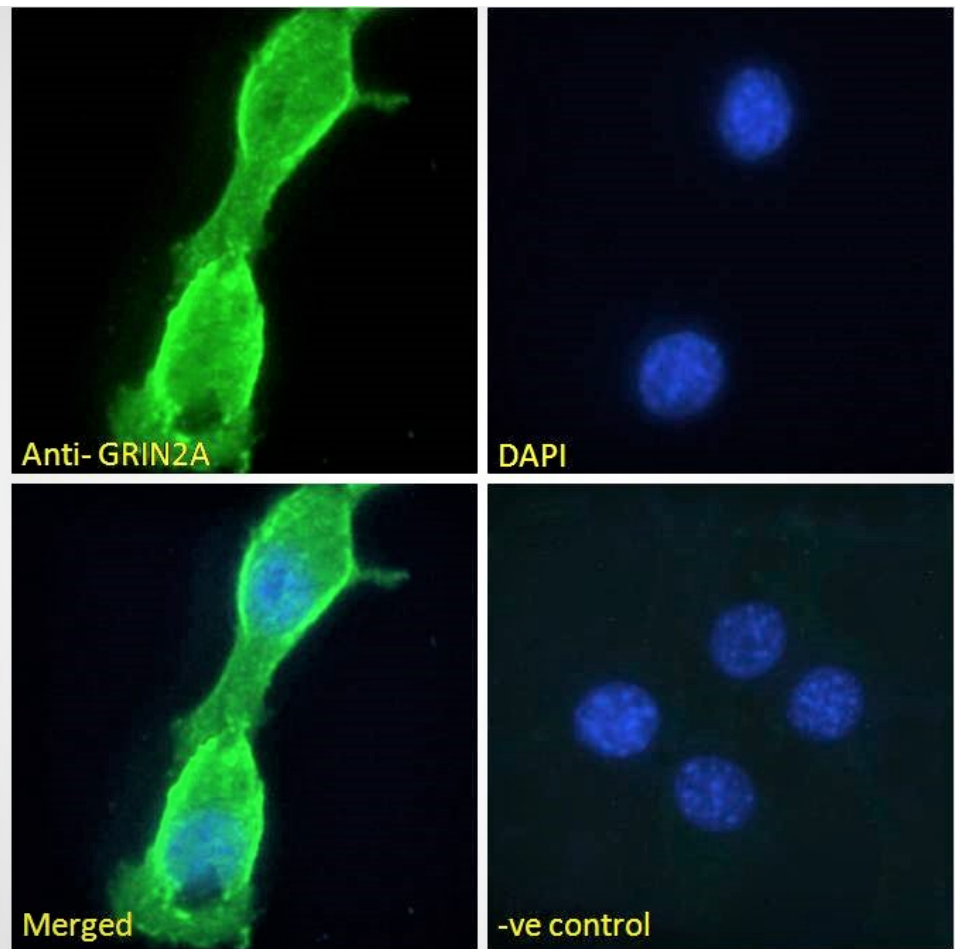
**Peptide ELISA:** antibody detection limit dilution 1:16000.

**Immunofluorescence:** Strong expression of the protein seen in the plasma membrane of NIH3T3 cells. Recommended concentration: 10µg/ml.

### Species Reactivity

**Tested:** Mouse

**Expected from sequence similarity:** Human, Mouse, Rat, Dog



EB11313 Immunofluorescence analysis of paraformaldehyde fixed NIH3T3 cells, permeabilized with 0.15% Triton. Primary incubation 1hr (10ug/ml) followed by Alexa Fluor 488 secondary antibody (2ug/ml), showing membrane staining. The nuclear stain is DAPI (blue). Negative control: Unimmunized goat IgG (10ug/ml) followed by Alexa Fluor 488 secondary antibody (2ug/ml).