

## UK Office

### Everest Biotech Ltd

Cherwell Innovation Centre  
77 Heyford Park  
Upper Heyford  
Oxfordshire  
OX25 5HD  
UK

Enquiries:

[info@everestbiotech.com](mailto:info@everestbiotech.com)

Sales:

[sales@everestbiotech.com](mailto:sales@everestbiotech.com)

Tech support:

[support@everestbiotech.com](mailto:support@everestbiotech.com)

Tel: +44 (0)1869 238326

[www.everestbiotech.com](http://www.everestbiotech.com)

**Research Use Only. Not for  
diagnostic or therapeutic use.**

## EB10214 - Goat Anti-GRM2 Antibody

Size: 100µg specific antibody in 200µl



### Target Protein

**Principal Names:** GLUR2, glutamate metabotropic receptor 2, glutamate receptor homolog, glutamate receptor, metabotropic 2, GPRC1B, mGlu2, MGLUR2, GRM2

**Official Symbol:** GRM2

**Accession Number(s):** NP\_000830.2; NP\_001123535.1

**Human GeneID(s):** [2912](#)

**Non-Human GeneID(s):** 108068 (mouse), 24415 (rat)

**Important Comments:** This antibody is expected to recognize both isoforms (NP\_000830.2; NP\_001123535.1).

### Immunogen

Peptide with sequence C-KETAPERREV, from the internal region of the protein sequence according to NP\_000830.2; NP\_001123535.1.

Please note the [peptide](#) is available for sale.

### Purification and Storage

Purified from goat serum by ammonium sulphate precipitation followed by antigen affinity chromatography using the immunizing peptide.

Supplied at 0.5 mg/ml in Tris saline, 0.02% sodium azide, pH7.3 with 0.5% bovine serum albumin.

Aliquot and store at -20°C. Minimize freezing and thawing.

### Applications Tested

**Peptide ELISA:** antibody detection limit dilution 1:16000.

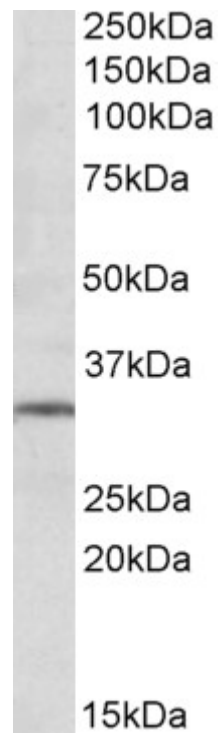
**Western blot:** Approx 30kDa band observed in Human Brain (Hippocampus) lysates (calculated MW of 27.5kDa according to NP\_001123535.1). Recommended concentration: 1-3µg/ml.

**IHC:** In paraffin embedded Human Cerebral Cortex shows membranous/axonal staining. Recommended concentration, 3-5µg/ml.

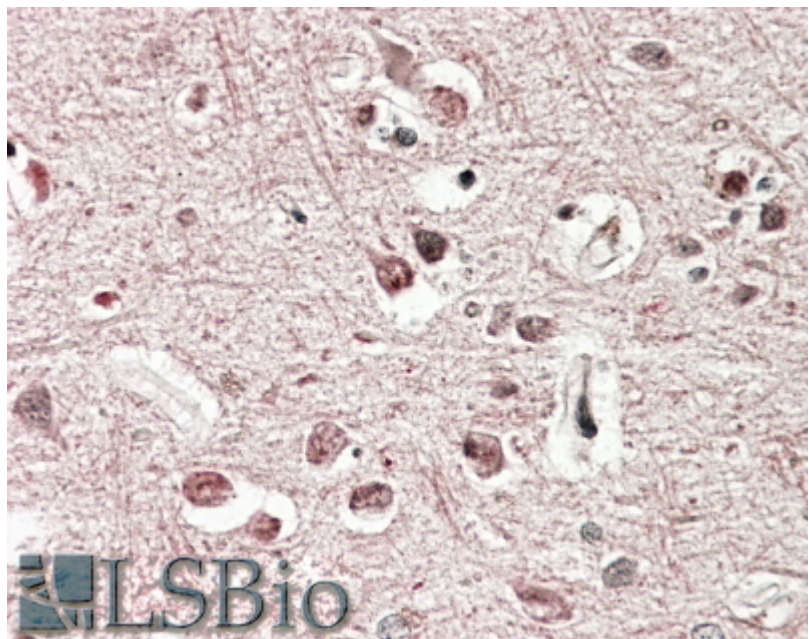
### Species Reactivity

**Tested:** Human

**Expected from sequence similarity:** Human, Mouse, Rat, Dog, Cow



EB10214 (1 $\mu$ g/ml) staining of Human Hippocampus lysate (35 $\mu$ g protein in RIPA buffer). Primary incubation was 1 hour. Detected by chemiluminescence.



EB10214 (3.8 $\mu$ g/ml) staining of paraffin embedded Human Cerebral Cortex. Steamed antigen retrieval with citrate buffer pH 6, AP-staining.