

International Office

Everest Biotech Ltd

Vector Laboratories, Inc.
6737 Mowry Ave
Newark, CA 94560
United States

Customer Service:

customerservice@vectorlabs.com

Technical Service:

technical@vectorlabs.com

Tel: +1 (800) 227-6666

www.everestbiotech.com

**Research Use Only. Not for
diagnostic or therapeutic use.**

EB13063 - Goat Anti-GSTA3 Antibody

Size: 100µg specific antibody in 200µl



Target Protein

Principal Names: GSTA3, glutathione S-transferase alpha 3, GSTA3-3, GTA3, GST class-alpha member 3, S-(hydroxyalkyl)glutathione lyase A3, glutathione S-alkyltransferase A3, glutathione S-aralkyltransferase A3, glutathione S-aryltransferase A3, glutathione S-transferase A3

Official Symbol: GSTA3

Accession Number(s): NP_000838.3

Human GeneID(s): [2940](#)

Immunogen

Peptide with sequence C-RKPPADAKALE, from the C Terminus of the protein sequence according to NP_000838.3.

Please note the [peptide](#) is available for sale.

Purification and Storage

Purified from goat serum by ammonium sulphate precipitation followed by antigen affinity chromatography using the immunizing peptide.

Supplied at 0.5 mg/ml in Tris saline, 0.02% sodium azide, pH7.3 with 0.5% bovine serum albumin.

Aliquot and store at -20°C. Minimize freezing and thawing.

Applications Tested

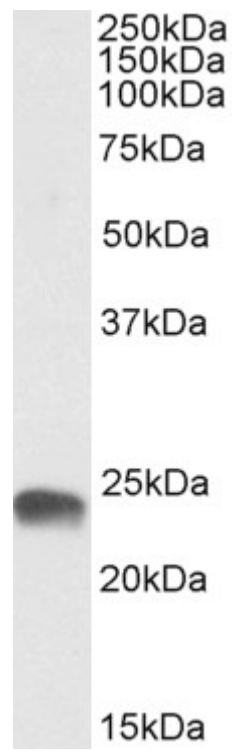
Peptide ELISA: antibody detection limit dilution 1:128000.

Western blot: Approx 24kDa band observed in Human Placenta lysates (calculated MW of 25.3kDa according to NP_000838.3). Recommended concentration: 0.1-0.3µg/ml.

Species Reactivity

Tested: Human

Expected from sequence similarity: Human



EB13063 (0.3 μ g/ml) staining of Human Placenta lysate (35 μ g protein in RIPA buffer). Primary incubation was 1 hour. Detected by chemiluminescence.