



International Office

Everest Biotech Ltd

Vector Laboratories, Inc.
6737 Mowry Ave
Newark, CA 94560
United States

Customer Service:

customerservice@vectorlabs.com

Technical Service:

technical@vectorlabs.com

Tel: +1 (800) 227-6666

www.everestbiotech.com

**Research Use Only. Not for
diagnostic or therapeutic use.**

EB10727 - Goat Anti-Gsta3/Gsta5/Gst Yc2 (rat) Antibody

Size: 100µg specific antibody in 200µl



Target Protein

Principal Names: Gsta5, glutathione S-transferase Yc2 subunit, MGC112704, Yc2, GST A5-5, GST Yc2, glutathione S-transferase Yc-2, glutathione S-transferase alpha-5, glutathione S-transferase A3, Gsta3, glutathione S-transferase alpha 3, glutathione S-transferase alpha 3

Official Symbol: Gsta3

Accession Number(s): NP_001009920.1

Non-Human GeneID(s): 14859 (mouse), 494500 (rat)

Important Comments: Reported variants represent identical protein: NP_001009920.1, NP_001153211.1. Please note that this antibody is expected to cross-react to the homologous Mouse protein Gsta3

Immunogen

Peptide with sequence C-EMDPGIVDNFLLK, from the internal region of the protein sequence according to NP_001009920.1.

Please note the [peptide](#) is available for sale.

Purification and Storage

Purified from goat serum by ammonium sulphate precipitation followed by antigen affinity chromatography using the immunizing peptide.

Supplied at 0.5 mg/ml in Tris saline, 0.02% sodium azide, pH7.3 with 0.5% bovine serum albumin.

Aliquot and store at -20°C. Minimize freezing and thawing.

Applications Tested

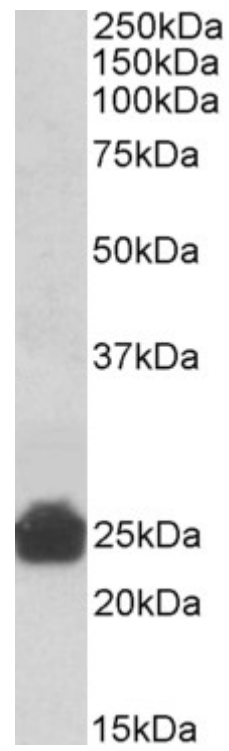
Peptide ELISA: antibody detection limit dilution 1:32000.

Western blot: Approx 25kDa band observed in Mouse and Rat lysates (calculated MW of 25.3kDa according to NP_001009920.1. Recommended concentration: 0.3-1µg/ml.

Species Reactivity

Tested: Mouse, Rat

Expected from sequence similarity: Mouse, Rat



EB10727 (0.3 μ g/ml) staining of Rat Liver lysate (35 μ g protein in RIPA buffer). Primary incubation was 1 hour.
Detected by chemiluminescence.