

## UK Office

### Everest Biotech Ltd

Cherwell Innovation Centre  
77 Heyford Park  
Upper Heyford  
Oxfordshire  
OX25 5HD  
UK

Enquiries:

[info@everestbiotech.com](mailto:info@everestbiotech.com)

Sales:

[sales@everestbiotech.com](mailto:sales@everestbiotech.com)

Tech support:

[support@everestbiotech.com](mailto:support@everestbiotech.com)

Tel: +44 (0)1869 238326

[www.everestbiotech.com](http://www.everestbiotech.com)

**Research Use Only. Not for  
diagnostic or therapeutic use.**

## EB06606 - Goat Anti-GSTM1 / GSTM2 Antibody

Size: 100µg specific antibody in 200µl



### Target Protein

**Principal Names:** GSTM1, GSTM2, MU, H-B, GST1, GTH4, GTM1, MU-1, GSTM1-1, MGC26563, GSTM1a-1a, GSTM1b-1b, glutathione S-transferase M1, HB subunit 4, GST class-mu 1, glutathione S-aryltransferase, glutathione S-alkyltransferase, glutathione S-transferase, Mu-1, glutathione S-aralkyltransferase, S-(hydroxyalkyl)glutathione lyase, glutathione S-transferase mu 1, glutathione S-transferase mu 2 (muscle), GST4, GSTM, GSTM2-2, GTHMUS, MGC117303, GST class-mu 2, GST, muscle, S-(hydroxyalkyl)glutathione lyase M2, glutathione S-alkyltransferase M2, glutathione S-aralkyltransferase M2, glutathione S-aryltransferase M2, glutathione S-transferase 4, glutathione S-transferase M1, glutathione S-transferase M2 (muscle), glutathione S-transferase mu 2

**Official Symbol:** GSTM1 / GSTM2

**Accession Number(s):** NP\_000552.2; NP\_666533.1; NP\_000839.1

**Human GenelD(s):** [2944](#) , [2946](#)

**Important Comments:** This antibody is expected to recognise both reported variants of human GSTM1 protein (NP\_000552.2; NP\_666533.1) and will also recognise human GSTM2 protein (NP\_000839.1).

### Immunogen

Peptide with sequence CVFSKMAVWGNK, from the C Terminus of the protein sequence according to NP\_000552.2; NP\_666533.1; NP\_000839.1.

Please note the [peptide](#) is available for sale.

### Purification and Storage

Purified from goat serum by ammonium sulphate precipitation followed by antigen affinity chromatography using the immunizing peptide.

Supplied at 0.5 mg/ml in Tris saline, 0.02% sodium azide, pH7.3 with 0.5% bovine serum albumin.

Aliquot and store at -20°C. Minimize freezing and thawing.

### Applications Tested

**Peptide ELISA:** antibody detection limit dilution 1:1000.

**Western blot:** Approx 26kDa band observed in Human Liver and Human Lung lysates (calculated MW of 25.7kDa according to NP\_000552.2, and NP\_000839.1).

Recommended concentration: 1-3µg/ml.

### Species Reactivity

**Tested:** Human

**Expected from sequence similarity:** Human

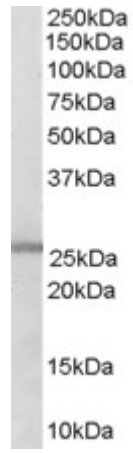
### Specific Reference

**This antibody has been successfully used in the following paper:**

Endo K, Uno S, Seki T, Ariga T, Kusumi Y, Mitsumata M, Yamada S, Makishima M. Inhibition of aryl hydrocarbon receptor transactivation and DNA adduct formation by CYP1 isoform-selective metabolic deactivation of benzo[a]pyrene.

Toxicol Appl Pharmacol. 2008 Jul 15;230(2):135-43. Epub 2008 Feb 21.

PMID: 18372000



EB06606 (0.3 $\mu$ g/ml) staining of Human Lung lysate (35 $\mu$ g protein in RIPA buffer). Primary incubation was 1 hour.  
Detected by chemiluminescence.