



## International Office

### Everest Biotech Ltd

Vector Laboratories, Inc.  
6737 Mowry Ave  
Newark, CA 94560  
United States

Customer Service:

[customerservice@vectorlabs.com](mailto:customerservice@vectorlabs.com)

Technical Service:

[technical@vectorlabs.com](mailto:technical@vectorlabs.com)

Tel: +1 (800) 227-6666

[www.everestbiotech.com](http://www.everestbiotech.com)

**Research Use Only. Not for  
diagnostic or therapeutic use.**

## EB08464 - Goat Anti-GSTM3 Antibody

Size: 100µg specific antibody in 200µl



### Target Protein

**Principal Names:** GSTM3, glutathione S-transferase M3 (brain), GST5N: GSTB, GSTM3-3, GTM3, MGC3310, MGC3704, GST class-mu 3, S-(hydroxyalkyl)glutathione lyase M3, brain GSTN: brain type mu-glutathione S-transferase, glutathione S-alkyltransferase M3, glutathione S-aralkyltransferase M3, glutathione S-aryltransferase M3, glutathione S-transferase M3, glutathione S-transferase, Mu-3

**Official Symbol:** GSTM3

**Accession Number(s):** NP\_000840.2

**Human GeneID(s):** [2947](#)

### Immunogen

Peptide with sequence RTQLIRLCYSSDHE, from the internal region of the protein sequence according to NP\_000840.2.

Please note the [peptide](#) is available for sale.

### Purification and Storage

Purified from goat serum by ammonium sulphate precipitation followed by antigen affinity chromatography using the immunizing peptide.

Supplied at 0.5 mg/ml in Tris saline, 0.02% sodium azide, pH7.3 with 0.5% bovine serum albumin.

Aliquot and store at -20°C. Minimize freezing and thawing.

### Applications Tested

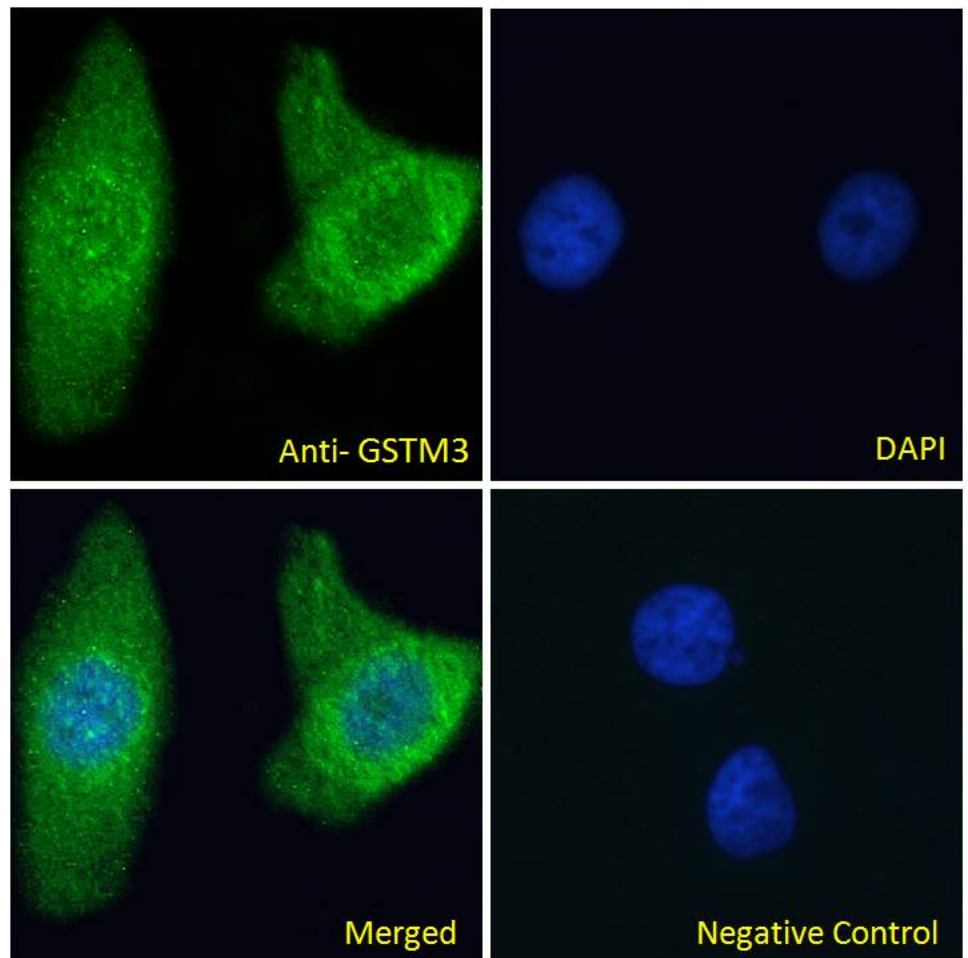
**Peptide ELISA:** antibody detection limit dilution 1:4000.

**Immunofluorescence:** Strong expression of the protein seen in the mitochondria/cytoplasm of HeLa cells. Recommended concentration: 10µg/ml.

### Species Reactivity

**Tested:** Human

**Expected from sequence similarity:** Human



EB08464 Immunofluorescence analysis of paraformaldehyde fixed HeLa cells, permeabilized with 0.15% Triton. Primary incubation 1hr (10ug/ml) followed by Alexa Fluor 488 secondary antibody (2ug/ml), showing Mitochondria/cytoplasmic staining. The nuclear stain is DAPI (blue). Negative control: Unimmunized goat IgG (10ug/ml) followed by Alexa Fluor 488 secondary antibody (2ug/ml).