



UK Office

Everest Biotech Ltd

Cherwell Innovation Centre
77 Heyford Park
Upper Heyford
Oxfordshire
OX25 5HD
UK

Enquiries:

info@everestbiotech.com

Sales:

sales@everestbiotech.com

Tech support:

support@everestbiotech.com

Tel: +44 (0)1869 238326

Fax: +44 (0)1869 238327

US Office

Everest Biotech c/o Abcore

405 Maple Street, Suite A106
Ramona,
CA 92065
USA

Inquiries:

info@everestbiotech.com

Sales:

usasales@everestbiotech.com

Tech support:

support@everestbiotech.com

Tel: 888-320-4628 (toll-free)

Fax: 888-841-9041

www.everestbiotech.com

**Research Use Only. Not for
diagnostic or therapeutic use.**

EB08464 - Goat Anti-GSTM3 Antibody

Size: 100µg specific antibody in 200µl



Target Protein

Principal Names: GSTM3, glutathione S-transferase M3 (brain), GST5N: GSTB, GSTM3-3, GTM3, MGC3310, MGC3704, GST class-mu 3, S-(hydroxyalkyl)glutathione lyase M3, brain GSTN: brain type mu-glutathione S-transferase, glutathione S-alkyltransferase M3, glutathione S-aralkyltransferase M3, glutathione S-aryltransferase M3, glutathione S-transferase M3, glutathione S-transferase, Mu-3

Official Symbol: GSTM3

Accession Number(s): NP_000840.2

Human GeneID(s): [2947](#)

Immunogen

Peptide with sequence RTQLIRLCYSSDHE, from the internal region of the protein sequence according to NP_000840.2.

Please note the [peptide](#) is available for sale.

Purification and Storage

Purified from goat serum by ammonium sulphate precipitation followed by antigen affinity chromatography using the immunizing peptide.

Supplied at 0.5 mg/ml in Tris saline, 0.02% sodium azide, pH7.3 with 0.5% bovine serum albumin.

Aliquot and store at -20°C. Minimize freezing and thawing.

Applications Tested

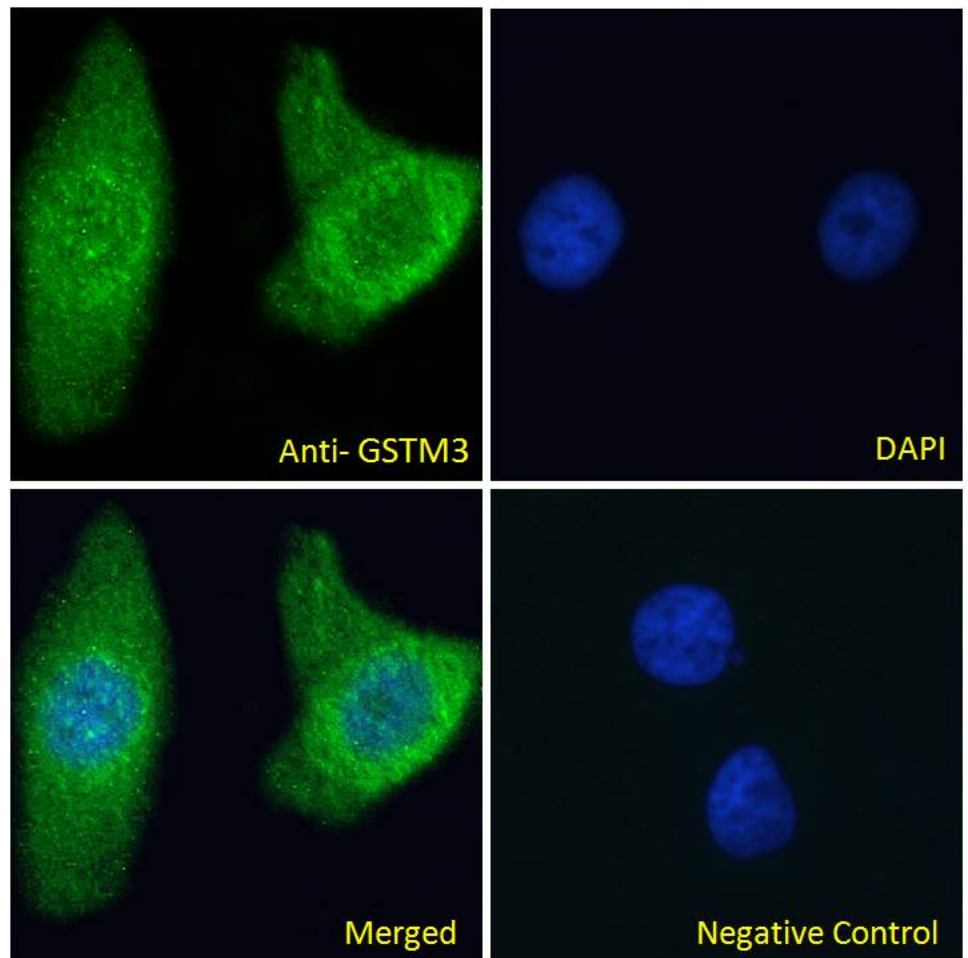
Peptide ELISA: antibody detection limit dilution 1:4000.

Immunofluorescence: Strong expression of the protein seen in the mitochondria/cytoplasm of HeLa cells. Recommended concentration: 10µg/ml.

Species Reactivity

Tested: Human

Expected from sequence similarity: Human



EB08464 Immunofluorescence analysis of paraformaldehyde fixed HeLa cells, permeabilized with 0.15% Triton. Primary incubation 1hr (10ug/ml) followed by Alexa Fluor 488 secondary antibody (2ug/ml), showing Mitochondria/cytoplasmic staining. The nuclear stain is DAPI (blue). Negative control: Unimmunized goat IgG (10ug/ml) followed by Alexa Fluor 488 secondary antibody (2ug/ml).