

International Office

Everest Biotech Ltd

Vector Laboratories, Inc.
6737 Mowry Ave
Newark, CA 94560
United States

Customer Service:

customerservice@vectorlabs.com

Technical Service:

technical@vectorlabs.com

Tel: +1 (800) 227-6666

www.everestbiotech.com

**Research Use Only. Not for
diagnostic or therapeutic use.**

EB12411 - Goat Anti-GSTO1 Antibody

Size: 100µg specific antibody in 200µl



Target Protein

Principal Names: GSTO1, glutathione S-transferase omega 1, GSTO 1-1, GSTTLp28, P28, SPG-R, GSTO-1, MMA(V) reductase, S-(Phenacyl)glutathione reductase, glutathione S-transferase omega 1-1, glutathione S-transferase omega-1, glutathione-S-transferase like, glutathione-depe

Official Symbol: GSTO1

Accession Number(s): NP_004823.1; NP_001177931.1; NP_001177932.1

Human GeneID(s): [9446](#)

Important Comments: This antibody is expected to recognize all reported isoforms (NP_004823.1; NP_001177931.1; NP_001177932.1).

Immunogen

Peptide with sequence C-KEDPTVSALLTSEKD, from the internal region (near C terminus) of the protein sequence according to NP_004823.1; NP_001177931.1; NP_001177932.1.

Please note the [peptide](#) is available for sale.

Purification and Storage

Purified from goat serum by ammonium sulphate precipitation followed by antigen affinity chromatography using the immunizing peptide.

Supplied at 0.5 mg/ml in Tris saline, 0.02% sodium azide, pH7.3 with 0.5% bovine serum albumin.

Aliquot and store at -20°C. Minimize freezing and thawing.

Applications Tested

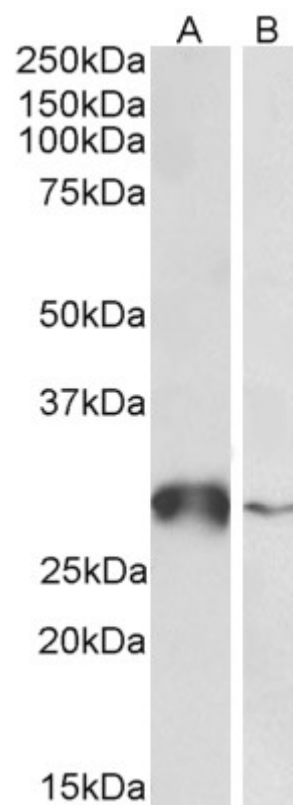
Peptide ELISA: antibody detection limit dilution 1:128000.

Western blot: Approx 28kDa band observed in Human Liver and in Peripheral Blood Mononucleocytes lysates (calculated MW of 27.6kDa according to NP_004823.1).
Recommended concentration: 0.5-2µg/ml.

Species Reactivity

Tested: Human

Expected from sequence similarity: Human



EB12411 (0.5 μ g/ml) staining of Human Liver (A) and Peripheral Blood Lymphocytes (B) lysates (35 μ g protein in RIPA buffer). Primary incubation was 1 hour. Detected by chemiluminescence.