

UK Office

Everest Biotech Ltd

Cherwell Innovation Centre
77 Heyford Park
Upper Heyford
Oxfordshire
OX25 5HD
UK

Enquiries:

info@everestbiotech.com

Sales:

sales@everestbiotech.com

Tech support:

support@everestbiotech.com

Tel: +44 (0)1869 238326

Fax: +44 (0)1869 238327

US Office

Everest Biotech c/o Abcore

405 Maple Street, Suite A106
Ramona,
CA 92065
USA

Inquiries:

info@everestbiotech.com

Sales:

usasales@everestbiotech.com

Tech support:

support@everestbiotech.com

Tel: 888-320-4628 (toll-free)

Fax: 888-841-9041

www.everestbiotech.com

**Research Use Only. Not for
diagnostic or therapeutic use.**

EB05631 - Goat Anti-GTRAP3-18 / JWA Antibody

Size: 100µg specific antibody in 200µl



Target Protein

Principal Names: ARL6IP5, GTRAP3-18, JWA, ADP-ribosylation-like factor 6 interacting protein 5, DERP11, HSPC127, PRAF3, addicisin, hp22, jmx, PRA1 domain family 3, cytoskeleton related vitamin A responsive protein, dermal papilla derived protein 11, glutamate transporter EEAC1-associated protein, putative MAPK activating protein PM27

Official Symbol: ARL6IP5

Accession Number(s): NP_006398.1

Human GeneID(s): [10550](#)

Important Comments: C2 passed G1 as 20kDa in HBR; C2P2 fail in _enh; try HBAM, HBCR, HBFC BP08/10/2021; 22+48kDa in HBAM-B104, faint 48kDa in HBAM-B201, multiple bands in > 37kDa in both HBCR, multiple bands include 22kDa in both HBFC, opt in HBAM-B201 at 2ug/ml, rpt HBAM-B104 at 1ug/ml; try HBCC BP25/10/2021, 21kDa+multiple bands in HBAM-B201, 21+28+48kDa in HBAM, 55kDa in HBCC-E101, 50kDa in HBCC-E201, try both HBAMat 1ug/ml + peptide next try A431 and U251BP27/10/2021; 22+28+48kDa in both HBAM-B201 and blocked completely, 48+37+30kDa in A43-C10403, 70kDa in A43-C10404 (shrt exp), 60-70kDa in both U251 (shrt exp); HBAM as optimistic but in blocking; over to Jane BP01/11/2021

Immunogen

Peptide with sequence C-NRLTDYISKVKE, from the C Terminus of the protein sequence according to NP_006398.1.

Please note the [peptide](#) is available for sale.

Purification and Storage

Purified from goat serum by ammonium sulphate precipitation followed by antigen affinity chromatography using the immunizing peptide.

Supplied at 0.5 mg/ml in Tris saline, 0.02% sodium azide, pH7.3 with 0.5% bovine serum albumin.

Aliquot and store at -20°C. Minimize freezing and thawing.

Applications Tested

Peptide ELISA: antibody detection limit dilution 1:32000.

Western blot: Approx 22kDa band observed in Human Cerebellum lysates and in lysates of cell line K562 (calculated MW of 21.6kDa according to NP_006398.1). An additional band of 75-100kDa was also observed in some lysates and was successfully blocked by incubation with the immunizing peptide. Recommended concentration: 0.3-1µg/ml. Primary incubation 1 hour at room temperature.

IHC: Paraffin embedded Human Tonsil and Small Intestine. Recommended concentration: 3.75µg/ml.

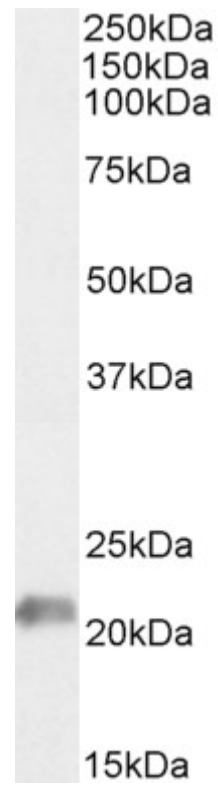
Immunofluorescence: Strong expression of the protein seen in the ER/ plasma membranes and cytoplasm of A431 cells. Recommended concentration: 10µg/ml.

Flow Cytometry: Flow cytometric analysis of A431 cells. Recommended concentration: 10ug/ml.

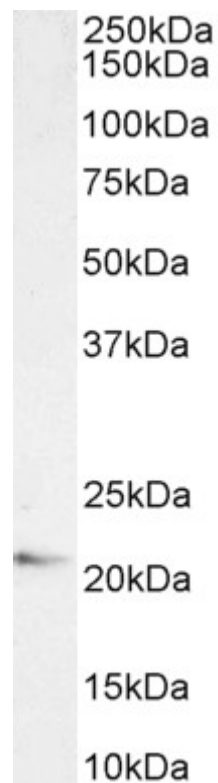
Species Reactivity

Tested: Human

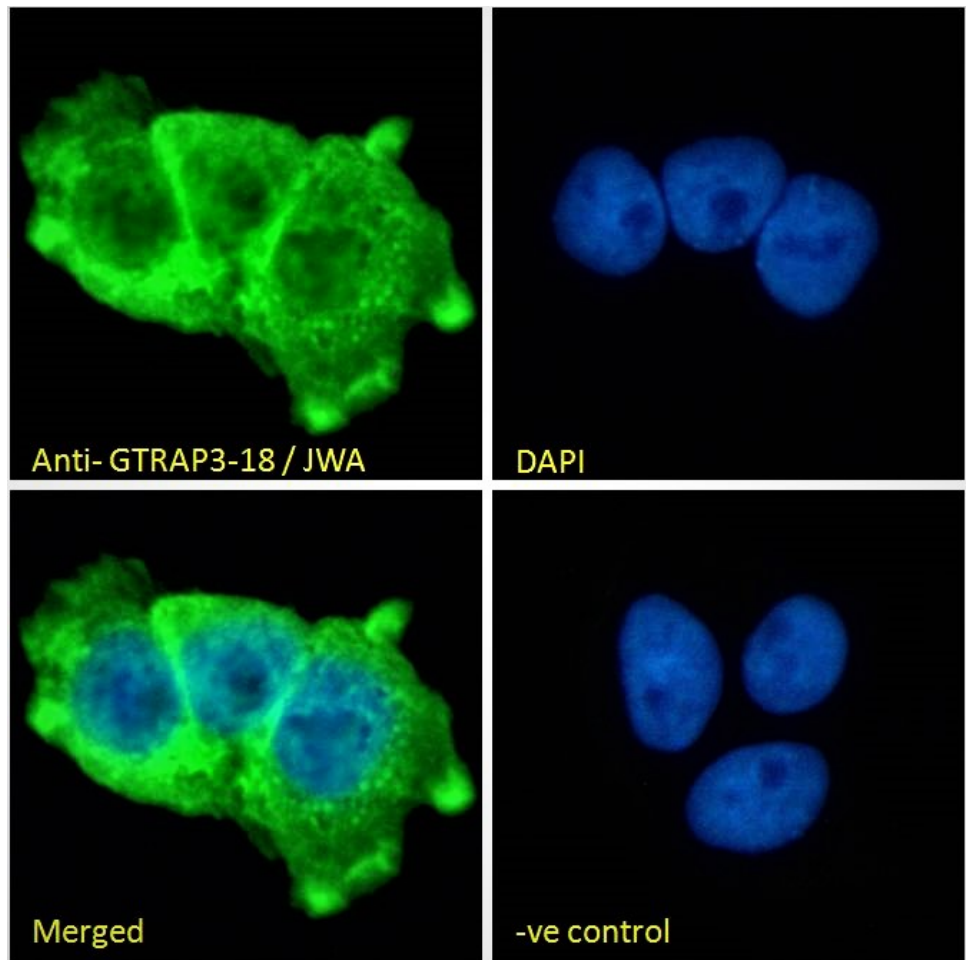
Expected from sequence similarity: Human



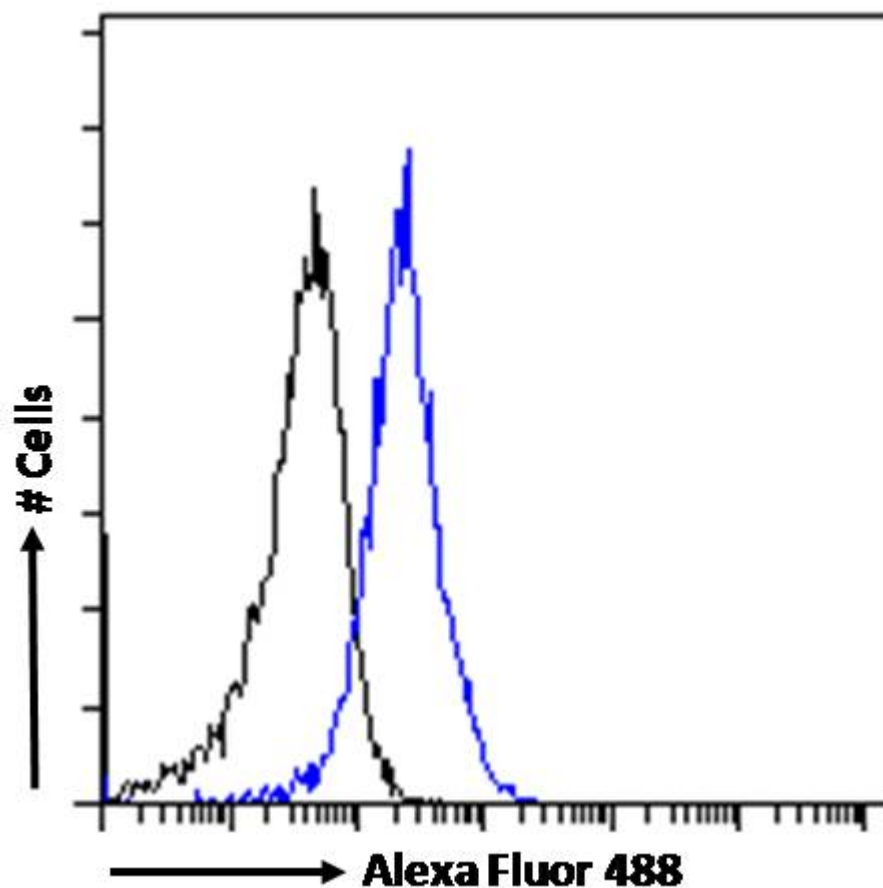
EB05631 (1ug/ml) staining of Human Cerebellum lysate (35µg protein in RIPA buffer) . Detected by chemiluminescence.



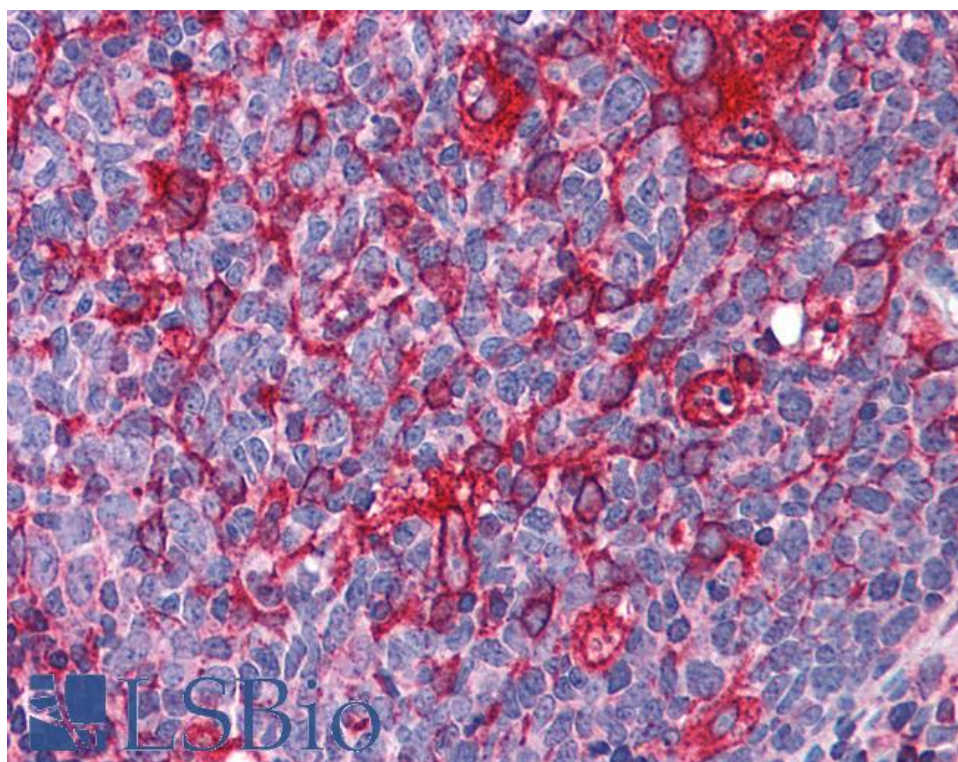
EB05631 (1ug/ml) staining of K562 cell lysate (35µg protein in RIPA buffer) . Detected by chemiluminescence.



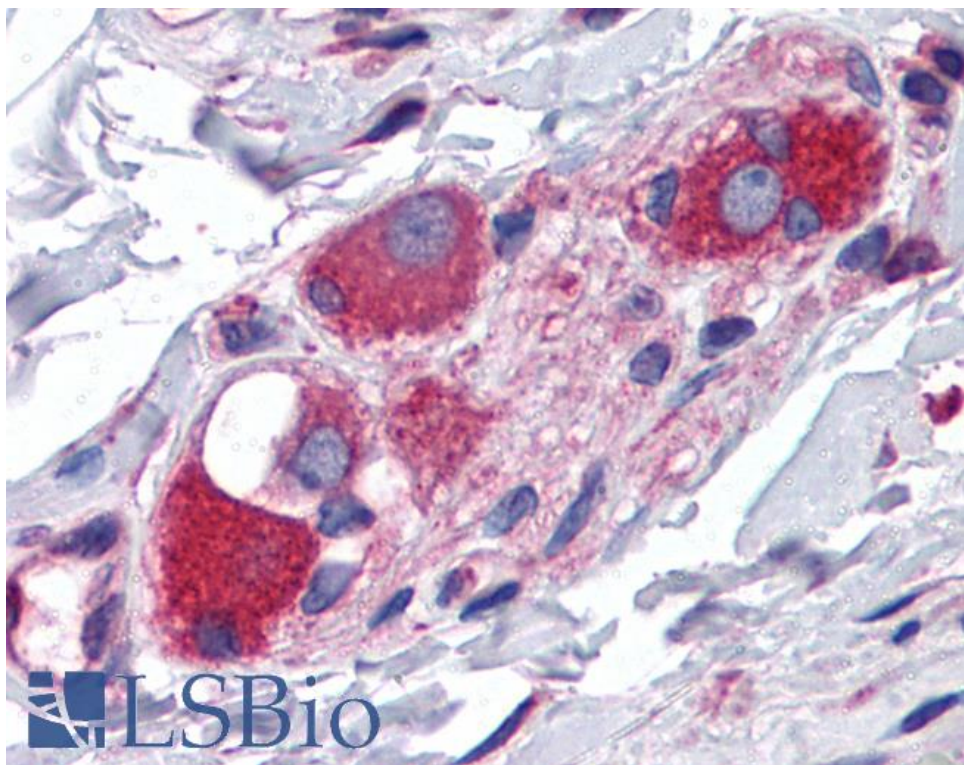
EB05631 Immunofluorescence analysis of paraformaldehyde fixed A431 cells, permeabilized with 0.15% Triton. Primary incubation 1hr (10ug/ml) followed by Alexa Fluor 488 secondary antibody (2ug/ml), showing plasma membrane and ER/cytoplasmic staining. The nuclear stain is DAPI (blue). Negative control: Unimmunized goat IgG (10ug/ml) followed by Alexa Fluor 488 secondary antibody (2ug/ml).



EB05631 Flow cytometric analysis of paraformaldehyde fixed A431 cells (blue line), permeabilized with 0.5% Triton. Primary incubation 1hr (10ug/ml) followed by Alexa Fluor 488 secondary antibody (1ug/ml). IgG control: Unimmunized goat IgG (black line) followed by Alexa Fluor 488 secondary antibody.



EB05631 (3.75µg/ml) staining of paraffin embedded Human Tonsil. Steamed antigen retrieval with citrate buffer pH 6, AP-staining.



EB05631 (3.75µg/ml) staining of paraffin embedded Human Small Intestine. Steamed antigen retrieval with citrate buffer pH 6, AP-staining.