



## International Office

### Everest Biotech Ltd

Vector Laboratories, Inc.  
6737 Mowry Ave  
Newark, CA 94560  
United States

Customer Service:

[customerservice@vectorlabs.com](mailto:customerservice@vectorlabs.com)

Technical Service:

[technical@vectorlabs.com](mailto:technical@vectorlabs.com)

Tel: +1 (800) 227-6666

[www.everestbiotech.com](http://www.everestbiotech.com)

**Research Use Only. Not for  
diagnostic or therapeutic use.**

## EB05677-T - Goat Anti-H11 / HSP22 Antibody - Trial

Size: 20µg specific antibody in 40µl



### Target Protein

**Principal Names:** HSPB8, heat shock 22kDa protein 8, CMT2L, DHMN2, E2IG1, H11, HMN2, HMN2A, HSP22, Charcot-Marie-Tooth disease, spinal, heat shock 27kDa protein 8, hereditary motor neuropathy, distal, protein kinase H11, small stress protein-like protein HSP22, spinal muscular atrophy, distal, adult, autosomal dominant, E2-induced gene 1, heat shock protein beta-8

**Official Symbol:** HSPB8

**Accession Number(s):** NP\_055180.1

**Human GenelD(s):** [26353](#)

### Immunogen

Peptide with sequence NELPQDSQEVCT, from the C Terminus of the protein sequence according to NP\_055180.1.

Please note the [peptide](#) is available for sale.

### Purification and Storage

Purified from goat serum by ammonium sulphate precipitation followed by antigen affinity chromatography using the immunizing peptide.

Supplied at 0.5 mg/ml in Tris saline, 0.02% sodium azide, pH7.3 with 0.5% bovine serum albumin.

Aliquot and store at -20°C. Minimize freezing and thawing.

### Applications Tested

**Peptide ELISA:** antibody detection limit dilution 1:32000.

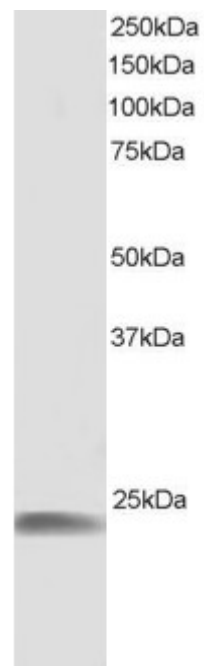
**Western blot:** Approx 20-25kDa band seen in Human Skeletal Muscle lysate [Predicted MW of approx. 22kDa according to NP\_055180]. Recommended for use at 0.5-1µg/ml. Primary incubated for 1 hour.

**IHC:** Paraffin embedded Human Adrenal Gland and Tonsil. Recommended concentration: 10µg/ml.

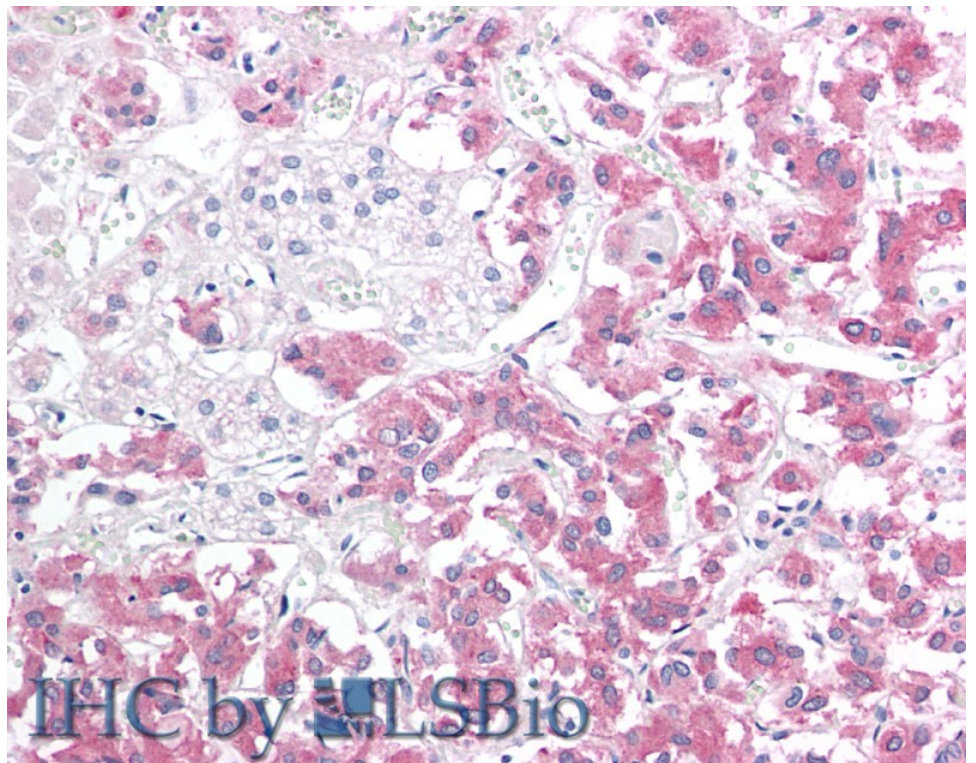
### Species Reactivity

**Tested:** Human

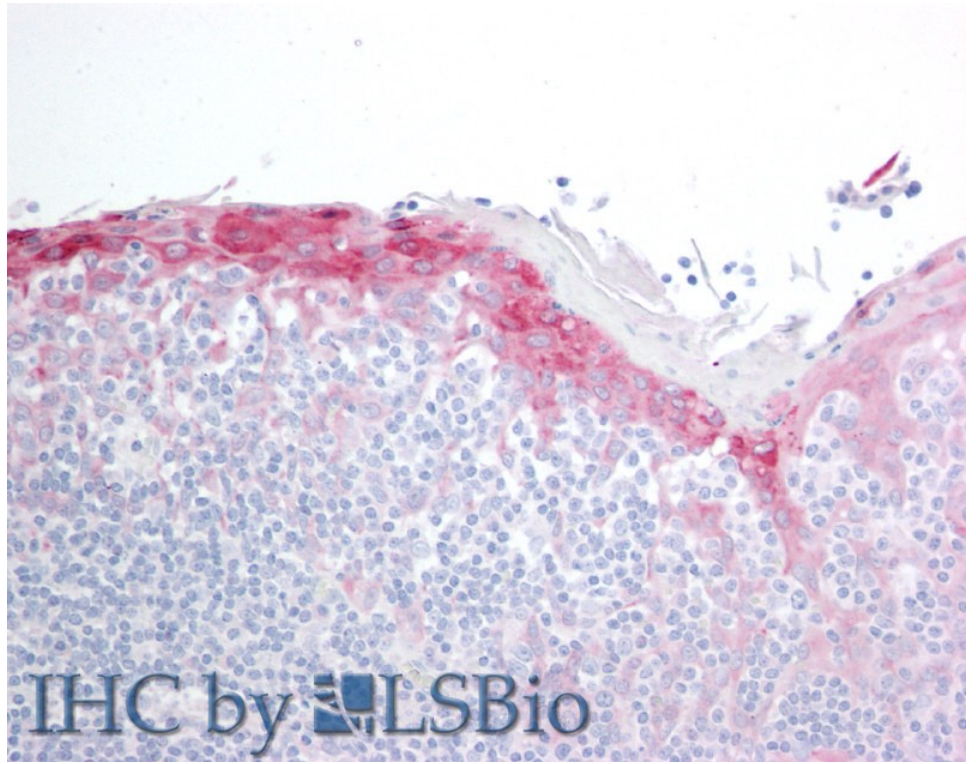
**Expected from sequence similarity:** Human



EB05677 staining (1µg/ml) of Human Muscle lysate (RIPA buffer, 30µg total protein per lane). Detected by chemiluminescence.



EB05677 (10µg/ml) staining of paraffin embedded Human Adrenal Gland. Steamed antigen retrieval with citrate buffer pH 6, AP-staining.



EB05677 (10µg/ml) staining of paraffin embedded Human Tonsil. Steamed antigen retrieval with citrate buffer pH 6, AP-staining.