



UK Office

Everest Biotech Ltd

Cherwell Innovation Centre
77 Heyford Park
Upper Heyford
Oxfordshire
OX25 5HD
UK

Enquiries:

info@everestbiotech.com

Sales:

sales@everestbiotech.com

Tech support:

support@everestbiotech.com

Tel: +44 (0)1869 238326

Fax: +44 (0)1869 238327

US Office

Everest Biotech c/o Abcore

405 Maple Street, Suite A106
Ramona,
CA 92065
USA

Inquiries:

info@everestbiotech.com

Sales:

usasales@everestbiotech.com

Tech support:

support@everestbiotech.com

Tel: 888-320-4628 (toll-free)

Fax: 888-841-9041

www.everestbiotech.com

**Research Use Only. Not for
diagnostic or therapeutic use.**

EB07221 - Goat Anti-Hamartin / TSC1 (isoform 1) Antibody

Size: 100µg specific antibody in 200µl



Target Protein

Principal Names: TSC1, hamartin, tuberous sclerosis 1, HGNC:12362, KIAA0243, LAM, MGC86987, TSC, tuberous sclerosis 1 protein, tumor suppressor

Official Symbol: TSC1

Accession Number(s): NP_000359.1

Human GeneID(s): [7248](#)

Non-Human GeneID(s): 64930 (mouse)

Important Comments: This antibody is expected to recognise isoform 1 (NP_000359.1) only.

Immunogen

Peptide with sequence C-QLHIMDYNETHHEH, from the C Terminus of the protein sequence according to NP_000359.1.

Please note the [peptide](#) is available for sale.

Purification and Storage

Purified from goat serum by ammonium sulphate precipitation followed by antigen affinity chromatography using the immunizing peptide.

Supplied at 0.5 mg/ml in Tris saline, 0.02% sodium azide, pH7.3 with 0.5% bovine serum albumin.

Aliquot and store at -20°C. Minimize freezing and thawing.

Applications Tested

Peptide ELISA: antibody detection limit dilution 1:128000.

Western blot: Approx 150kDa band observed in Human Brain lysates (calculated MW of 130kDa according to NP_000359.1). The observed molecular weight corresponds to earlier findings in literature with different antibodies (Milolozza et al Hum Mol Genet. 2000 Jul 22;9(12):1721-7; PMID: 10915759). Recommended concentration: 0.1-0.3µg/ml.

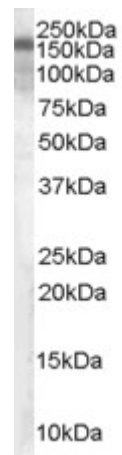
Primary incubation was 1 hour.

IHC: Paraffin embedded Human Uterus and Liver. Recommended concentration: 3.75µg/ml.

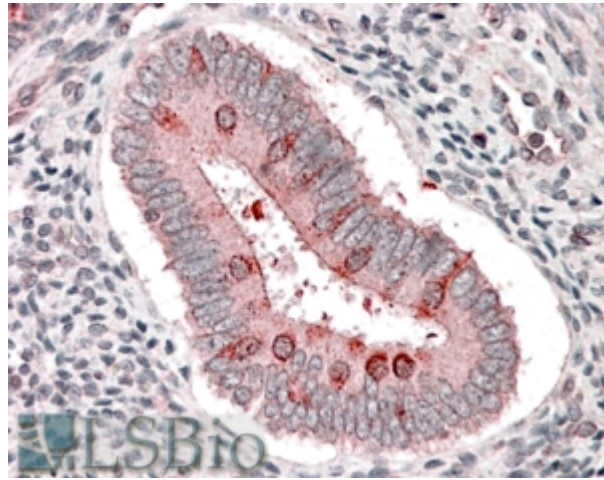
Species Reactivity

Tested: Human

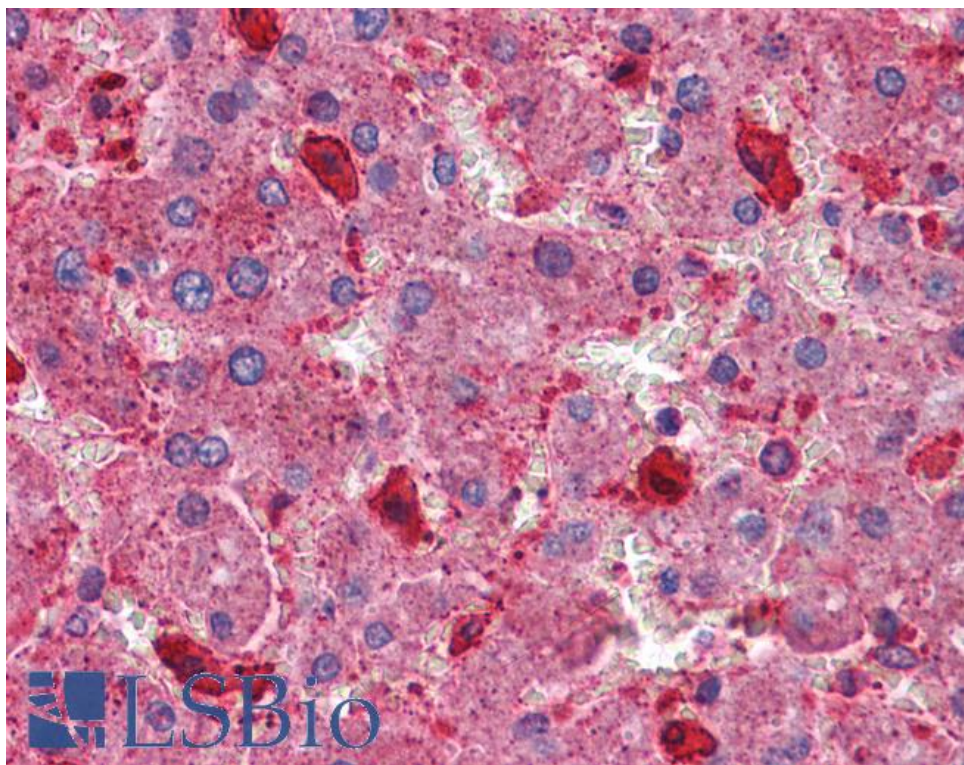
Expected from sequence similarity: Human, Mouse, Rat, Dog



EB07221 (0.1 μ g/ml) staining of Human Brain lysate (35 μ g protein in RIPA buffer). Detected by chemiluminescence.



EB07221 (3.75 μ g/ml) staining of paraffin embedded Human Uterus. Steamed antigen retrieval with citrate buffer pH 6, AP-staining.



EB07221 (3.75µg/ml) staining of paraffin embedded Human Liver. Steamed antigen retrieval with citrate buffer pH 6, AP-staining.