



UK Office

Everest Biotech Ltd

Cherwell Innovation Centre
77 Heyford Park
Upper Heyford
Oxfordshire
OX25 5HD
UK

Enquiries:

info@everestbiotech.com

Sales:

sales@everestbiotech.com

Tech support:

support@everestbiotech.com

Tel: +44 (0)1869 238326

Fax: +44 (0)1869 238327

US Office

Everest Biotech c/o Abcore

405 Maple Street, Suite A106
Ramona,
CA 92065
USA

Inquiries:

info@everestbiotech.com

Sales:

usasales@everestbiotech.com

Tech support:

support@everestbiotech.com

Tel: 888-320-4628 (toll-free)

Fax: 888-841-9041

www.everestbiotech.com

**Research Use Only. Not for
diagnostic or therapeutic use.**

EB09118 - Goat Anti-HAMP Antibody

Size: 100µg specific antibody in 200µl



Target Protein

Principal Names: HAMP, hepcidin antimicrobial peptide, HEPC, HEPCIDIN, HFE2B, LEAP-1, LEAP1, PLTR, liver-expressed antimicrobial peptide, putative liver tumor regressor

Official Symbol: HAMP

Accession Number(s): NP_066998.1

Human GeneID(s): [57817](#)

Immunogen

Peptide with sequence TSGSVFPQQTGQLAE-C, from the N Terminus (near) of the protein sequence according to NP_066998.1.

Please note the [peptide](#) is available for sale.

Purification and Storage

Purified from goat serum by ammonium sulphate precipitation followed by antigen affinity chromatography using the immunizing peptide.

Supplied at 0.5 mg/ml in Tris saline, 0.02% sodium azide, pH7.3 with 0.5% bovine serum albumin.

Aliquot and store at -20°C. Minimize freezing and thawing.

Applications Tested

Peptide ELISA: antibody detection limit dilution 1:16000.

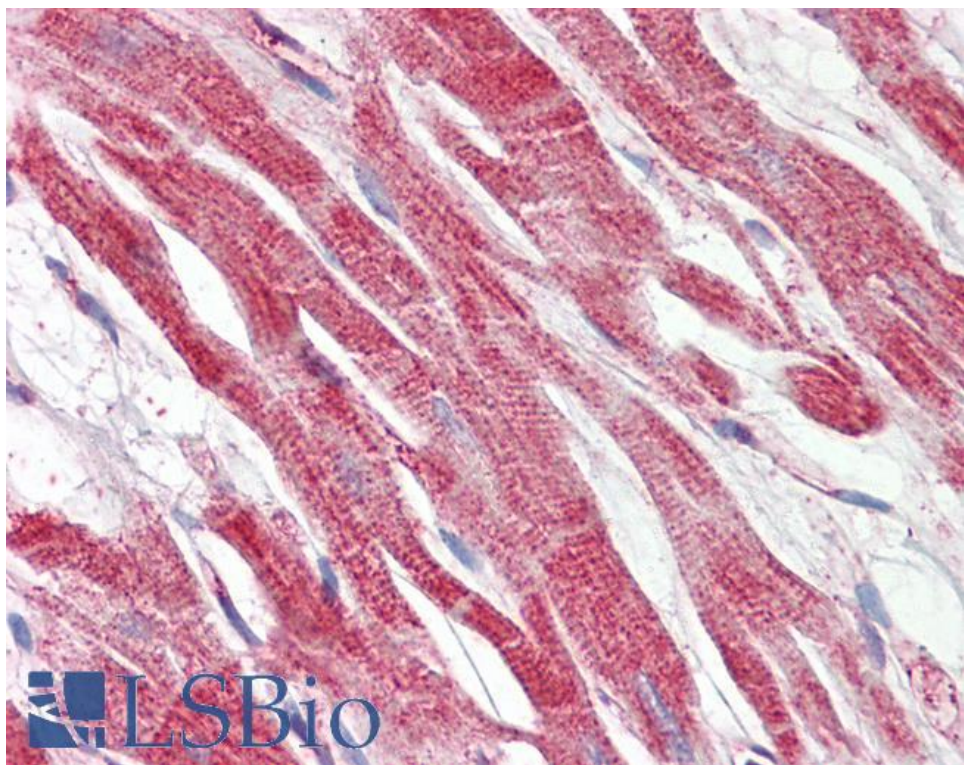
Western blot: Preliminary experiments gave an approx 28kDa band in Human Liver lysates after 0.1µg/ml antibody staining. Please note that currently we cannot find an explanation in the literature for the band we observe given the calculated size of 9.41kDa according to NP_066998.1. The 28kDa band was successfully blocked by incubation with the immunizing peptide.

IHC: Paraffin embedded Human Heart. Recommended concentration: 3.75µg/ml.

Species Reactivity

Tested: Human

Expected from sequence similarity: Human



EB09118 (3.75µg/ml) staining of paraffin embedded Human Heart. Steamed antigen retrieval with citrate buffer Ph 6, AP-staining.