

## UK Office

### Everest Biotech Ltd

Cherwell Innovation Centre  
77 Heyford Park  
Upper Heyford  
Oxfordshire  
OX25 5HD  
UK

Enquiries:

[info@everestbiotech.com](mailto:info@everestbiotech.com)

Sales:

[sales@everestbiotech.com](mailto:sales@everestbiotech.com)

Tech support:

[support@everestbiotech.com](mailto:support@everestbiotech.com)

Tel: +44 (0)1869 238326

[www.everestbiotech.com](http://www.everestbiotech.com)

**Research Use Only. Not for  
diagnostic or therapeutic use.**

## EB09160 - Goat Anti-HAX1 Antibody

Size: 100µg specific antibody in 200µl



### Target Protein

**Principal Names:** HAX1, HCLS1 associated protein X-1, FLJ17042, FLJ18492, FLJ93803, HCLSBP1, HS1BP1, SCN3, HCLS1 (and PKD2) associated protein, HS1 binding protein, OTTHUMP00000034190

**Official Symbol:** HAX1

**Accession Number(s):** NP\_006109.2; NP\_001018238.1

**Human GeneID(s):** [10456](#)

**Important Comments:** This antibody is expected to recognize both reported isoforms (NP\_006109.2 and NP\_001018238.1).

### Immunogen

Peptide with sequence C-TRHEADSSPRGDPEES, from the internal region of the protein sequence according to NP\_006109.2; NP\_001018238.1.

Please note the [peptide](#) is available for sale.

### Purification and Storage

Purified from goat serum by ammonium sulphate precipitation followed by antigen affinity chromatography using the immunizing peptide.

Supplied at 0.5 mg/ml in Tris saline, 0.02% sodium azide, pH7.3 with 0.5% bovine serum albumin.

Aliquot and store at -20°C. Minimize freezing and thawing.

### Applications Tested

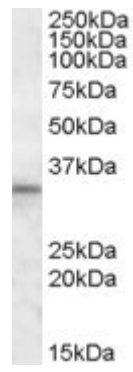
**Peptide ELISA:** antibody detection limit dilution 1:2000.

**Western blot:** Approx 33kDa band observed in Human Kidney, Liver and Testis lysates (calculated MW of 31.6kDa according to NP\_006109.2). Recommended concentration: 1-3µg/ml.

### Species Reactivity

**Tested:** Human

**Expected from sequence similarity:** Human



EB09160 (1µg/ml) staining of Human Testis lysate (35µg protein in RIPA buffer). Primary incubation was 1 hour.  
Detected by chemiluminescence.