

## UK Office

### Everest Biotech Ltd

Cherwell Innovation Centre  
77 Heyford Park  
Upper Heyford  
Oxfordshire  
OX25 5HD  
UK

Enquiries:

[info@everestbiotech.com](mailto:info@everestbiotech.com)

Sales:

[sales@everestbiotech.com](mailto:sales@everestbiotech.com)

Tech support:

[support@everestbiotech.com](mailto:support@everestbiotech.com)

Tel: +44 (0)1869 238326

[www.everestbiotech.com](http://www.everestbiotech.com)

**Research Use Only. Not for  
diagnostic or therapeutic use.**

## EB10176 - Goat Anti-HCN3 Antibody

Size: 100µg specific antibody in 200µl



### Target Protein

**Principal Names:** hyperpolarization activated cyclic nucleotide-gated potassium channel 3, KIAA1535, MGC131493, potassium/sodium hyperpolarization-activated cyclic nucleotide-gated channel 3, HCN3

**Official Symbol:** HCN3

**Accession Number(s):** NP\_065948.1

**Human GeneID(s):** [57657](#)

**Non-Human GeneID(s):** 15168 (mouse)

### Immunogen

Peptide with sequence C-RGVRGRAPSTGAQ, from the internal region of the protein sequence according to NP\_065948.1.

Please note the [peptide](#) is available for sale.

### Purification and Storage

Purified from goat serum by ammonium sulphate precipitation followed by antigen affinity chromatography using the immunizing peptide.

Supplied at 0.5 mg/ml in Tris saline, 0.02% sodium azide, pH7.3 with 0.5% bovine serum albumin.

Aliquot and store at -20°C. Minimize freezing and thawing.

### Applications Tested

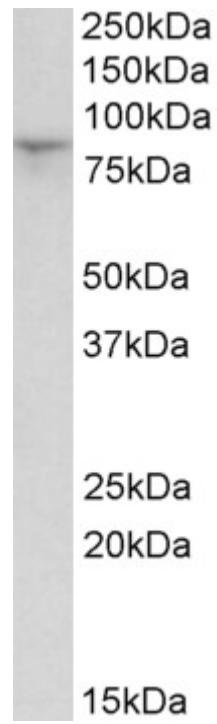
**Peptide ELISA:** antibody detection limit dilution 1:32000.

**Western blot:** Approx 85kDa band observed in Rat Kidney lysates (calculated MW of 86.0kDa according to Human NP\_065948.1 and 86.8kDa according to Rat NP\_446137.1).  
Recommended concentration: 1-3µg/ml.

### Species Reactivity

**Tested:** Rat

**Expected from sequence similarity:** Human, Mouse, Rat, Dog, Cow



EB10176 (1 $\mu$ g/ml) staining of Rat Kidney lysate (35 $\mu$ g protein in RIPA buffer). Primary incubation was 1 hour.  
Detected by chemiluminescence.