



## International Office

### Everest Biotech Ltd

Vector Laboratories, Inc.  
6737 Mowry Ave  
Newark, CA 94560  
United States

Customer Service:

[customerservice@vectorlabs.com](mailto:customerservice@vectorlabs.com)

Technical Service:

[technical@vectorlabs.com](mailto:technical@vectorlabs.com)

Tel: +1 (800) 227-6666

[www.everestbiotech.com](http://www.everestbiotech.com)

**Research Use Only. Not for  
diagnostic or therapeutic use.**

## EB12826 - Goat Anti-HDGFRP3 (aa89-103) Antibody

Size: 100µg specific antibody in 200µl



### Target Protein

**Principal Names:** HDGFRP3, HDGF-2, HDGF2, HRP-3, hepatoma-derived growth factor 2, hepatoma-derived growth factor-related protein 3

**Official Symbol:** HDGFRP3

**Accession Number(s):** NP\_057157.1

**Human GeneID(s):** [50810](#)

### Immunogen

Peptide with sequence C-ENNPGVKFTGYQAIQ, from the internal region of the protein sequence according to NP\_057157.1.

Please note the [peptide](#) is available for sale.

### Purification and Storage

Purified from goat serum by ammonium sulphate precipitation followed by antigen affinity chromatography using the immunizing peptide.

Supplied at 0.5 mg/ml in Tris saline, 0.02% sodium azide, pH7.3 with 0.5% bovine serum albumin.

Aliquot and store at -20°C. Minimize freezing and thawing.

### Applications Tested

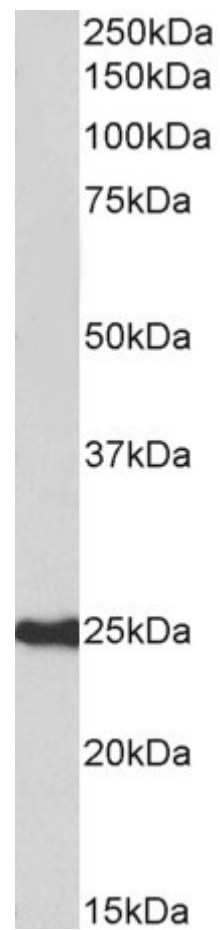
**Peptide ELISA:** antibody detection limit dilution 1:128000.

**Western blot:** Approx 25kDa band observed in Human Brain (Amygdala) lysates (calculated MW of 22.6kDa according to NP\_057157.1). Recommended concentration: 0.3-1µg/ml.

### Species Reactivity

**Tested:** Human

**Expected from sequence similarity:** Human, Dog, Cow



EB12826 (0.3 $\mu$ g/ml) staining of Human Amygdala lysate (35 $\mu$ g protein in RIPA buffer). Primary incubation was 1 hour. Detected by chemiluminescence.